



ROBINSONS LAND
CORPORATION



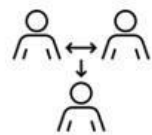
Health: The People's First and Foremost Agenda in the Private Sector

We are the real estate arm of JG Summit Holdings, Inc.

WHO WE ARE?



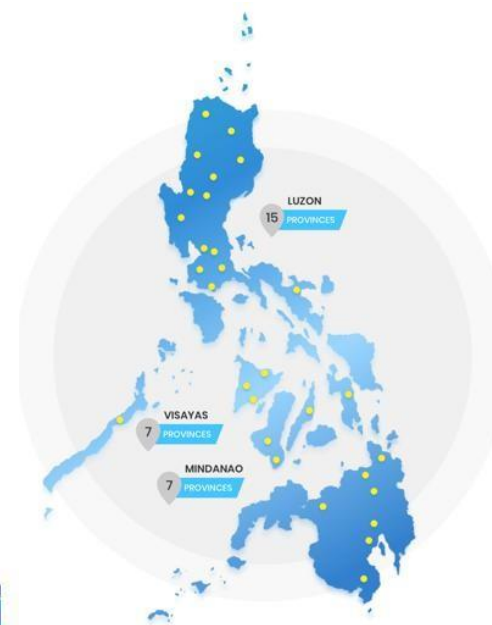
2,468



5,907



Diversified portfolio: 19 mixed use developments, 25 offices, 5 flexible working centers, 52 malls, 20 hotels & 4 industrial facilities



Commercial Centers



Residential



Office Buildings



Hotels and Resorts



Industrial and Integrated Developments

RLC has a wide geographical reach as far north as Ilocos and as far south as South Cotabato

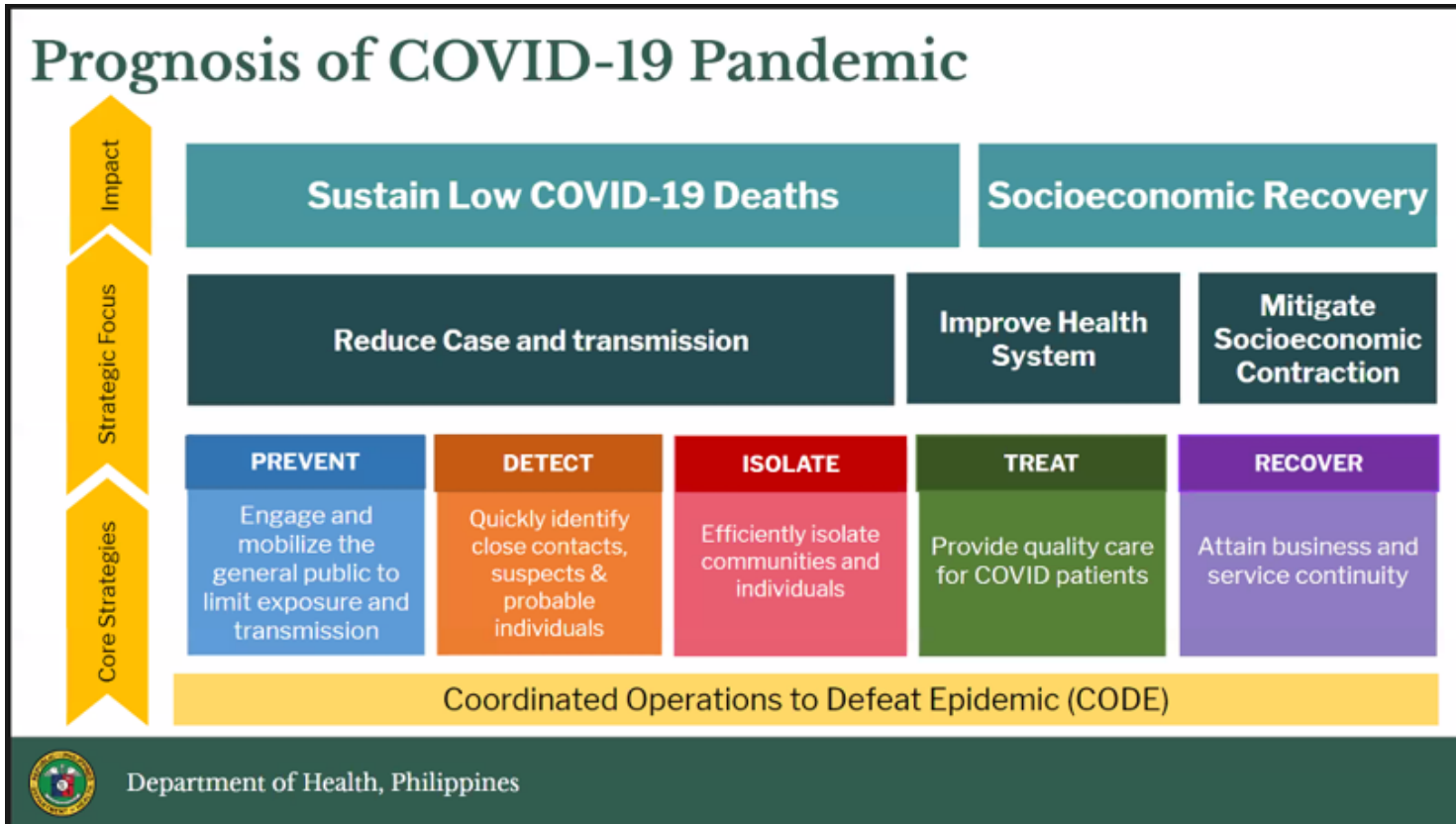
Challenges came that tested our resiliency

- **Filipino livelihood vastly affected by COVID – 19**
 - 8.7 million workers lost their jobs; 17.6% unemployment rate
 - Total household wage and income loss of around PHP 1.04 trillion in 2020; average of PHP 23,806 per worker.
- **Lower consumption and investment** due to lower demand in sectors that require social distancing (e.g., amusement, tourism, restaurants)
 - Social distancing rule
 - Lower business and consumer confidence
 - Rules keeping children at home
- **Workers' productivity will be lower** due to death, illness, and lack of schooling.

Source: NEDA, Karl Kendrick Chua

[Our response related to health will contribute to recovery of the business.](#)

Health agenda at the workplace in the new normal



- Increase mental and physical resilience
- Stop transmission
- Reduce contact rate
- Shorten duration of infectiousness

Source: DOH Workplace Prevention & Control of COVID

With our COVID-19 protocols and procedures in place, we move forward with our immunization response, in support of the government's efforts to defeat the virus

Prioritization

We are on our way towards vaccine site prioritization for the first two waves of administration

Basis for Vaccination Site Prioritization include DOH Prioritization by Region and by Sector, and Headcount (Higher headcount is first)

Administration

By Geography

By Sector/
Category

By Headcount

Administration

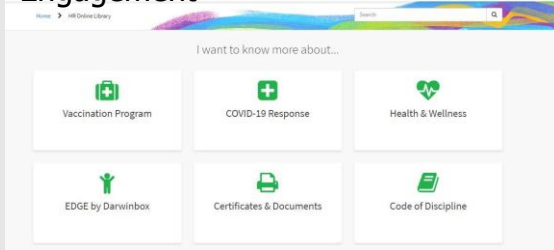


RLC Vaccination status todate

	Organic	Third Party
Head Office	94%	96%
NCR	94%	88%
Nationwide	85%	55%

Programs to increase physical and mental resilience

Information Dissemination & Engagement



Go Rewards ROBINSONS LAND CORPORATION

Go, get vaxxed!
And get a chance to win Go Rewards points!*

- 1 Winner of 25,000 Go Rewards points
- 3 Winners of 10,000 Go Rewards points
- Weekly draws: 3 winners of 5,000 Go Rewards points per draw

*1 point = 1 peso

Promo period: August 9 to November 5, 2021

Shop. Earn. Save
Use Go Rewards points to pay for groceries, medicine, home essentials and more!
Download the app now

gorewards.com.ph

Telemedicine & Health App

COVID CARE AT THE GOKONGWEI GROUP
COVID CARE AT YOUR FINGERTIPS
A 4-STEP PROCESS

- 1** IF SYMPTOMATIC, EMPLOYEE SENDS A TEXT OR VIBER MESSAGE
TEXT - 0919 0691874
VIBER - 0919 0691879
- 2** MESSAGE:
• FULL NAME
• EMPLOYEE ID #
• BUSINESS UNIT
• MOBILE NUMBER
- 3** TELEMED NURSE WILL CALL EMPLOYEE TO VERIFY AND ENDORSE TO MEDICAL DOCTOR FOR ASSESSMENT
- 4** TELEMED DOCTOR WILL CALL EMPLOYEE FOR THE MEDICAL ASSESSMENT

Reset. Enable. Transform.
#WeShallRiseAgainPh

JG Health App
Daily Health Monitoring App for JGS Employees

Installation guide for iOS and Android

iOS ANDROID

Reset. Enable. Transform.
#WeShallRiseAgainPh

Mental Health Support

infinite care | ROBINSONS LAND CORPORATION

Hello Prynness Hyacinth

AVAILABLE SESSIONS
You have 1 session available for booking.

Book a session
Chat with us

UPCOMING SESSIONS
You have no upcoming sessions

Recommended for you

- 4 Ways to Cope with Social Isolation**
Social isolation is not just being unable to connect to friends and family in person or a...
5 mins Start reading
- Dealing with Pandemic Stress and Anxiety**
The world has led us to be stuck at home and away from our normal lives and it is becomin...
5 mins Start reading
- Let's Talk About Burnout**
Most people don't like to talk about it, but everyone experiences burnout. If you are un...
5 mins Start reading

- **Info Session Webinars:** Mental Health 101, Managing Stress and Anxiety in the Workplace, Practicing Mindfulness, Providing Psychological First Aid, Building Mental Resilience
- **Counselling sessions**
- **Chat helpline** for all employees
- **Booking app**

Dwell: Our total well-being framework



PHYSICAL

Promoting healthy lifestyle, balancing work and leisure time in order to obtain energy to keep-up with work demands.



EMOTIONAL

A culture of “malasakit” and trust



MENTAL

Having the right mindset to develop knowledge, skills, and resilience to adversities.



SPIRITUAL

Giving importance to our values and beliefs, deepening our sense of purpose and meaning in life



Relevance through the pandemic



- 27 **vaccination sites** all over the country
- **Comelec Satellite Registration**
#MagparehistroKa2021 in 47 branches nationwide
- **Phil. Identification System (Philsys) registration** in 36 branches nationwide, registering 50M to 70M Filipinos by the end of 2021



- **Temporary Offsite Passport Services (TOPS)**

- Awarded **Safety Seal certificate** confirming the establishment is safe to the public



- Satellite office for **SSS, Department of Foreign Affairs, NBI, LTO, Pag-IBIG, Philhealth, PRC.**
- Robinsons Magnolia provides **delivery riders' lounge**



- Selected hotels used as **isolation facilities** under the government's Oplan Kalinga



PEOPLE

These Hotel Heroes Embody the Meaning of True Hospitality

- Hotels provided **free rooms** for medical frontliners



Robinsons Land President & CEO Frederick D. Go and GBF Executive Director Grace Colet present a donation of computers to Pasig City Mayor Vico Sotto and City Administrator Atty. Jeronimo U. Manzanero.



Partnership with Phil. Red Cross to service thousands of Filipinos with a fast and cheaper way to test for Covid-19.

Responsible growth...

ESG Policies & Strategies

Environment

- LEED (Leadership in Energy and Environmental Design) / BERDE (Building for Ecologically Responsive Design Excellence) certification for all new Metro Manila buildings



Tera Tower



Exxa-Zeta Tower

- Use of environment friendly and energy efficient features such as 1) LED lights to reduce power consumption 2) double-glazed glass façade which reduce the need for cooling 3) variable refrigerant air conditioning system



Robinsons Malls reducing its carbon footprint and making significant contribution to clean energy initiatives.

Social

- Employment opportunities and community development where we have presence especially in the provinces
- In 2020, RLC started its own foundation, Robinsons Land Foundation, Inc ("RLF") for disaster response, community development and social involvement, health and nutrition, and child welfare and education



Robinsons Land Foundation donates bottled water to PGH



Robinsons Place Manila packs relief for ultra poor families in Bacolod City

- **Equality** – inclusion in Bloomberg Gender Equality Index



RISE initiative inspire and mentor female leaders in Crowne Plaza & Holiday Inn Manila Galleria

- **COVID 19** – employees received health kits, food packs and covid incentives for reporting to work during ECQ, RLC assisted the government to host 29 vaccination sites nationwide

Governance

- Transparency, compliance, and adherence to the highest standard of governance
- Conformance to SEC Corporate Governance Code

As we end...

Caring for the overall health



RLC has put in place measures that foster a culture of health

THANK YOU

Prynness Hyacinth P. Esguerra



Prynnesshyacinth.Esguerra@ihg.com



0998 840 4977