



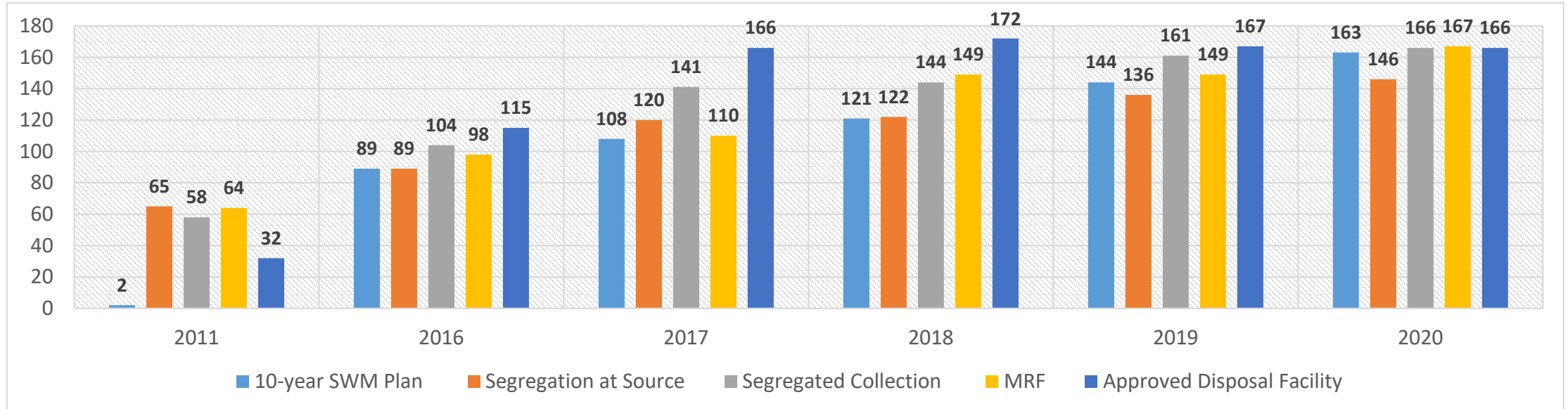
Insights on “Analysis of Regulatory Policies on Solid Waste Management in the Philippines”



EFFORTS AND INITIATIVES ON SOLID WASTE MANAGEMENT

TRENDS OF LGU COMPLIANCE TO RA NO. 9003

MANILA BAY AREA



Approval of 10 Year
SWMP Plan



Segregated Collection



Residual Disposed in Approved
Facilities



Segregation at Source



Establishment of MRF





Empowering our Barangay as Frontliners

- **Orientation of barangay officials** on the importance of the waste management for the Manila Bay Rehabilitation Program;
- Seminar on **Achieving Improved Performance/ Compliance on Solid Waste Management Policies** for barangay officials; and
- Issuance of **DILG MC 2019-112 “Organization or Reorganization of the Barangay Ecological Solid Waste Management Committee (BESWMC)”** which aims to inform and remind the BESWMC of their functions and responsibilities.

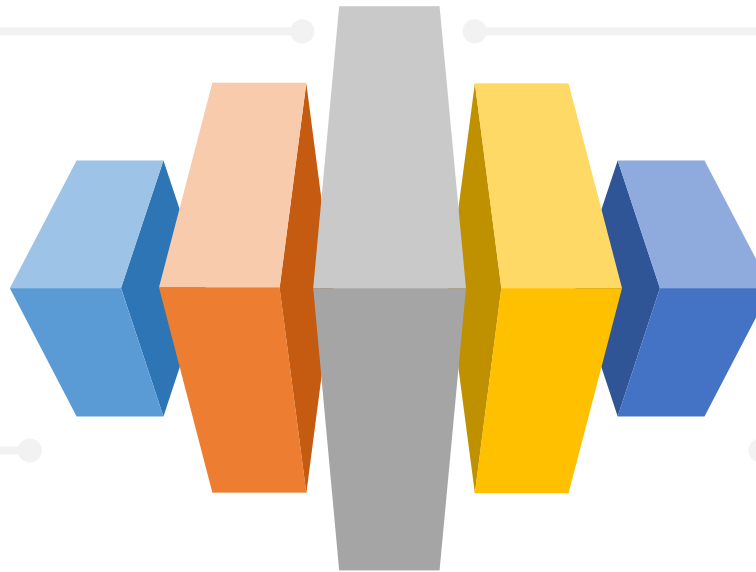
Collaboration with Stakeholders for Stronger Waste Management Systems

Project IWASTO

Part of the IM4ManilaBay Program developed by the University of the Philippines – Institute of Civil Engineering. IWASTO aims to assess the SWM activities in Manila Bay Area.

Healthy Oceans & Clean Cities Initiative (HOCCI)

Initiated by UN-HABITAT which aims to reduce marine plastic pollution, and address fundamental issues of plastic waste leakages to the marine environment in six (6) partner cities.



Study on “Plastic Pollution Awareness” along Manila Bay

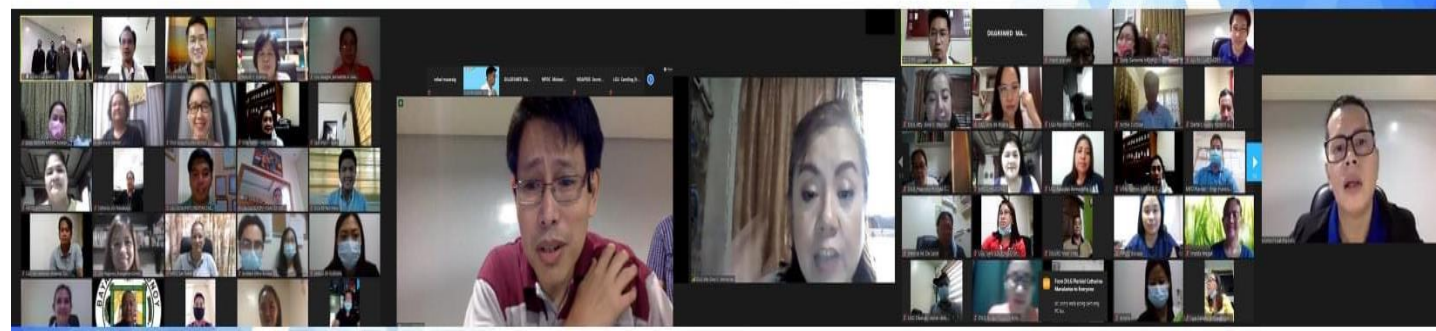
EcoWaste Coalition spearheaded the conduct of four (4) studies on the above-stated topic. This Department actively participated in the research presentation wherein the results of the study was discussed.

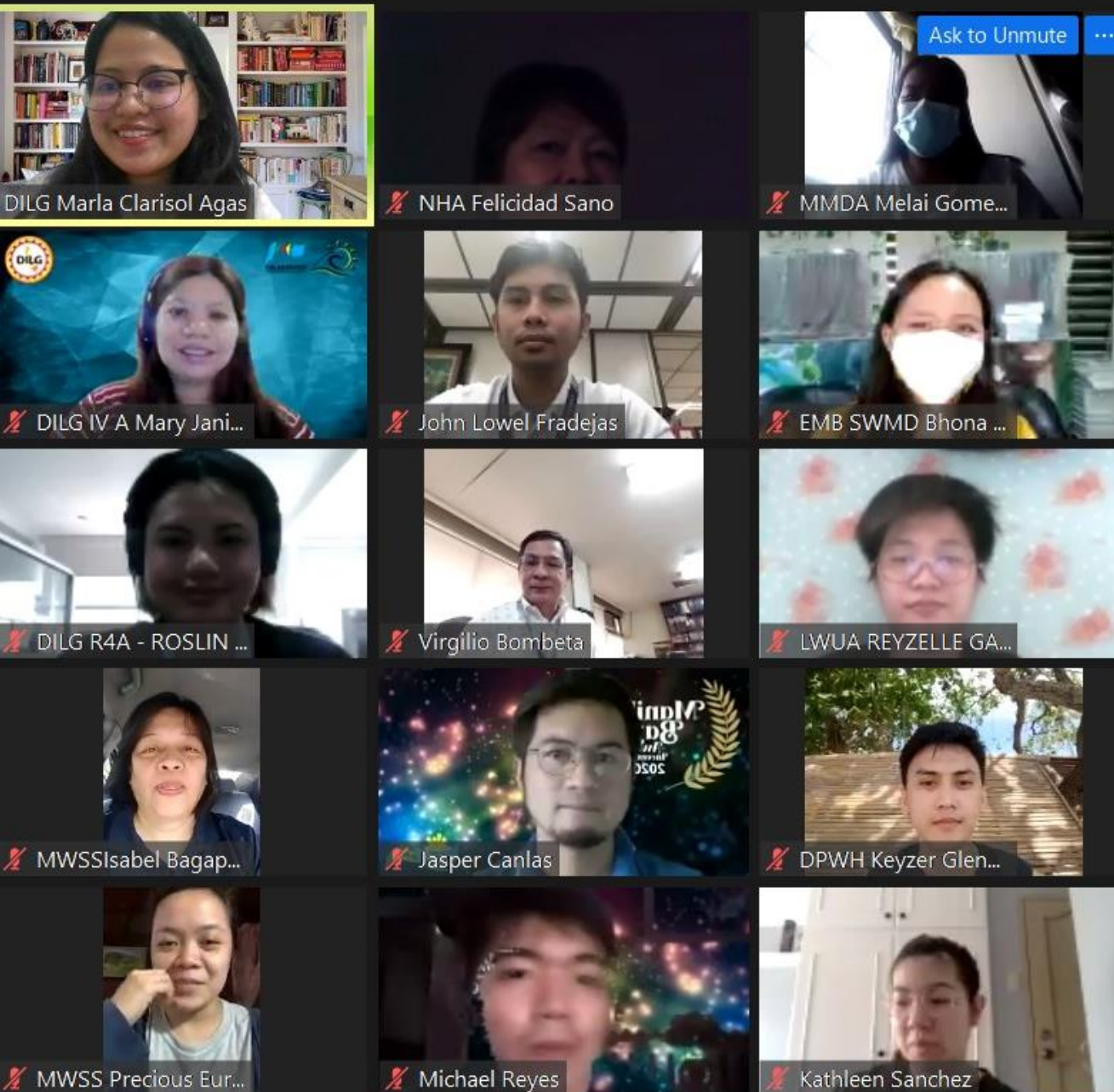
Study on Extended Producer Responsibility (EPR) Scheme for Plastic Packaging

An evidence – based study on post – consumer plastic packaging waste to understand the current state of plastic packaging recycling in the Philippines. The Department actively participated in the online stakeholder consultation for the finalization of the study.

Provision of Capacity Development

- Technical Assistance (workshops and coaching sessions) to LGUs on the drafting of their **10-Year SWM Plans**
- Assistance on the conduct of LGUs' **Waste Analysis and Characterization Study (WACS)**, a major component needed for the drafting of the 10-Year SWM Plan;
- Orientation on **Alternative Composting Technologies**





Assessment of LGU Compliance to RA No. 9003

Conduct of audits such as **LGU Compliance Assessment, and Manila BAYani Awards and Incentives (MBAI)**.

This assess the compliance and performance of LGUs' relative to environmental laws the support the program. Non-compliant LGUs are further validated to understand challenges and gaps in the implementation, while top-performing LGUs are recognized and provided with cash incentives.

1st

**Municipality of
Baliwag**

Bulacan, Region III



2nd

**Municipality of
Magallanes**

Cavite, Region IV-A



**2019 MBAI NATIONAL
AWARDEES**

Municipal Category



 <https://web.facebook.com/DILG.ManilaBayPMO/>

1st

City of Imus

Cavite, Region IV-A



2nd

City of Makati

Metro Manila, NCR



3rd

City of Balanga

Bataan, Region III



**2019 MBAI NATIONAL
AWARDEES**

City Category



 <https://web.facebook.com/DILG.ManilaBayPMO/>

Management of COVID-19 Related Health Care Wastes for LGUs

In support to NSWMC Resolution No. 1364, the Department issued its MC No. 2020-143 which provides the local governments' roles in the management of COVID-19 related health care wastes.

Last March 2021, the Department participated in the Capability Building on the Management of COVID-19 Related Health Care Wastes for LGUs spearhead by DENR.



Ways Forward

Prioritization of capacity building initiatives

Continuous implementation and enhancement of audit tools

Partnership with various agencies on the updating of local development plans consistent with current laws

Review of the local policies and its congruence with national laws

Strengthening BESWMC and Barangay Roles and Functions on Solid Waste Management

Linking LGUs with finance groups

Crafting of the DILG Action Plan on Solid Waste

