

SIMULATING THE IMPACTS OF COVID-19 ON POVERTY  
AND INCOME DISTRIBUTION IN THE PHILIPPINES

# RESPONSE

---

Asec. Joseline P. Niwane  
Policy and Plans



# DSWD

Department of Social Welfare and Development

## MISSION

---

To lead in the formulation, implementation, and coordination of social welfare and development policies and programs for and with the poor, vulnerable, and disadvantaged.

## VISION

---

The Department of Social Welfare and Development envisions all Filipinos free from hunger and poverty, have equal access to opportunities, enabled by a fair, just, and peaceful society.



# On Various Income Contraction Scenarios

Government efforts shall provide social protection not only for the poor but also for segments

Number and % of Non-Pantawid low income families served by Region

Region	Actual Served	Target	%
IV-A	1,928,125	1,944,919	99.1%
NCR	1,558,115	1,558,615	100.0%
III	1,504,018	1,515,847	99.2%
VI	1,130,236	1,153,784	98.0%
VII	1,024,367	1,058,075	96.8%
I	777,375	793,405	98.0%
V	772,287	772,287	100.0%
XI	685,547	685,547	100.0%
XII	666,406	668,287	99.7%
X	626,251	628,243	99.7%
II	570,360	584,258	97.6%
VIII	551,185	596,094	92.5%
IX	400,158	403,185	99.2%
IV-B	395,077	416,246	94.9%
XIII	305,096	305,096	100.0%
CAR	236,106	255,676	92.3%
BARMM	174,838	180,979	96.6%

# On Various Income Contraction Scenarios

## Levels of Satisfaction on SAP 1st Tranche by Region

Region	Satisfied with the Quantity Received	Satisfied on the Timeliness	Absence of Issues on SAP	Average
CENTRAL VISAYAS [REGION 7]	89%	92%	93%	92%
CENTRAL LUZON [REGION 3]	91%	91%	87%	90%
EASTERN VISAYAS [REGION 8]	88%	94%	87%	90%
NORTHERN MINDANAO [REGION 10]	87%	90%	92%	90%
DAVAO [REGION 11]	88%	90%	90%	89%
CORDILLERA [CAR]	87%	89%	88%	88%
CALABARZON [REGION 4A]	85%	85%	88%	86%
ZAMBOANGA PENINSULA [REGION 9]	87%	92%	76%	85%
WESTERN VISAYAS [REGION 6]	85%	90%	77%	84%
BICOL [REGION 5]	85%	85%	82%	84%
SOCSEKARGEN [REGION 12]	83%	82%	86%	84%
MUSLIM MINDANAO [BARMM]	91%	94%	64%	83%
NATIONAL CAPITAL [METRO MANILA]	95%	85%	64%	81%
CARAGA [REGION 13]	79%	82%	82%	81%
CAGAYAN VALLEY [REGION 2]	80%	87%	76%	81%
SOUTHWESTERN TAGALOG [REGION 4B]	66%	84%	91%	80%
ILOCOS [REGION 1]	76%	78%	59%	71%

*SAP Post Distribution Monitoring Report: Economic and Food Security  
Implications of the COVID-19 Pandemic*



**FOR HOUSEHOLDS  
THAT RECEIVED CASH  
ASSISTANCE, MOST OF  
THEM USED THE  
MONEY PRIMARILY TO  
BUY FOOD.**



**DSWD**  
Department of Social Welfare and Development



**World Food  
Programme**

# ON VARIOUS INCOME CONTRACTION SCENARIOS



## Planning

There is a need to re-calibrate the social protection programs and strategize for the middle to worst case scenarios on income contractions



## Partnership

Improve the collaboration among the national and local government



## Data

The availability, timeliness and credibility of disaggregated regional data are important

# ON MEASURING POVERTY

Policy and data issues and poverty measurement system as well as the poverty line setting methodology need to be addressed

Poverty statistics based on consumption expenditure could generate relevant information for government policy and program development

NEDA, PSA and PIDS should collaborate on studying consumption expenditures as an alternative measure of poverty

We look forward to an interoperable poverty database because improved poverty registry is vital for the DSWD

# ON OTHER POLICY IMPLICATIONS AND WAYS FORWARD

## *"Leave No One Behind"*

---

Further analysis on the impact of the pandemic on the different vulnerable groups is crucial as basis for government interventions intended to assist specific groups of people

## *COVID-19 related engagements*

---

Assessment of the responsiveness and service delivery of the LGUs and DSWD on violence against women and children amidst the community quarantine due to the pandemic

Strategic planning of the management of returning Filipinos as the lead of the Inter-Agency Task Group Western Mindanao – Management of Returning Filipinos (IATGWM-MREFs)



# ON OTHER POLICY IMPLICATIONS AND WAYS FORWARD

## *Digitalization of the Government*

---

DSWD capitalized on the use of Payment System Providers (PSP) or Electronic Payment and Collection System Providers (EPCSs) in the implementation of the second tranche of SAP

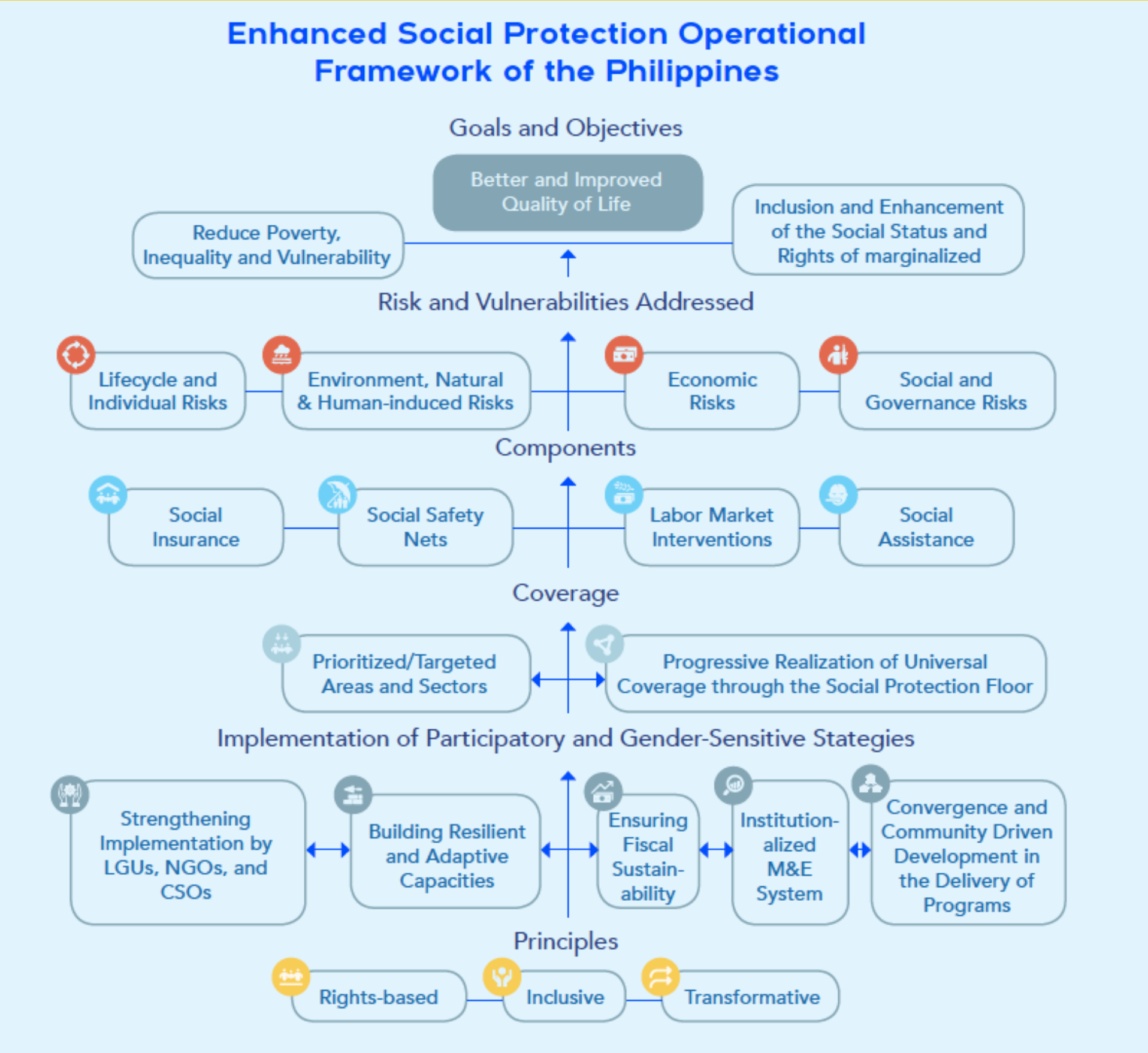


ROBINSONSBANK





# ON OTHER POLICY IMPLICATIONS AND WAYS FORWARD



## *Operationalization of Social Protection*

Social protection should be at the core of government policies whether there is pandemic or not

## *Universal Social Protection*

The social protection floor for the Philippines should be developed to achieve the progressive universal social protection

”

**REST ASSURED THAT THE  
DSWD WILL BE AT THE  
FOREFRONT IN SERVING THE  
POOR, VULNERABLE AND  
DISADVANTAGED.**

