



Primary Health Care for Non-Communicable Diseases

MARIA ROSARIO SYLVIA UY, MD, DPPS
NCD Sub-Group Lead



Reactions/Comments

- Lack of gatekeeping
- Limited spending on primary care at the local level; inequitable grants from national to local
- Disease-oriented; programmatic; vertical
- Scarcity of primary care facility
- Stock outs common
- Paper-based medical record system
- Monitoring and evaluation of NCD services is weak



REPUBLIC ACT (RA) 11223

“Universal Health Care Act”

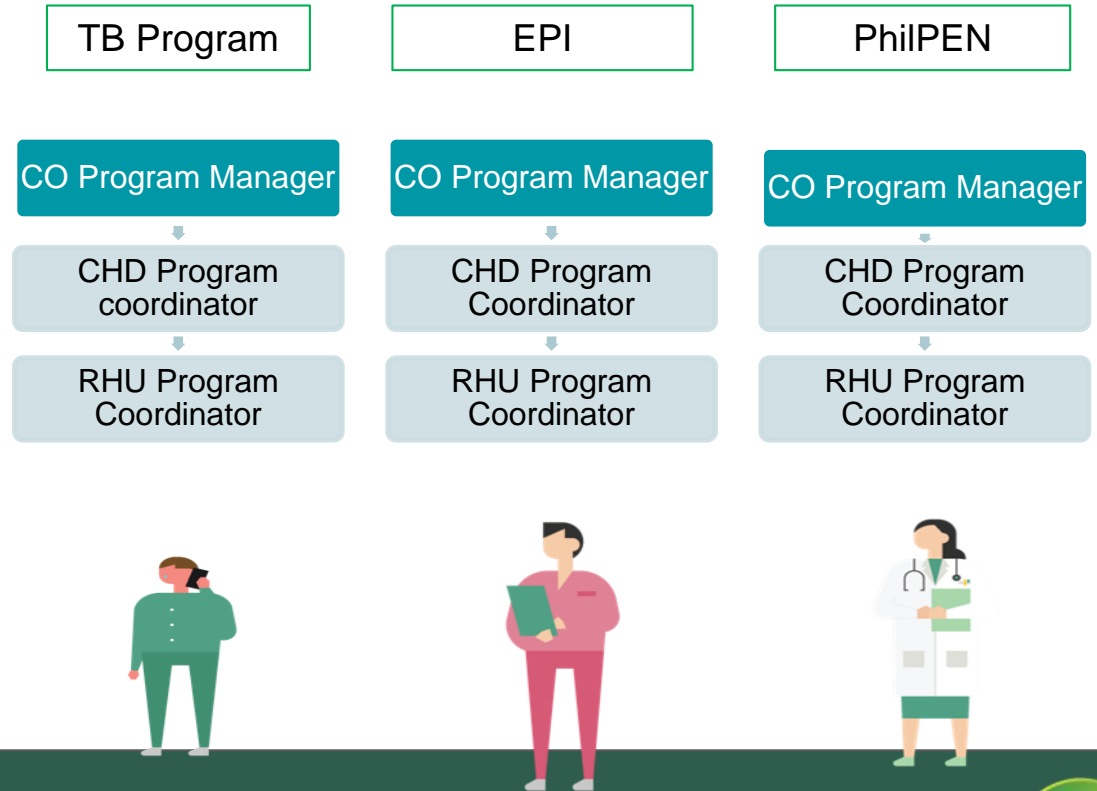
An Act Instituting Universal Health Care for All Filipinos, Prescribing Reforms in the Health Care System and Appropriating Funds Therefor



Department of Health, Philippines

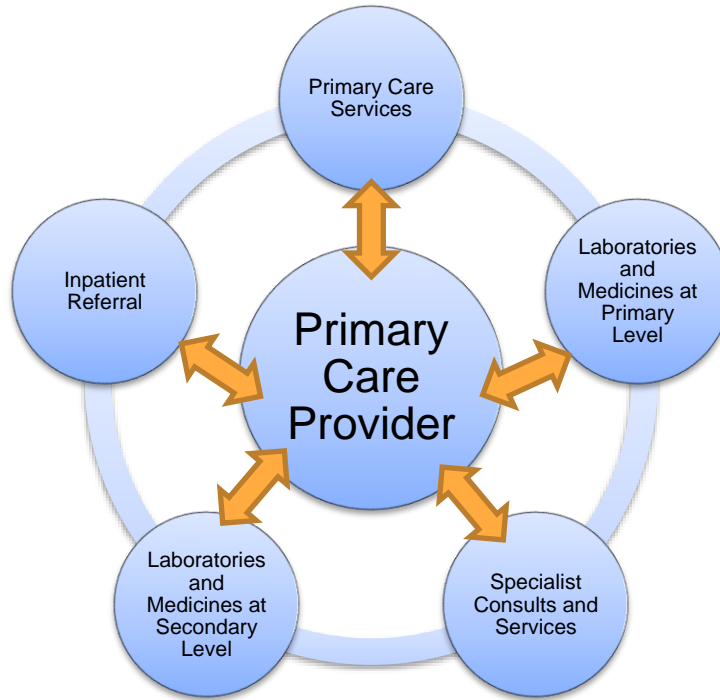


- **Vertical Programs** have fragmented the delivery of health services, all the way down to the local levels.
- RHU staffs have assumed vertical program roles and have not been holistic in their approach to patients.
- This is contrary to the UHC definition of **Primary Care**



[illegible]

Primary Care

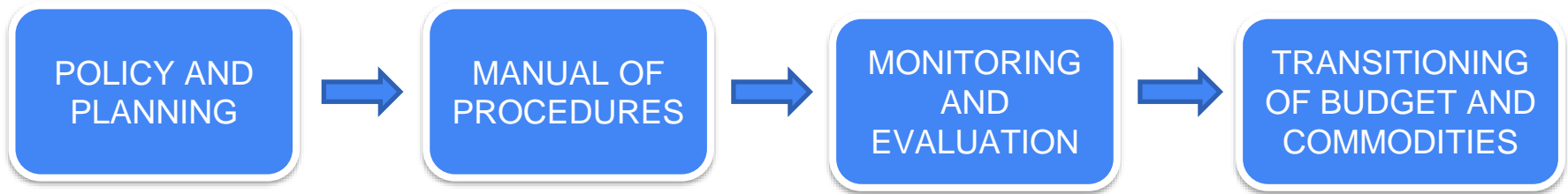


Primary care practice is defined by its ability to provide:

- **first-contact care** for persons with any undiagnosed sign, symptom, or health concern;
- **comprehensive care** for the person which is not organ- nor problem- specific;
- **longitudinal or continuous care** for the patient;
- **Coordinating care with other health services** as they relate to the patient's care.

Primary Care Provider – refers to a licensed primary care facility with certified primary care workers

DPCB and Primary Care



DOH INITIATIVES

- DOH Administrative Order 2020-0040 Guidelines on the Classification of Individual-Based and Population-Based Primary Care Service Packages
- Primary Care Service Manual of Procedures (MOP)
- Primary Care Services Training Module
- Health Services Integration



Administrative Order No.2020-0040

Guidelines on the Classification of Individual-Based and Population-Based Primary Care Service Packages



Department of Health, Philippines



Highlights

- Primary Care Service Package
- Criteria for identifying individual-based and population-based health services
- Classification of individual-based and population-based primary care services
- Financing of primary care service package



Primary Care Service Manual of Procedures (MOP)



Department of Health, Philippines



Parts of the Manual

Section 1 – The Manual of Procedures

Section 2 – Primary Care

- Definition of Primary Care
- Province-Wide and City-Wide Health Care Delivery System
- Role of Healthcare Workers in Primary Care
- Patients' and Health Workers' Rights and Safety in the conduct of Primary Care

Section 3 – Primary Care Service Packages for All Life Stages

- Pregnant
- Newborn, Infant, Child, and Adolescent
- Adult
- Older Person

Section 4 – Capacity Building

- Competency Requirements
- Infrastructure, Health Technology, Supplies

Section 5 – Monitoring and Evaluation

- Success Indicators
- Activities



Primary Care Services for All Life Stages

The Packages

Population-based
Services

Individual-based
Services for Well
individuals

Individual-based
Services for Sick
Individuals



Clinical Laboratory and Imaging	HFSRB DOH AO 2020-0047	HFDB Manual of Standards for Primary Care Facilities	PhilHealth CN 2020-0022	DPCB DOH AO 2020-0040	DPCB Primary Care Services MOP
Blood chemistry for heart, liver, renal, and metabolic functions	No	Yes	No	No	Yes
Blood typing	Yes	Yes	No	Yes	Yes
Blood urea nitrogen	No	No	No	Yes	Yes
Cardiac biomarkers	No	No	No	No	Yes
Chest x-ray	Yes	Yes	Yes	No	No
Complete blood count with platelet count	Yes	Yes	Yes	Yes	Yes
Creatinine	Yes	Yes	Yes	Yes	Yes
Dengue rapid test (IgM and IgG)	Yes	Yes	No	Yes	Yes
Dengue rapid test (NS1)	Yes	Yes	No	Yes	Yes
Diagnostic ultrasound	No	Yes	No	Yes	Yes
Electrocardiogram	No	Yes	Yes	No	No
Expanded newborn screening	No	No	No	Yes	Yes
Fasting blood sugar	Yes	Yes	Yes	Yes	Yes
Fecal immunochemical test	No	No	No	Yes	Yes
Fecal occult blood test	Yes	Yes	Yes	Yes	Yes
Fecalalysis	Yes	Yes	Yes	Yes	Yes
Filaria rapid test	No	No	No	Yes	Yes
Filaria smear	Yes	No	No	Yes	Yes
HbA1C	No	No	Yes	No	No
Hemoglobin	No	Yes	No	Yes	No
Kato katz	Yes	No	No	Yes	Yes
Lipid profile (total cholesterol, HDL, LDL, triglycerides)	Yes	Yes	Yes	Yes	Yes
Malaria rapid test	No	No	No	Yes	Yes
Malaria smear	Yes	No	No	Yes	Yes
Mammogram	No	No	No	No	Yes
Oral glucose tolerance test	Yes	Yes	Yes	Yes	Yes
Pap smear	Yes	Yes	Yes	Yes	Yes
Pregnancy Test	No	No	No	Yes	Yes
Rapid plasma reagin for syphilis	Yes	No	No	Yes	Yes
Screening for hepatitis B, syphilis, HIV	Yes	Yes	No	Yes	Yes
Slit-skin smear	Yes	No	No	Yes	Yes
Sputum microscopy or Nucleic acid amplification test	Yes	Yes	Yes	Yes	Yes
Thyroid-Stimulating Hormone test	No	No	No	No	Yes
Urinalysis	Yes	Yes	Yes	Yes	Yes
Urine dipstick test	No	No	No	No	Yes
Visual inspection with acetic acid test	No	Yes	No	Yes	Yes

Development of Primary Care Training Package



Department of Health, Philippines



Primary Care

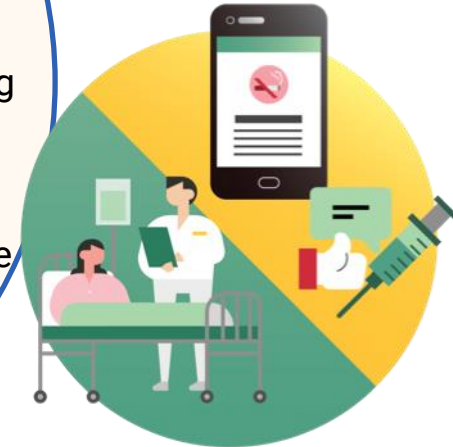
- All patients
- All presenting conditions



History Taking
Dental Services
Health Promotion
Public Health Functions
Counselling
Screening
Physical Examination
Coordinating care
Laboratory Examinations
Managing patient records



* All Primary Care services (population-based and individual-based)



A primary care worker shall be competent to provide all primary care services

PRIMARY CARE WORKER COMPETENCIES

01 Providing First Contact Care

02 Providing Comprehensive Care

03 Providing Continuing Care

04 Coordinating Care

05 Managing Patient Records

Individual-based

06 Promoting Health

07 Implementing Public/
Population Health
Services

Population-based

COMPENTENCIES (7)

1. Providing First Contact Care
2. Providing Comprehensive Care
3. Providing Coordinated Care
4. Providing Continuing Care
5. Managing Patient Records
6. Promoting Health
7. Implementing Public Health Functions

9 COURSES (Packages)

1. History Taking/ Interview on Concerns and Risks
2. Physical Examination
3. Screening and Laboratory Examinations
4. Nutrition Services
5. Oral and Dental Services
6. Vaccination for Disease Prevention
7. Counselling/ Providing Recommendations and Health Promotion
8. Birthing Services for Normal Low-risk Spontaneous Delivery
9. Provision of Family Planning Services



SAMPLE

COURSE 1: History Taking/ Interviews on Risks and Concerns

		History Taking/ Interview on		
		Well Individual	Infectious Diseases	Non-Infectious Diseases
Module 1	Infant			
Module 2	Child			
Module 3	Adolescent			
Module 4	Adult			
Module 5	Elder			
Module 6	Pregnant			



health
ilipin

Health Services Integration

- a package of preventive and curative health interventions for a particular population group
- multi-purpose service delivery points – a range of services for a catchment population is provided at one location
- achieving continuity of care over time
- integration of different levels of service
- working across sectors

Source: WHO 2018 Technical Series on Primary Health Care Integrating Health Services



TECHNICAL INTEGRATION

Core Processes in the Context of Service Delivery

Policies/Standards

Resource
Management/
Planning

Technical
Assistance

Capability Building

Sectoral and Local
Engagements

Program A

Program B

Program C

Program D

Avenues for
Integration

Integrated
Health
Services

Discrete Program Approaches

Redesigning



TECHNICAL INTEGRATION: *Products and Outputs*

Technical Integration

Primary Health Care

Special Prog.

Policy and Standards

- National practice guidelines
- Primary Care MOP - (public health mgt & clinical care)
- Technical Specifications
- HTAC/PNF application
- Costing/benefit package proposal

Technical Assistance and Resource Management

- Integrated costed strategic and implementation plans
- MYCA Proposal
- Allocation list based on framework
- Primary care training curriculum, eLearning modules
- Integrated information system

Sectoral & Local Engagements

- Public campaigns rationalized
- Stakeholders maximized and managed
- Primary care implementation review facilitated



Way Forward

- MOP on Primary Care Service ➡ Expansion Konsulta/Benefit Package for primary care
- Primary Care Training Package ➡ Primary Care Certification
- DPCB Restructuring
- Implementation of the primary care integration



Thank you



Republic of the Philippines
Department of Health