

ANNUAL PUBLIC POLICY CONFERENCE 2021

WEBINAR 4 | SEPTEMBER 23, 2021

PAVING THE WAY: HEALTHY AND ROBUST WORKFORCE



AHMMA CHARISMA LOBRIN-SATUMBA

Executive Director III

The world of work was profoundly affected by the pandemic causing social and economic disruptions.

8.8%

DECLINE IN WORKING HOURS (2020)

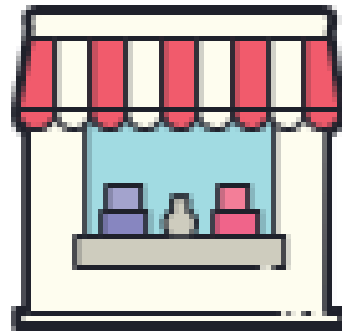
8.3%

DECLINE IN LABOR INCOME (2020)

81 million

INCREASE IN PERSONS WHO WERE OUT OF THE LABOR FORCE (2020)

The impact of the crisis in the labor market exacerbates existing decent work deficits and social inequalities.*



Many businesses, particularly MSMEs face uncertainty.



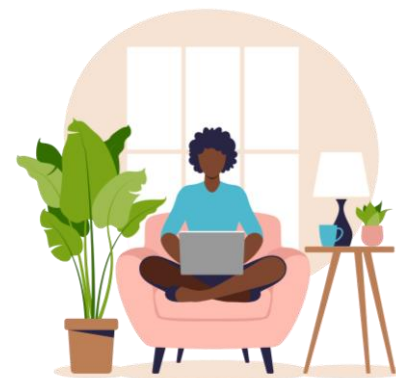
The crisis threatens progress in gender equality.



Youth employment continue to suffer with economic downturn.



Informal workers were affected by the crisis especially on access to social protection.



Moving to the online environment raises issues related to skills and working conditions.



The crisis highlighted the vulnerable situation of our migrant workers.

**ILO's World Employment and Social Outlook: Trends 2021*

(Financial Support = PHP 10.9 billion)

+2 MILLION

Beneficiaries

COVID-19 Adjustment
Measures Program
(**CAMP**)

(PHP 9.5 billion worth of assistance)

Almost **2 MILLION**

Beneficiaries

Tulong Panghanapbuhay
sa Ating Disadvantaged/
Displaced Workers
(**TUPAD**)

(total amount of PHP 5.5 billion)

+540,000

Overseas Filipino Workers

DOLE-Abot Kamay
ang Pagtulong
(**AKAP**)

+72,000

Inspected establishments

+2.9 million

Workers covered


intensified the
implementation of
**INSPECTION
PROGRAM**

- compliance with **general labor standards**
- compliance with **occupational safety and health standards**
- monitor adoption of **flexible work arrangements**, resumption of business operations, and compliance with **COVID-19 health and safety rules**

National Economic Recovery Strategy

NERS was adopted as the Philippine Government's master plan for the restoration of the country's labor market.

Department of Labor and Employment
BUREAU OF LOCAL EMPLOYMENT



**EXECUTIVE ORDER
NO. 140, SERIES OF 2021**



**National
Employment
Recovery
Strategy**
2021-2022

Adopting the **National Employment Recovery Strategy** (NERS) 2021-2022 and Reinforcing Job-Generating Programs through the **NERS Task Force**

Full Executive Order: bit.ly/EO140-21

facebook.com/BLEInfo

2020 Completed Researches

- **BIKE TO WORK:** A Survey on Use of Bike in Time of COVID-19 Pandemic
- Between Resilience and Transformation: **MENTAL HEALTH** Policies, Interventions, and Challenges in the ITBPO Sector through the Covid-19 Crisis
- Exploring **TELECOMMUTING** as the New Normal Work Arrangement: A Rapid Assessment of Telecommuting Practices Prior and During the COVID-19 Pandemic
- **WAGE SUBSIDY** Program: An Exploratory Study in the Philippines
- Facilitating Work in the New Normal: An Assessment of Local **PUBLIC EMPLOYMENT FACILITATION SERVICES** and Mechanisms in the Philippines

2021 Ongoing Researches

- Study on Human Resource Development of **HEALTH WORKERS**
- Study on **SERVICE DELIVERY WORKERS** in the Platform Economy
- Study on **OFW REMITTANCES AND REINTEGRATION** in view of the pandemic
- Study on **EMERGING FORMS OF ONLINE RECRUITMENT** and placement or e-recruitment
- Study on financing **BASIC INCOME GUARANTEE**
- Study on **UNIONS AND WORKER ORGANIZATIONS** in time of pandemic

ILS Green Jobs Advocacy

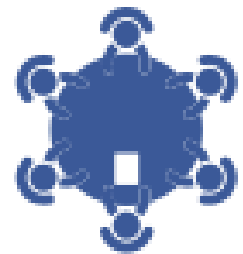
- Philippine **GREEN JOBS** Act of 2016 and the National Green Jobs Human Resource Development Plan 2020-2030
- Ongoing development of the Green Jobs **ASSESSMENT AND CERTIFICATION STANDARDS**
- Ongoing coordination with the Philippine Statistics Authority with regard to **GREEN JOBS STATISTICS** in line with the development of a database of green careers, professions, and skills.
- Ongoing support to and coordination with The World Bank, through R.G. Manabat & Co. KMPG regarding its study involving **REVIEWS CURRENT FISCAL AND REGULATORY INCENTIVES** to promote green investments.

8-Point Employment Recovery Agenda



1

Approval of the Proposed Wage Subsidy for Private Sector Workers



2

Conduct of a Job Summit



3

Support the passage of priority legislation and policies that strengthen economic and employment recovery



4

Promote retooling and upskilling of workers



5

Full implementation of youth employability programs



6

Extend assistance to establishments through loans, deferment of applicable fees, upgrading of processes



7

Provide social protection to vulnerable groups



8

Monitor and support continuous implementation of programs with high impact on employment

A group of people, including children and adults, are gathered in a community setting. Some individuals are wearing face shields and masks, suggesting a health or safety context. The scene is dimly lit, with a focus on the people's interactions.

Adopt and institutionalize the Social Protection Floor

A flagship strategy under the updated Philippine Development Plan 2017-2022 which is instrumental in guaranteeing the access of people to social protection services.

Development of the Social Protection (SP) Plan

HARMONIZE

Align, organize and harmonize all existing and future policies and programs relating to social protection across governance levels

GUIDANCE

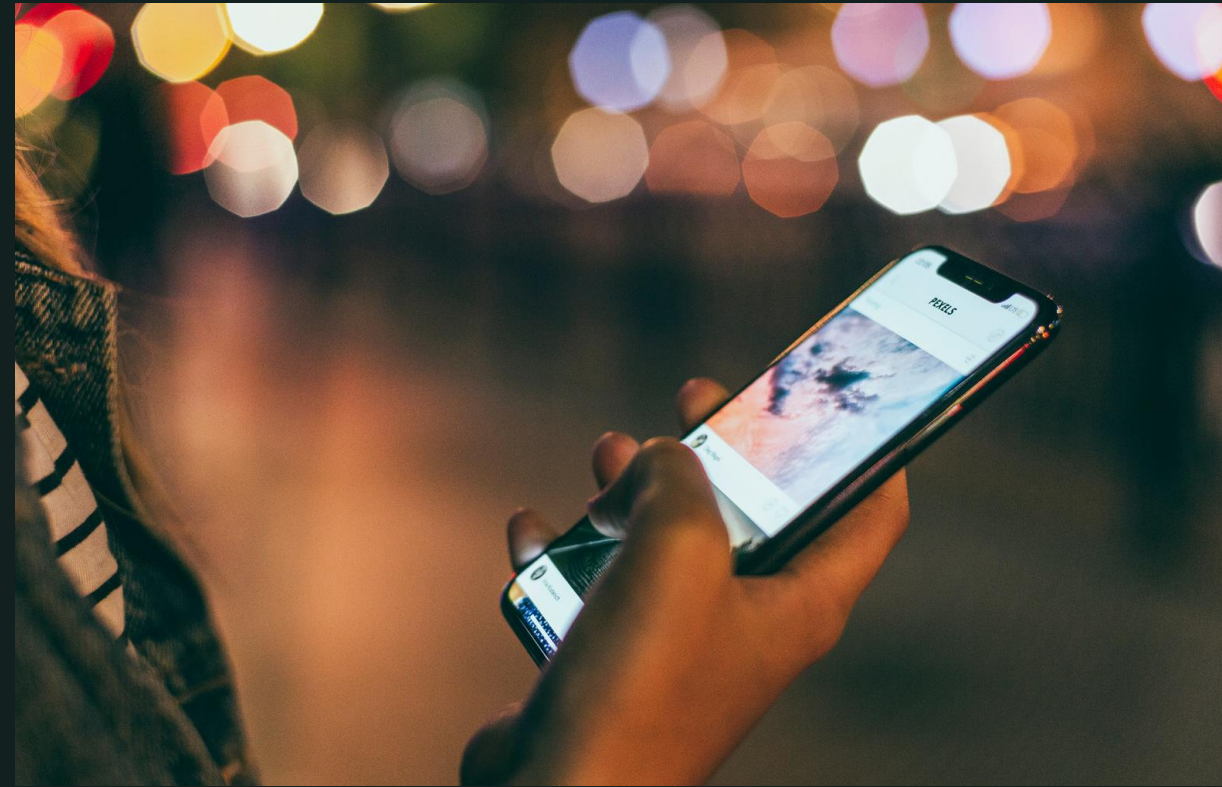
Provide guidance to national government agencies, local governments and civil society in SP program and project development, implementation and evaluation

REFORM

Propose reforms in existing policies and programs relating to social protection

GOVERNANCE

Lay the foundations for a universal and integrated social protection system in terms of data, policies and governance structure



As new patterns of work unfold from technological advances - how people work, where they work, what jobs exist, discussions also revolved on how we can maximize the opportunities, while mitigating the risks. Social dialogue is highly relevant in these challenging times and as we grapple the changing world of work.

Social dialogues

To leverage opportunities and at the same time address the issues



TGER NERS JOB SUMMIT
2021 • 2022
LABOR DAY 2021
READY FOR WORK, OPEN FOR BUSINESS

Geared Up for the Safe Re-opening of the Economy

WITH THE SUPPORT OF:

ADB | ILO | THE WORLD BANK
IBRD • IDA | WORLD BANK GROUP

IN PARTNERSHIP WITH PRESIDENTIAL COMMUNICATIONS OPERATIONS OFFICE

1 May 2021
1:00 - 3:00 PM
REGISTRATION:
tgenernersjobsummit.adb.org

The poster features a grid of logos for various Philippine government departments and agencies, including DTI, DAR, DICT, and the Department of Agriculture. It also includes a QR code for registration and the event details.

The Department has conducted the Jobs Summit and other consultation activities to identify relevant strategic policy actions.

End of Presentation

Thank you



INSTITUTE FOR LABOR STUDIES
WWW.ILS.DOLE.GOV.PH



INSTITUTE FOR LABOR STUDIES - DOLE
@ILSDOLEOFFICIAL