



Brunei Darussalam - Indonesia - Malaysia - Philippines
Ease ASEAN Growth Area
(BIMP-EAGA)



“Strengthening BIMP EAGA and other Sub-regionals Towards Stronger ASEAN Community”

Public Symposium on Building ASEAN Socio Cultural
Community and Nation Building
Marco Polo Hotel, Davao City
August 24, 2017

*A presentation by Asec. Romeo M. Montenegro, Deputy Executive Director,
Mindanao Development Authority (MinDA)*





BIMP-EAGA in the context of ASEAN Integration: *The New Narrative*



BIMP-EAGA HISTORY

BIMP-EAGA begun as a main agenda item in the high level talks of then President Fidel V. Ramos with his BIM counterpart Heads of States in 1992.

BIMP-EAGA Inaugural Senior Officials' Meeting and Ministers' Meeting (SOM/MM) was held in Davao City, Philippines on 24-26 March 1994.

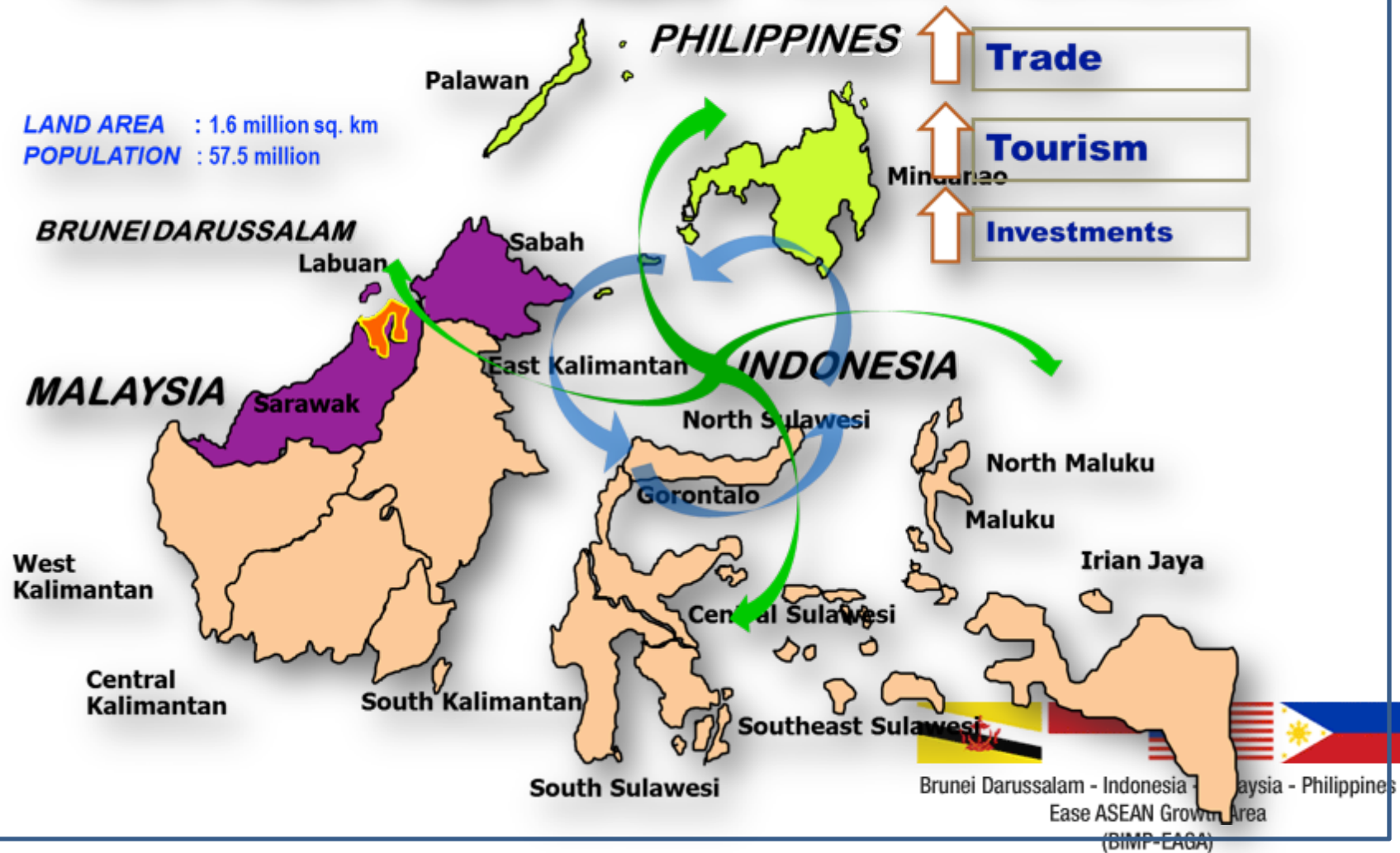


GEOGRAPHY

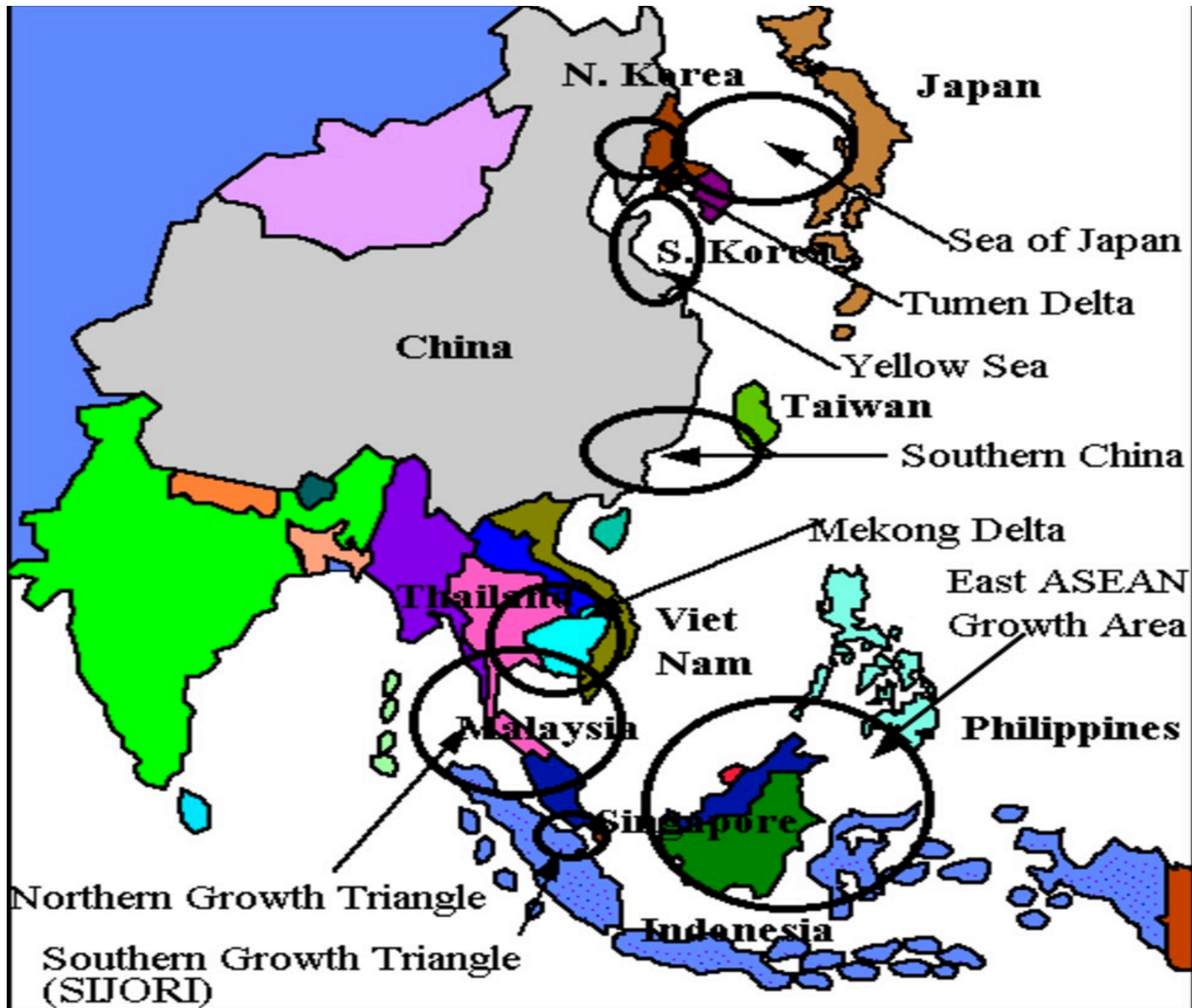


BIMP-EAGA

LAND AREA : 1.6 million sq. km
POPULATION : 57.5 million

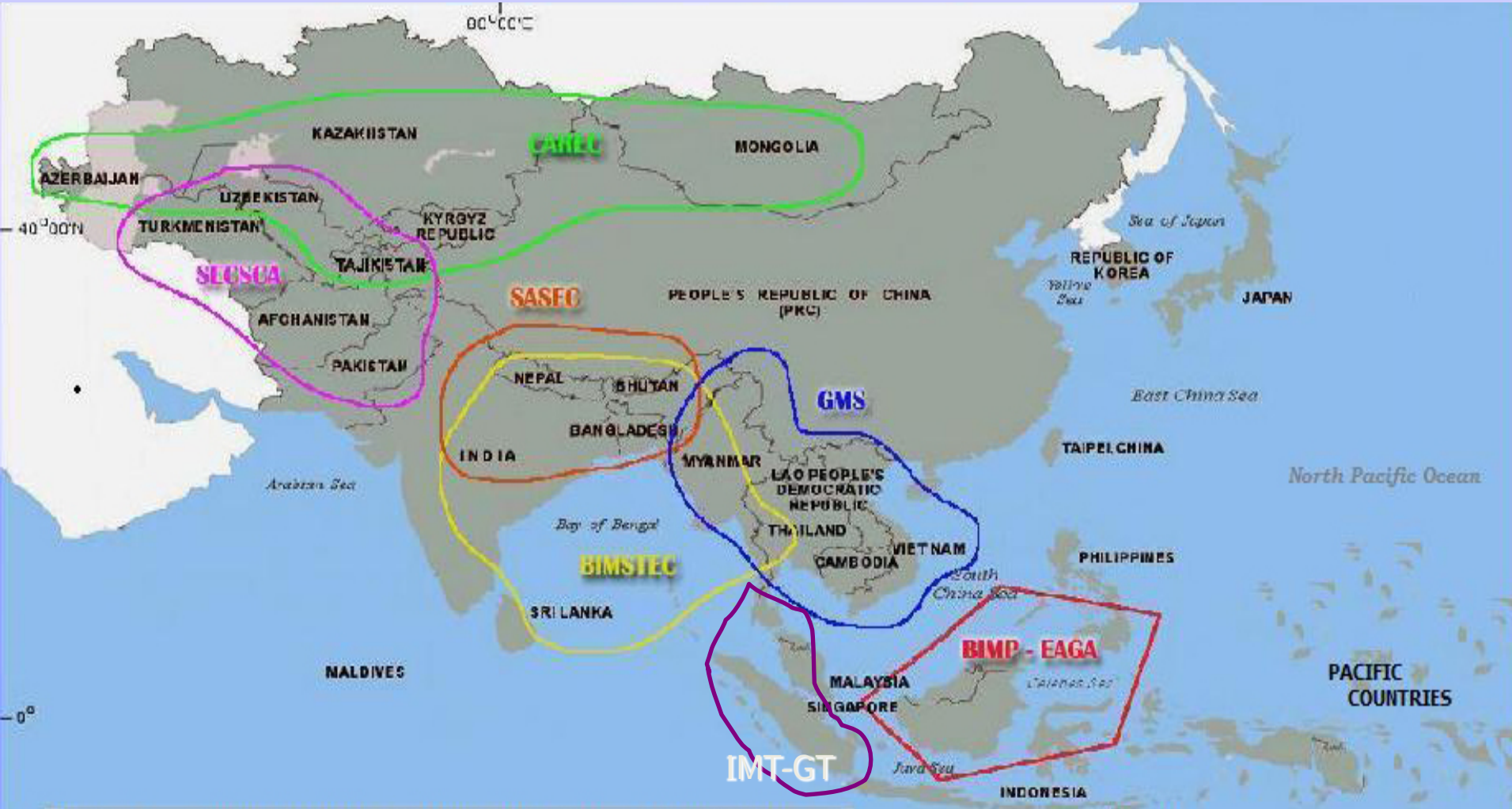


Growth Triangles in Asia



Subregional Cooperation
Initiatives GMS, BIMP-EAGA and
IMT-GT: *Forming the Building
Blocks for ASEAN Integration*

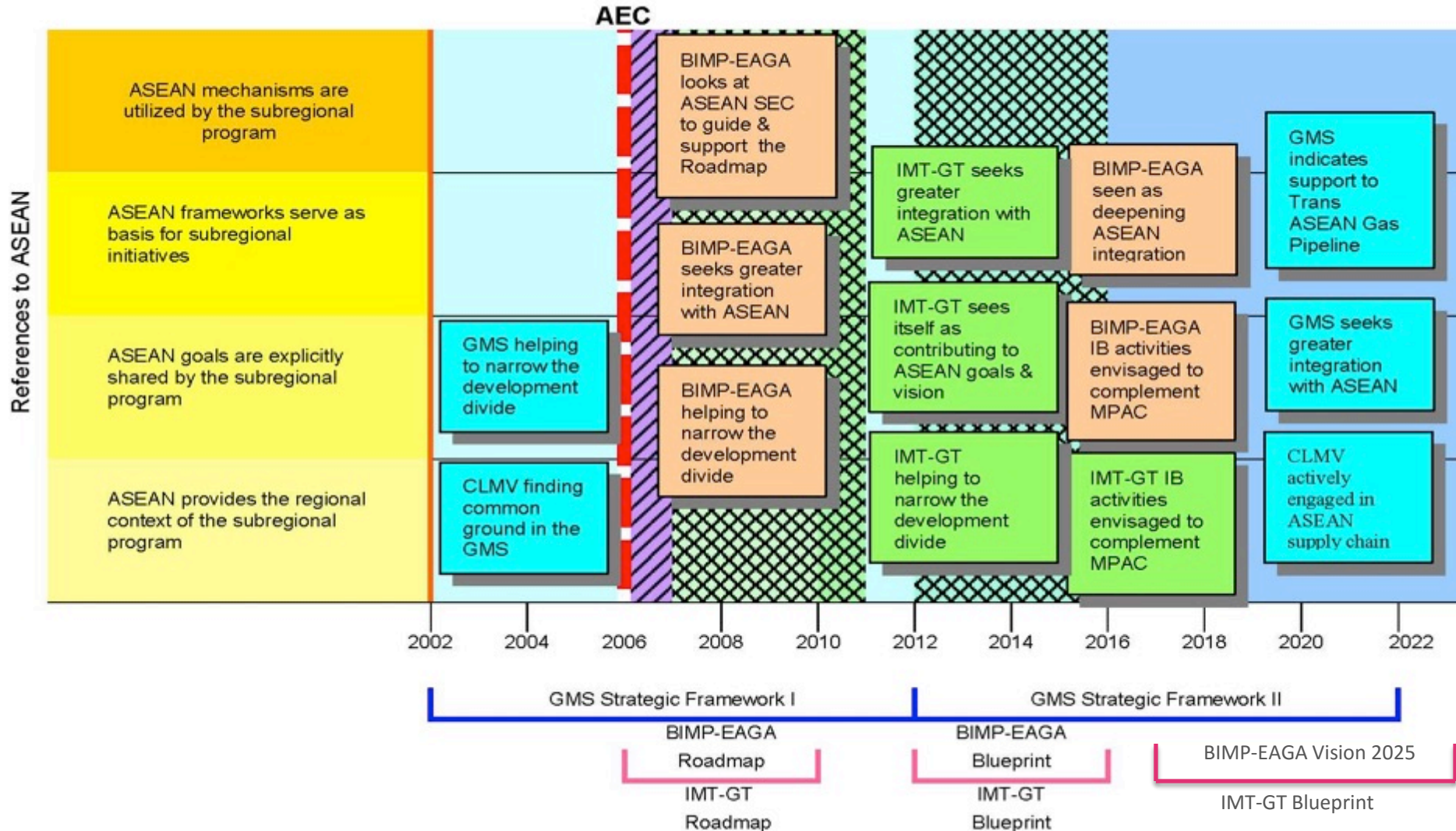
Connecting Asia Through Subregional Cooperation Initiatives



BIMP-EAGA	Brunei Darussalam-Indonesia-Malaysia-Philippines East ASEAN Growth Area
BIMSTEC	Bay of Bengal Initiative for Multisectoral Technical and Economic Cooperation
CAREC	Central Asia Regional Economic Cooperation
GMS	Greater Mekong Subregion
SASEC	South Asia Subregional Economic Cooperation
SECSA	Subregional Economic Cooperation in South and Central Asia
IMT-GT	Indonesia-Malaysia-Thailand Growth Triangle

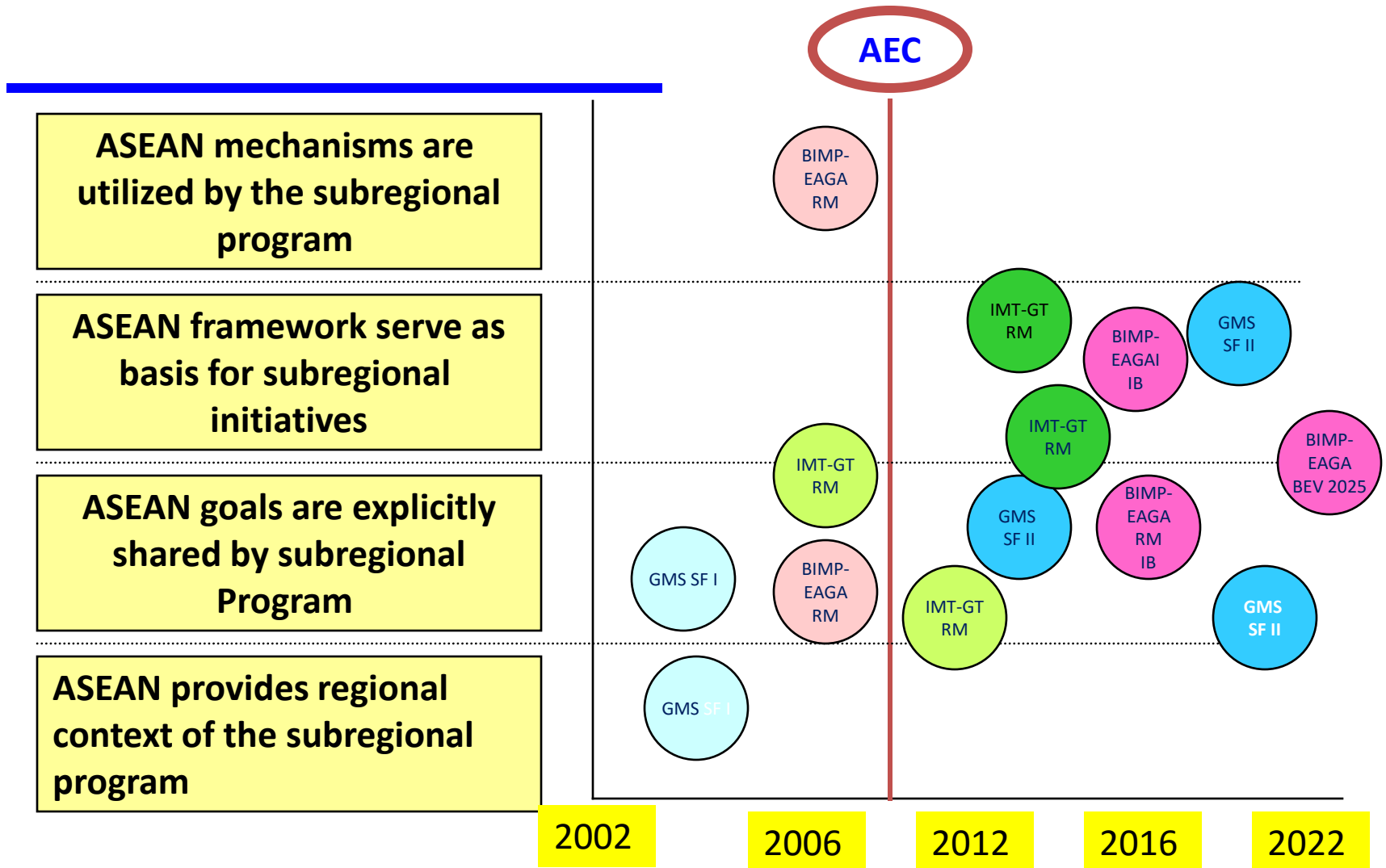
Strategy Map: GMS, BIMP-EAGA, IMT-GT with Reference to ASEAN

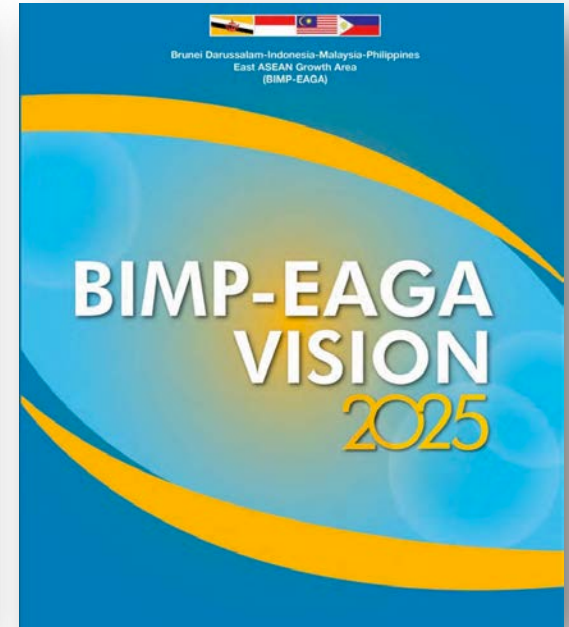
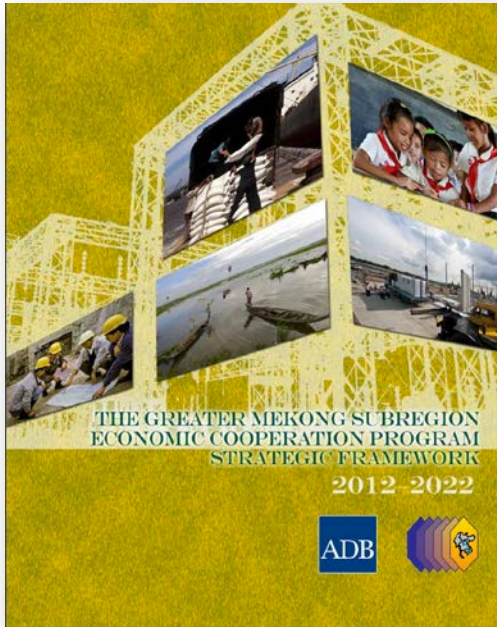
Figure 1: Map of Subregional Programs' Strategies with Reference to ASEAN



Closer links were observed with ASEAN after AEC

Major Findings: Strategy Level ←





Subregional Programs Strategic Frameworks, Blueprints and Key Features

Sector and Multi-sector Priorities

Corridor Development

Transport Linkages
(Roads and Railways)

Energy and Power
Market Integration

Tourism (Mekong as
single destination)

Agriculture (Competitive,
Climate-friendly and
sustainable)

ICT Linkages and
Applications

Environmental
Performance (Enhanced)

HRD initiatives (facilitate
process of GMS
integration and address
negative consequences)

GMS Strategic Framework (2012-2022)

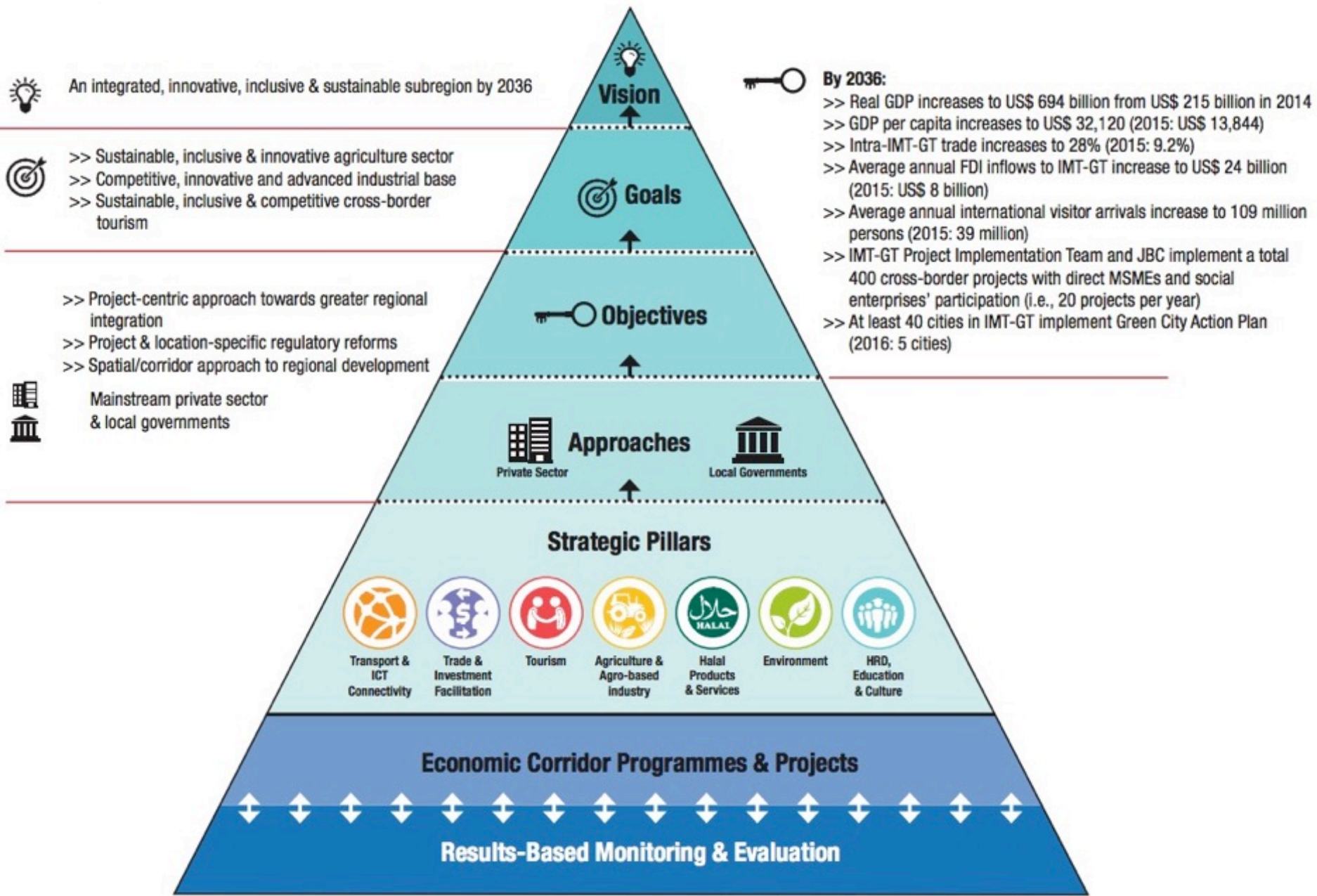
Implementation

- Resource Mobilization
- Knowledge Platform
- Capacity Building
- Stakeholders Engagement
- Monitoring & Evaluation
- Sector Forums
- Working Groups
- Strategic Alliances and Partnerships
- External Partners

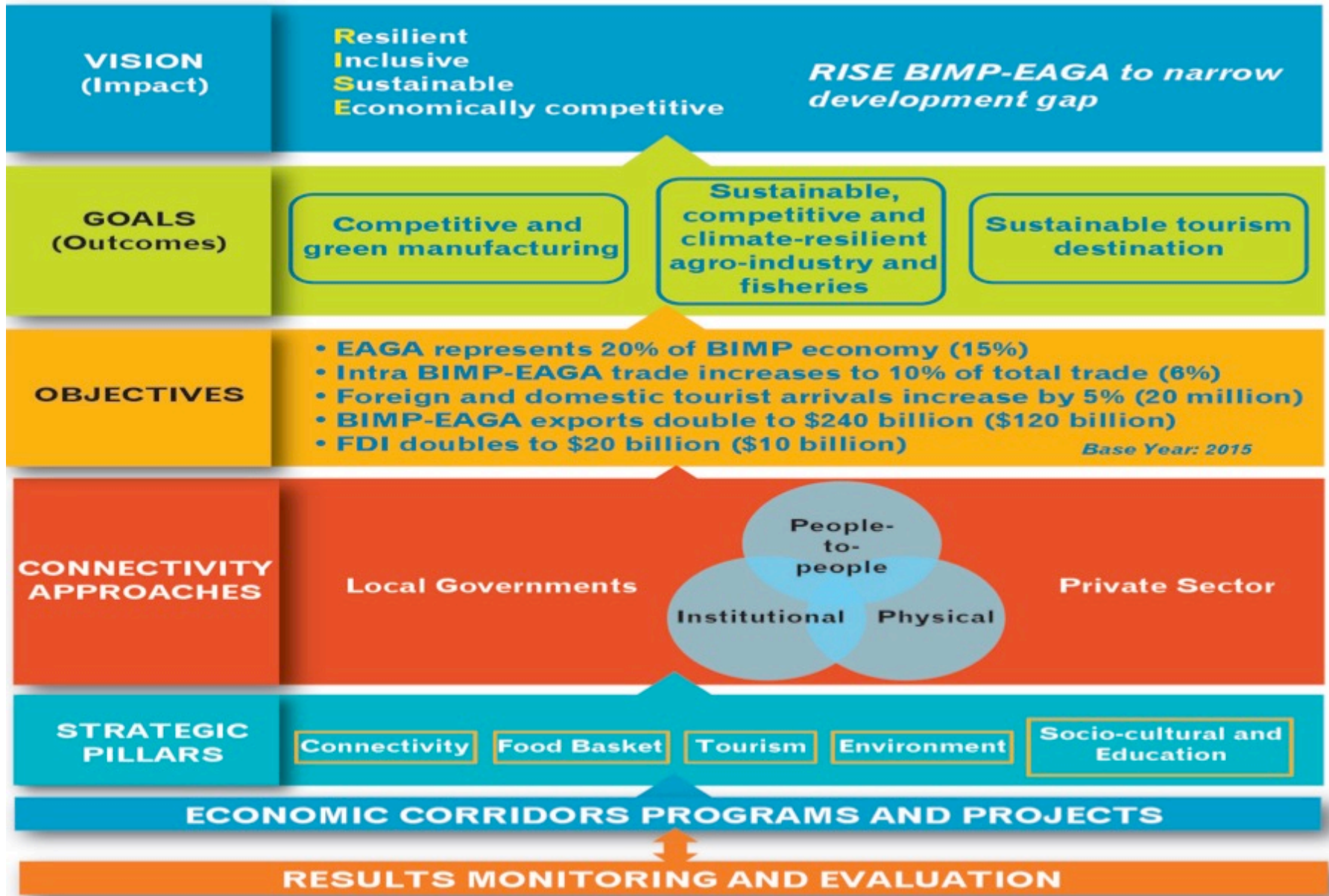
Vision

More
Integrated
Prosperous
and
Equitable
Subregion

Guiding Framework of IMT-GT Vision 2036 and IB 2017-2021



BIMP-EAGA Vision 2025: Charting a New Vision



Subregional Programs in Southeast Asia Key Features (1)

Key features (Year established)	GMS (1992)	BIMP EAGA (1994)	IMT-GT (1993)
Membership	Cambodia China Lao PDR Myanmar Thailand Viet Nam	Brunei Indonesia (<i>Kalimantan, Sulawesi, island chain in Maluku and Papua</i>) Malaysia (<i>Sabah, Sarawak and Labuan</i>) Philippines (<i>26 provinces of Mindanao and Palawan</i>)	Indonesia (<i>10 provinces on island of Sumatra</i>) Malaysia (<i>8 states</i>) Thailand (<i>14 provinces in South</i>)
Objectives/Focus	Connectivity Mutual Trust Economic cooperation	Accelerate socio-economic progress of less developed areas	Accelerate economic transformation of member states and provinces
Geographic Characteristics	Contiguous	Dispersed	Contiguous except for Indonesia components

Subregional Programs in Southeast Asia Key Features (2)

Key features (Year established)	GMS (1992)	BIMP EAGA (1994)	IMT-GT (1993)
Sectors and Areas of Cooperation	Socioeconomic	Socio-economic	Socioeconomic
Decision Making Rules and processes	By consensus	By consensus	By consensus
National Secretariat	Economic ministries or agencies except Lao PDR	Economic or planning ministries or agencies	Economic or planning ministries or agencies
Private Sector Counterpart	GMS Business Forum	BIMP-EAGA Business Council	Joint Business Council
Local Government Participation	Economic Corridors Forum	Local Government Forum	Governors Forum
Donor's Coordination	Development Partners Meeting	Adhoc meetings	Adhoc meeting

Sectors of Cooperation: ASEAN, GMS, BIMP-EAGA, IMT-GT

Sectors	ASEAN	GMS	BIMP-EAGA	IMT-GT
Agriculture				
Trade				
Investment				
Transport				
Telecommunications				
Energy				
HRD				
Tourism				
Environment				
Finance				

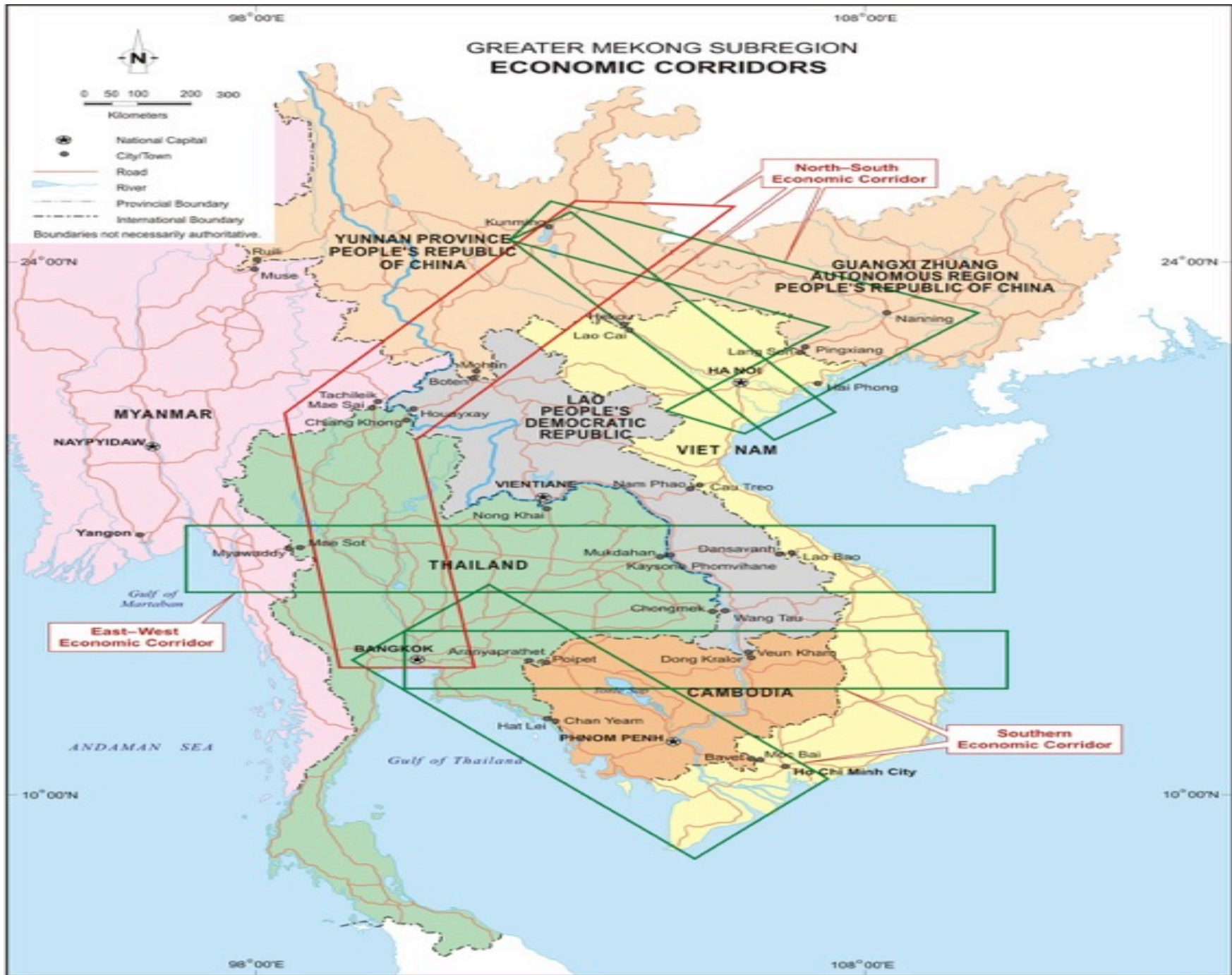


Economic Corridor Development and Subregional Connectivity

Development Through The Economic Corridor Approach

Infrastructure is developed in specific geographical areas based on economic potential.

- Initially highly efficient transport system that allows people and goods to move around Subregion
- Subsequently focus on improving “software” and infrastructure investments for urban development
- Holistic strategy improves quality and reach of intraregional infrastructure benefitting both subregion and individual economies
- Transport corridors to provide a backbone or spatial focus for regional cooperation projects and activities, clustering them along corridors or at nodal centers on the corridors



INDONESIA-MALAYSIA-THAILAND GROWTH TRIANGLE



- IMT-GT Province/State
 - Economic Corridor
 - National Capital
 - Provincial/State Capital
 - City/Town
 - Airport
 - National Road
 - Other Road
 - Provincial/State Boundary
 - International Boundary
- Boundaries are not necessarily authoritative.

West Borneo Economic Corridor

Sabah Development Corridor

- Oil palm
- cocoa
- rubber
- seaweed

Sarawak Corridor of Renewable Energy (+ oil palm, fish & aqua, livestock)

East Borneo Economic Corridor

Mindanao & Palawan Corridor

[tropical fruits (pineapple, banana, mango, papaya), rice, coconut, rubber, fishery (seaweeds, tuna & sardines), poultry]

Greater Sulu Sulawesi Corridor

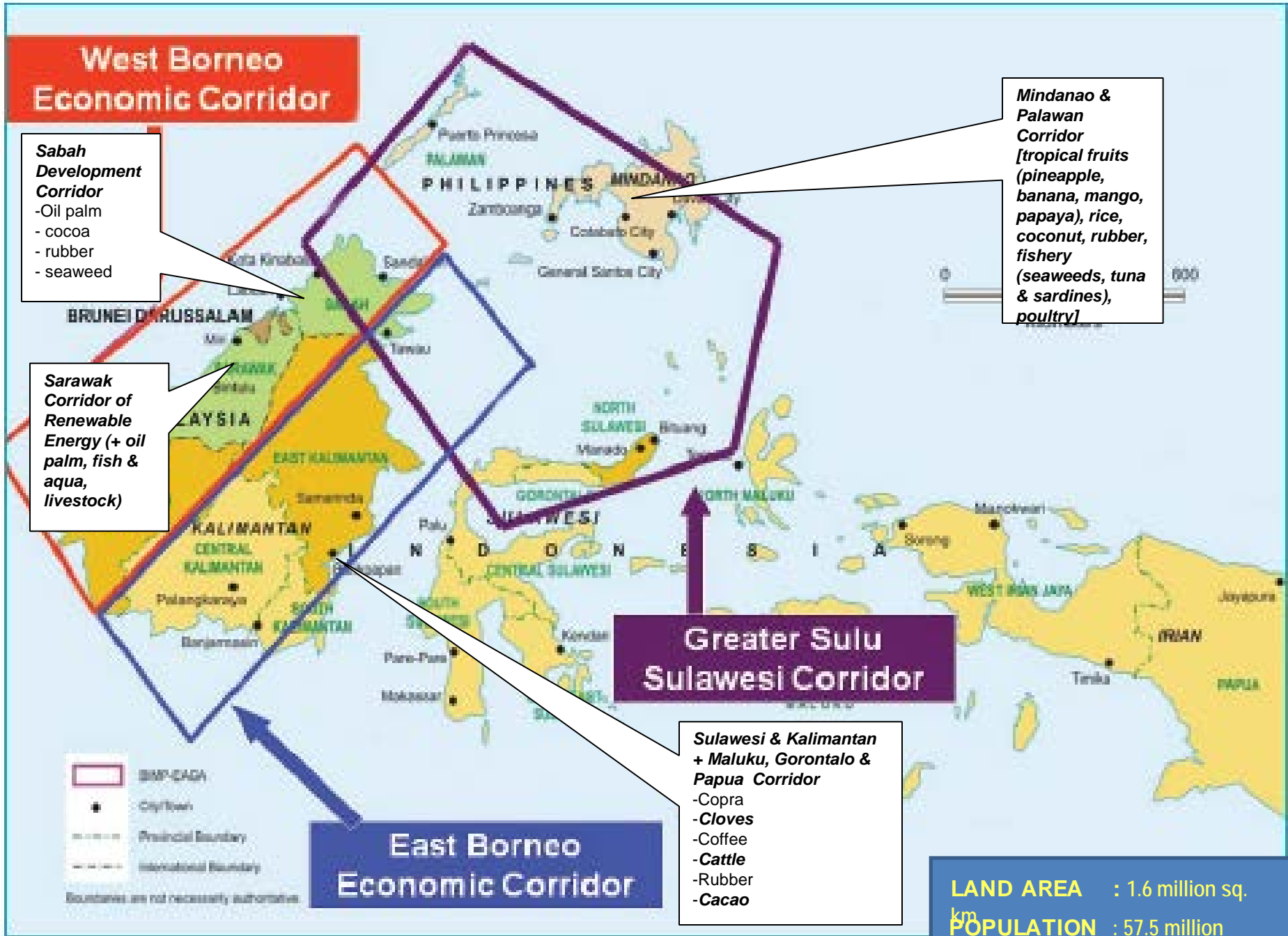
Sulawesi & Kalimantan + Maluku, Gorontalo & Papua Corridor

- Copra
- Cloves
- Coffee
- Cattle
- Rubber
- Cacao

LAND AREA : 1.6 million sq. km
POPULATION : 57.5 million

- ◻ BIM-CADA
- City/town
- Provincial Boundary
- International Boundary

Boundaries are not necessarily authoritative.

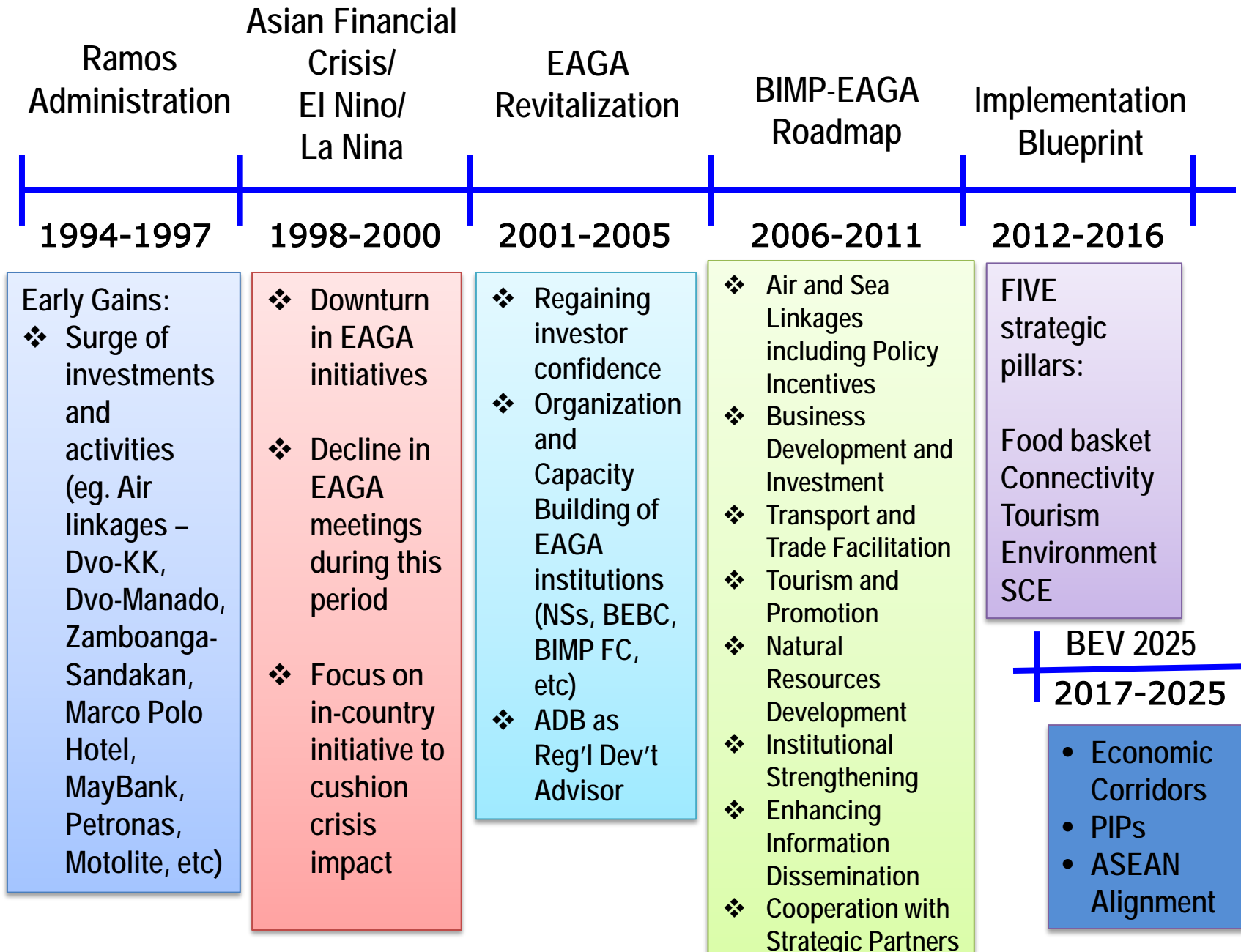




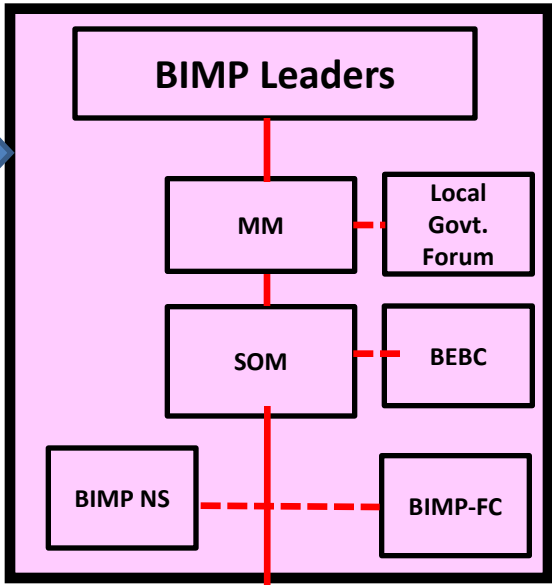
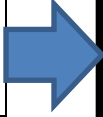
Harnessing Potentials Under BIMP-EAGA:

- **A test-bed for ASEAN protocols and agreements**
- **A building-block towards achieving ASEAN Integration**

BIMP-EAGA Through the Years



BIMP-EAGA
Strategic, Policy
Guidance, and
Administration



Key

- Brunei Darussalam
- Indonesia
- Malaysia
- Philippines
- Sectoral MM (yet to be convened)

Agriculture & Fisheries MM

Transport MM

Other Relevant Ministries

BIMP Line Ministers' Meetings

BIMP Line Ministers' Meetings

Food Basket Pillar

- Agri-Business Cluster
- Agro-Industry WG
- Fisheries WG

Connectivity Pillar

- Infrastructure Connectivity Monitoring Unit
- Transport Cluster
 - Air WG
 - Sea WG
 - Land WG
- Trade and Investment Facilitation Cluster
 - SMED WG
 - CIQS WG
- Power Infrastructure Cluster
- ICT Infrastructure Cluster

Tourism Pillar

- Tourism Cluster

Environment Pillar

- Environment Cluster

Socio-Cultural & Education Pillar

- Socio-Cultural & Education Cluster
 - HRD WG
 - SCD WG

Dynamic Public-Private Partnership

Private Sector

- Engine of growth
- Takes advantage of emerging trade, tourism and investment opportunities
- Principal advocate for a more business-friendly policy and regulatory environment

Public Sector

- Establishes the enabling environment for private sector investments
 - Infrastructure (transport, energy, ICT)
 - Trade facilitation (CIQS)
 - Addressing other non-tariff barriers



BIMP-EAGA STRATEGIC PILLARS

Connectivity

- Infrastructure Development
- Air, Sea, & Land Services
- Power Interconnection & Renewable Energy
- ICT
- Trade Facilitation

Food Basket

- Food Security
- Export Development
- Sustainable Livelihood

Tourism

- Community-based Ecotourism
- Marketing and Promotion

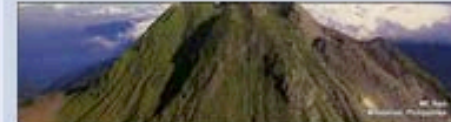
Environment

- Sustainable Management of Critical Ecosystems
- Climate Change
- Clean and Green Production Technologies
- Trans-boundary Issues
- Environment Mainstreaming

Socio-Cultural and Education*

- Human Resource Skills and Technical Development
- Socio-Cultural

**New Pillar*



Targets by 2030

- ✓ **EAGA represents 20% of BIMP economy (15%, 2015)**
- ✓ **EAGA exports double to \$240 billion (\$120 billion, 2015)**
- ✓ **Intra-EAGA trade increases to 10% of total trade (6%, 2015)**
- ✓ **FDI doubles to \$20 billion (\$10 billion, 2015)**
- ✓ **Foreign & domestic tourist arrivals up by 50% (20M, 2015)**

BIMP-EAGA PRIORITY INFRASTRUCTURE PROJECTS (PIPs)

PROJECT	Estimated Project Cost (US\$ Million)
Roads, Railways and Bridges	12,659
Inland Transport Services	23
Airports	1,740
Seaports	3,776
Power and Energy Infrastructure	2,2186
ICT	150
Trade Facilitation (CIQS Facilities and Ecozones)	433
Environment and Urban Development	400
GRAND TOTAL	\$21,367

Preliminary list as of April 2017. Projects and estimated costs are subject to review and validation by member countries.

BIMP-EAGA: RENEWAL OF CENTURIES-OLD BROTHERLY TIES









BIMP-EAGA and Strategic Partners



ASEAN Secretariat

- Strengthened collaboration between BIMP-EAGA institutions and ASEAN Secretariat
- Facilitated the fast-tracking of ASEAN agreements/ initiatives in the BIMP-EAGA
- Assisted in profiling BIMP-EAGA to ASEAN Dialogue Partners
- Assisted in mobilizing resources from Dialogue Partners



Asian Development Bank (ADB)

- **Developing power and transport infrastructure projects**
- **Continuing technical assistance in transport, power, transport facilitation, economic corridor, climate change adaptation; and capacity building**
- **Linking BIMP-EAGA with ASEAN sectoral bodies and other sub-regional groupings (IMT-GT, GMS)**
- **Support for institutional and operational links with CTI and HOB**



People's Republic of China



- ❑ BIMP-EAGA Mutual Trade and Investment Mission in China by SMED
- ❑ Technical visit to Key Infrastructure Sites in China by Land Transport WG
- ❑ Green ICT and E-Waste Management Seminar

Area of Interest:

- *Tourism promotion facilities (i.e. water parks)*

Government of Japan



- ❑ Continued to provide support on capacity building program
- ❑ On-going consultation on Framework of Economic Cooperation (FoEC) with Japan

Areas of Interest:

- *Sharing Japan's experience through dispatch of experts from Japan or invitation to Japan and symposium*
- *Implementation of development projects*
- *Private sector cooperation*



Northern Territory of Australia

□ Deepen economic cooperation with BIMP-EAGA through:

- ❖ Enhancement of multi-modal transportation links
- ❖ Sharing of technologies and best practices, inter alia, in renewable and clean energy
- ❖ Tourism promotion
- ❖ Freer movement of people
- ❖ Sustainable development
- ❖ Food security

Current Updates and Recent Developments in the BIMP-EAGA

Pillar 1: Enhancing Sub-regional Connectivity



Air Connectivity



Legend:

- Existing (Air)
- - - - Proposed (Air)

Existing Air Linkages

- *KK – BSB (Maswings)*
- *Kuching - BSB (MASwings)*
- *Kuching – Pontianak (MASwings)*
- *Tawau – Tarakan (MASwings)*
- *Davao – Manado (Wings Air-Charter)*

Proposed Air Linkages

- *Puerto Princesa – KK*
- *Zamboanga – Sandakan*
- *Balikpapan – Kuching (MASwings)*
- *Balikpapan- KK (MASwings)*
- *Pontianak- Miri (Kalstar Air)*
- *Tarakan – KK (Kalstar Air)*

Sea Connectivity



- Existing Sea Link**
- **Zamboanga – Sandakan (Passenger Ferry)**
- New Initiative**
- **Davao – GenSan – Bitung (RORO)**
- Proposed Sea Linkages**
- **Brooke's Point – Kudat (RORO)**
 - **Zamboanga – Muara**
 - **Brooke's Point – Labuan – Muara**

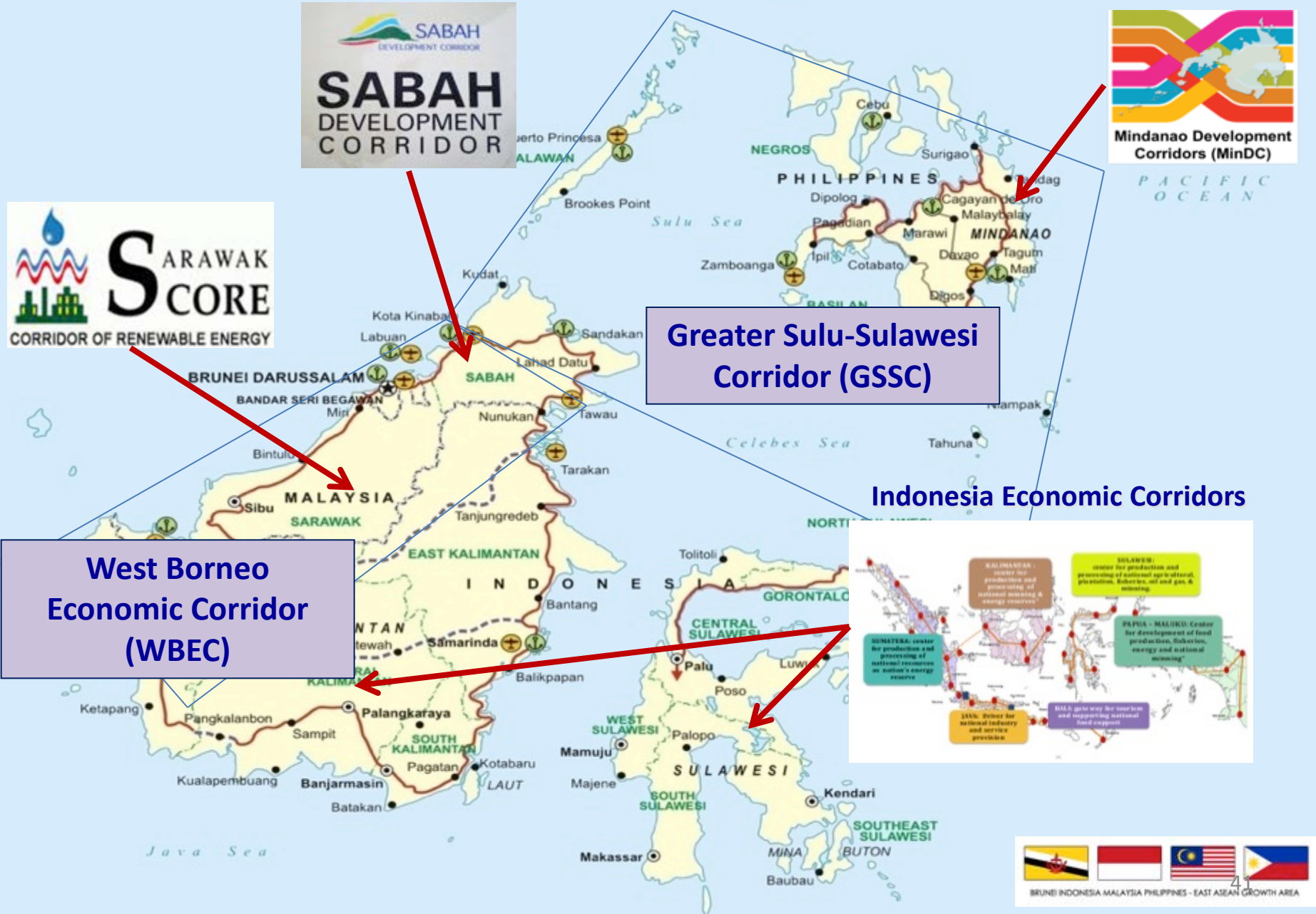
Investment Profiling in BIMP-EAGA Corridors



Greater Sulu-Sulawesi Corridor (GSSC)

West Borneo Economic Corridor (WBEC)

Indonesia Economic Corridors



Pillar 2:
Establishing
BIMP-EAGA
as a
Food Basket
for ASEAN
and the Rest
of Asia



BIMP-EAGA Food, Agribusiness and Logistics Corridors (Indicative Mapping)

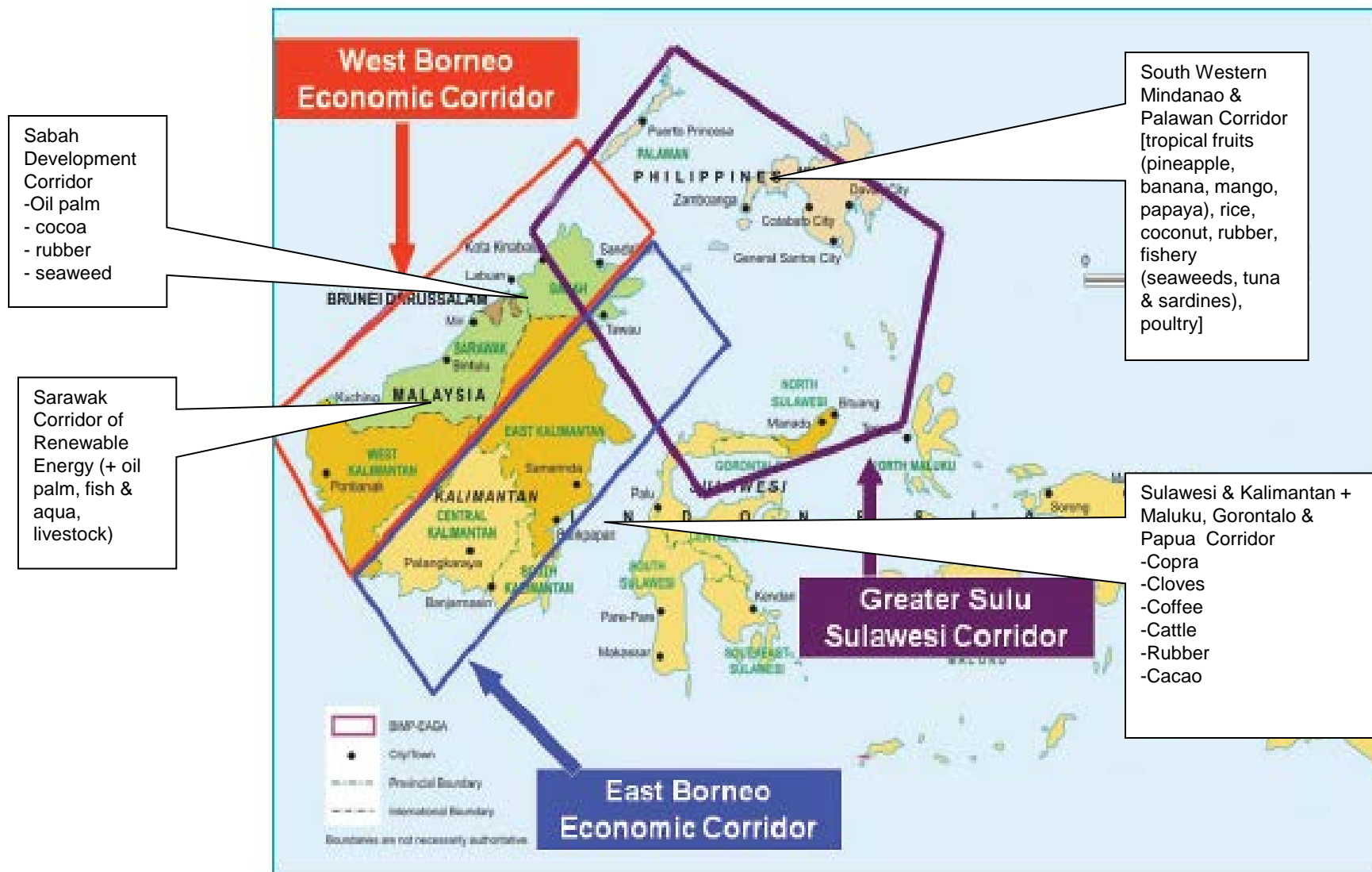


Figure 2. EAGA Economic Corridors viz Proposed Food Corridors

The previously identified Economic Corridors of EAGA (under ADB TA) can be reviewed & expanded.

Pillar 3: Promoting BIMP-EAGA as a Premier Regional Tourism Destination



EQUATOR ASIA
THE HEART OF BIODIVERSITY



BRUNEI INDONESIA MALAYSIA PHILIPPINES - EAST ASIAN GROWTH AREA

BIMP-EAGA World Heritage Sites



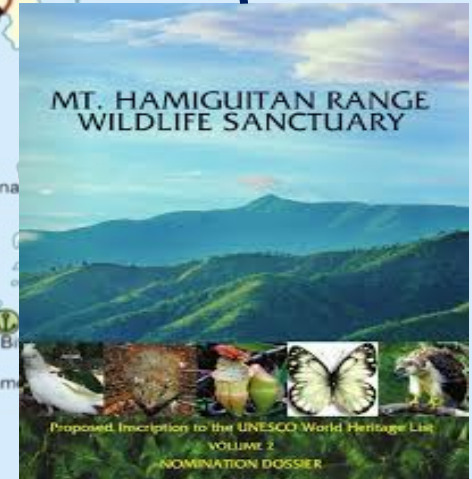
Kinabalu National Park, Kota Kinabalu, Sabah, Malaysia



Gunung Mulu National Park, Miri, Sarawak, Malaysia



Puerto Princesa Subterranean River, Palawan, Philippines



Mt. Hamiguitan Range Wildlife Sanctuary, Davao Oriental, Philippines

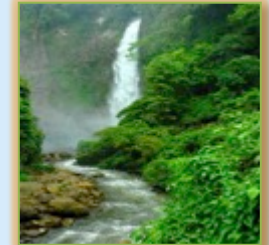
Community-based Ecotourism (CBET) Pilot Sites



Kg. Melilas,
Brunei Darussalam



Puerto Princesa
Underground, Palawan,
Philippines



Lake Sebu, Mindanao,
Philippines



Benuk Village, Sarawak,
Malaysia



Kayan Mentarang East
Kalimantan, Indonesia



Lake Sebu,
Mindanao,
Philippines



Lake Sentarum, West
Kalimantan, Indonesia



Tanjung Putting, Central
Kalimantan, Indonesia



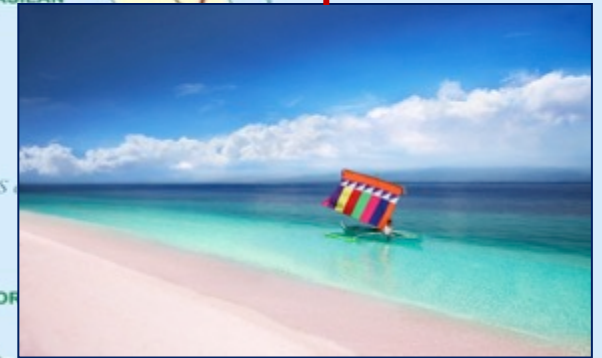
Manado Tua, North
Sulawesi, Indonesia



Community-based Ecotourism (CBET) New Sites



**Kampung Patau-Patau,
Labuan, Malaysia**



**Santa Cruz Island, Zamboanga
City, Philippines**

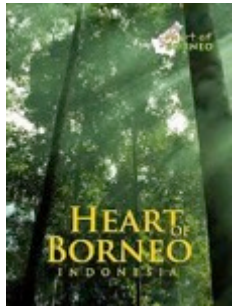


**Kampung Kiudang,
Brunei Darussalam**

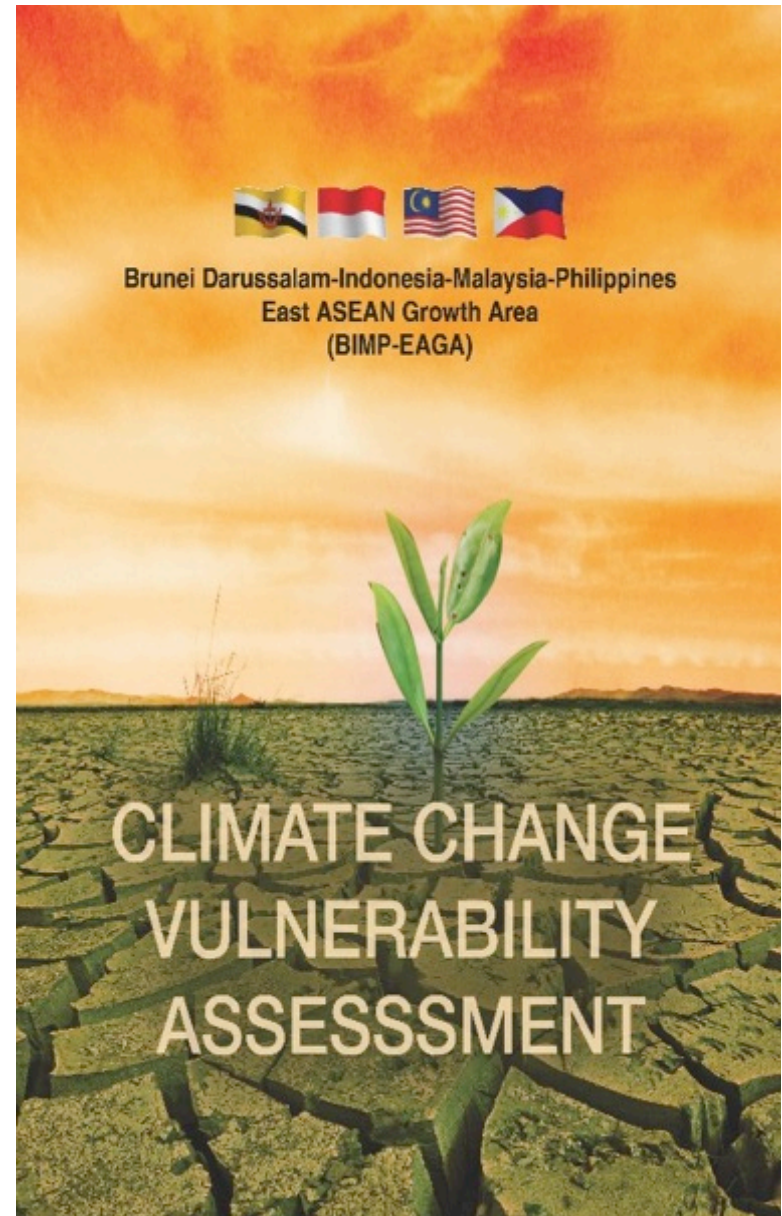


**Kampung Sungai Labu,
Labuan, Malaysia**

Pillar 4: Ensuring Sustainable Management of the Environment



- **Climate Change Vulnerability Assessment**
 - *Capacity building program for local governments and local communities on climate change mitigation and adaptation best practices*
- **Operational collaboration with Coral Triangle Initiative (CTI) and the Heart Of Borneo (HoB)**



New Pillar 5: Socio-Cultural and Education



BRUNEI INDONESIA MALAYSIA PHILIPPINES - EAST ASIAN GROWTH AREA

New Pillar: Socio-Cultural and Education

■ Components

➤ *Human Resource Development*

- ✓ *Technical and vocational education and training*
- ✓ *Higher education – university network and student exchange*

➤ *Socio-Cultural Development*

- ✓ *Social and cultural heritage*
- ✓ *Sports and other events*





BIMP-EAGA FRIENDSHIP GAMES





As the Association of Southeast Asian Nations (ASEAN) turns 50, Brunei, Indonesia, Malaysia and the Philippines in the East Asian Growth Area (BIMP-EAGA) come together to celebrate their rich diverse cultures and shared heritage

BUDAYAW

The BIMP-EAGA Art and Culture Festival 2017

20-24 September 2017

*General Santos City and Sarangani Province
Mindanao, Philippines*

The Budayaw logo is inspired by the Sarimanzok, the mythical bird soaring in the popular imagination of Mindanao in the Southern Philippines, reflecting the shared symbols of the culturally diverse but interconnected peoples of the BIMP-EAGA.



BIMP-EAGA in the context of ASEAN Integration: *The New Narrative*





Thank You
Terima Kasih
Maraming Salamat