

Philippine Institute for
Development Studies

19th Development Policy
Research Month
September 2021

“RESET AND
REBUILD
for a better
Philippines in a post
pandemic world”



Green and Inclusive Recovery



Presented by Rosa T. Perez, Ph. D.
National Resilience Council &
Manila Observatory

OUTLINE



- Key messages from AR6 WG1
- Green/Blue Recovery and Inclusivity
- Opportunities for Green/Blue Recovery
- Strategy: Risk-informed sustainable development and resilient
- An example of a partnership for resilience and sustainability

Key Messages of WG1 AR6

Humans are causing climate change.

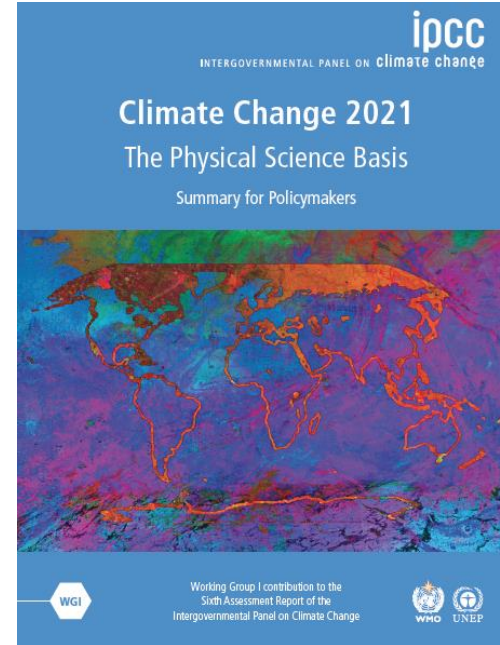
Temperatures will keep rising, without deep emission cuts.

Weather is getting extreme (more frequent, more intense)

Arctic summers could soon be free of ice by 2050.

Seas will rise no matter what.

We are running out of time.



Emissions reductions in 2020 associated with measures to reduce the spread of COVID-19

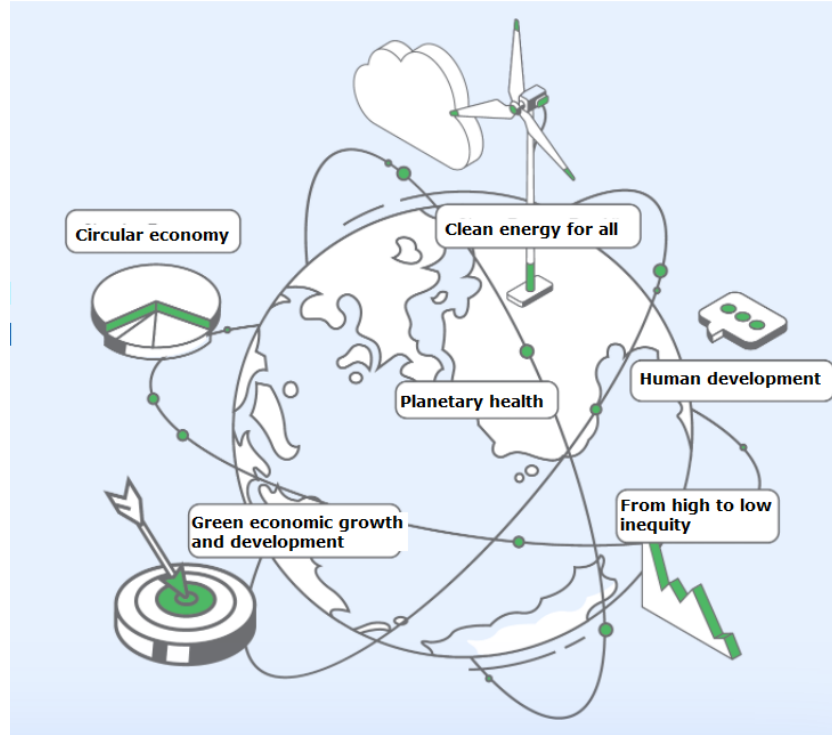
- **Global lockdown >>> large drop in emissions by ~27%, but.....**
- **Drop in CO₂ emissions had no detectable impact on atmospheric CO₂**



<https://www.cbsnews.com/news/earth-day-how-the-pandemic-is-changing-air-pollution-levels/>

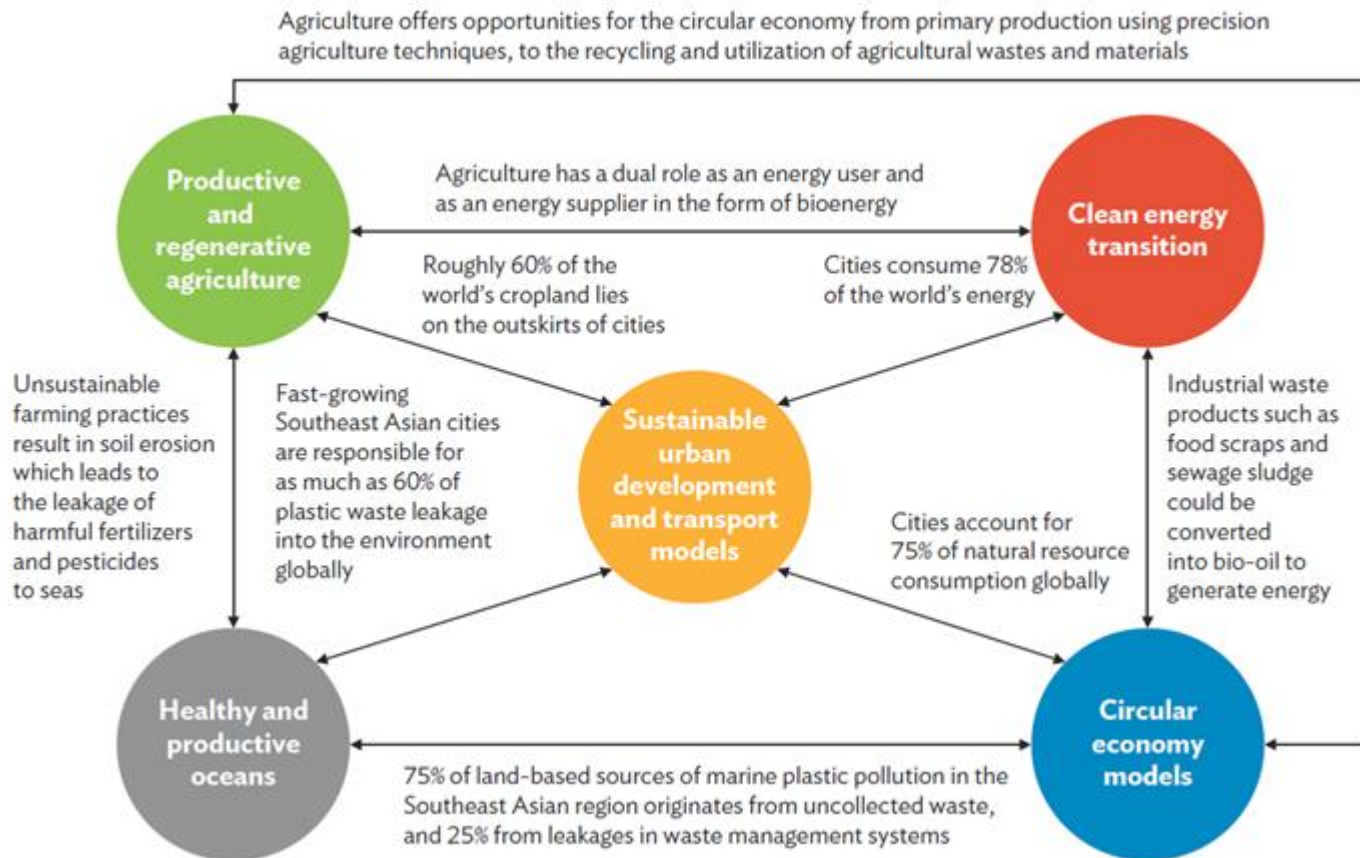
A green recovery and just transition

An economic recovery that includes people & communities and the planet.



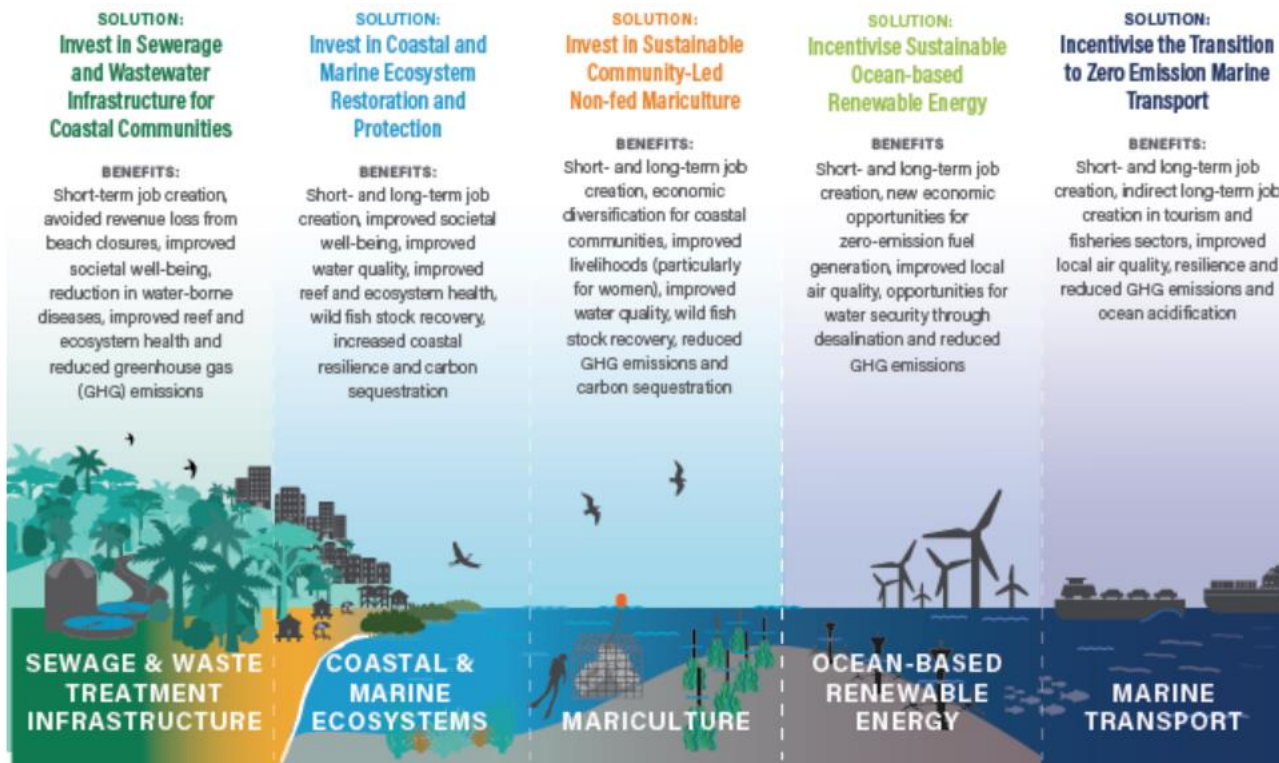
Green recovery is a widely adopted name for a proposed package of environmental, regulatory and fiscal reforms to recover prosperity after the COVID-19 pandemic

Five Green Growth Opportunities



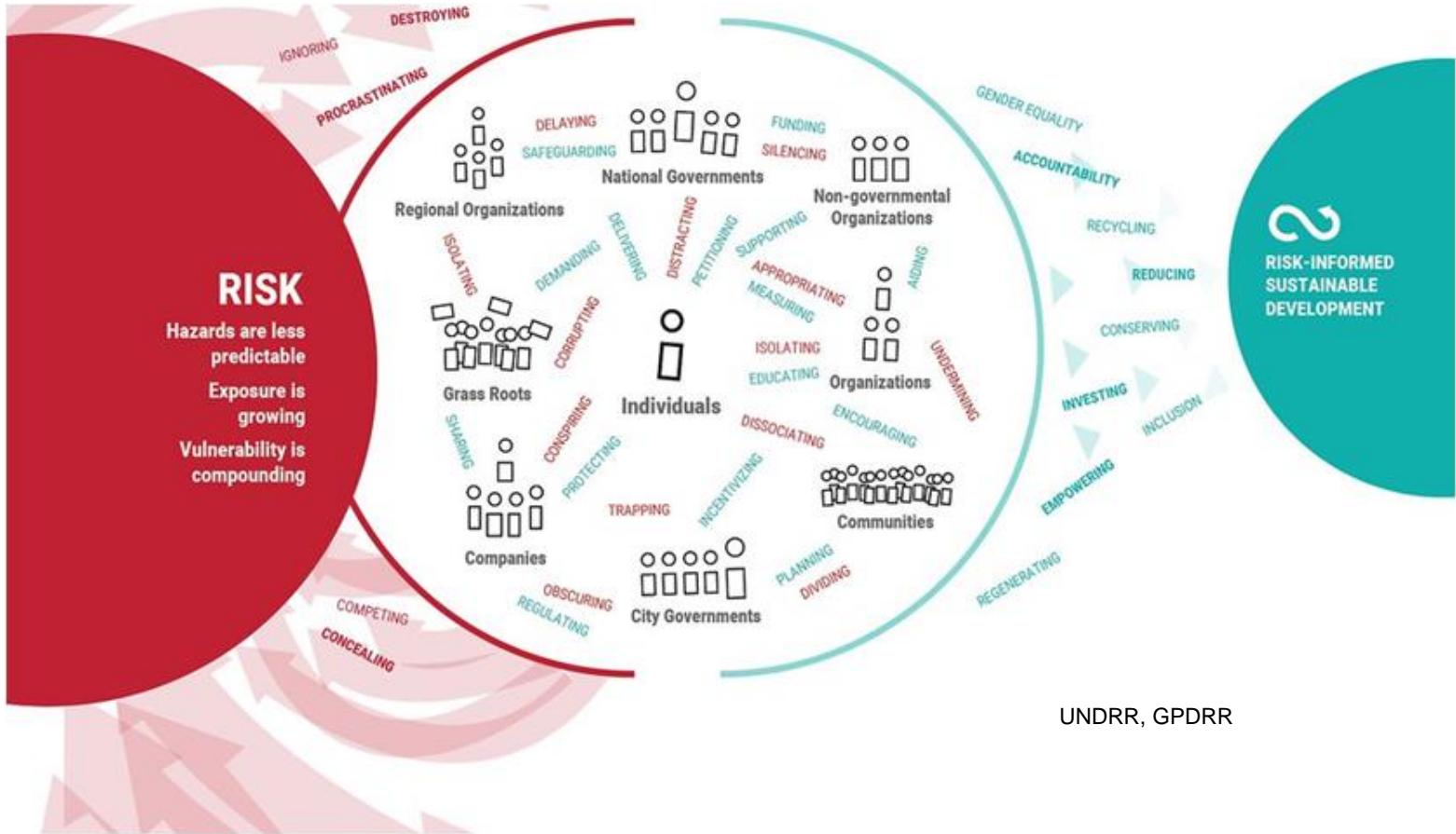
Sources: UN HABITAT; Ellen MacArthur Foundation; Proceedings of the National Academy of Sciences of the United States of America; Economic and Social Commission for Asia and the Pacific; Ernst and Young; Environment and Natural Resources Journal; National Ocean Service (United States); AlphaBeta analysis. As cited in ADB,2021. ADB Briefs-Implementing Green Recovery in SE Asia.. Manila , Philippines

Opportunities for Blue recovery



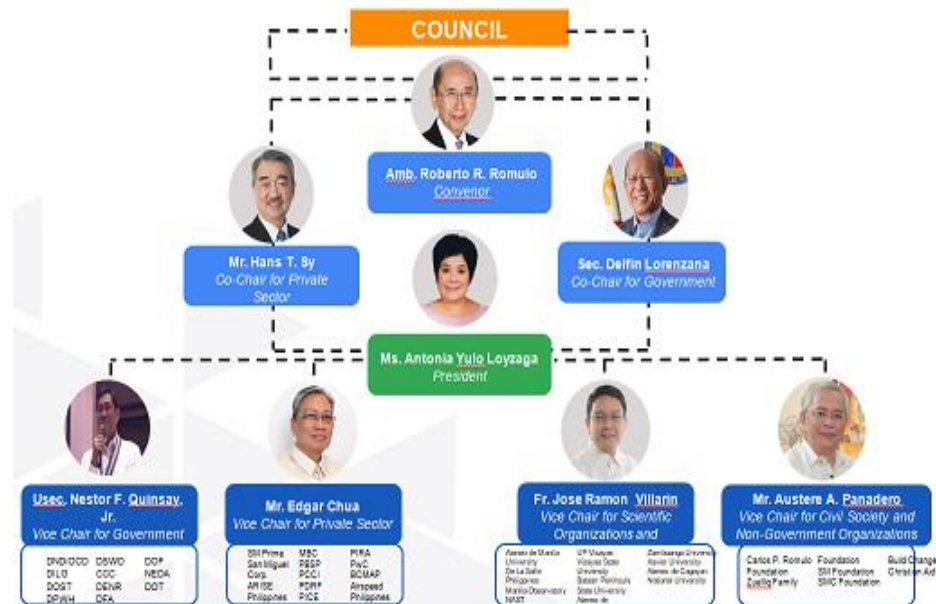
Northrop, E., et al. 2020. "A Sustainable and Equitable Blue Recovery to the COVID-19 Crisis." Report. Washington, DC: World Resources Institute. Available online at <http://www.oceanpanel.org/bluerecovery>

Strategy: Risk informed, resilient and inclusive sustainable development



UNDRR, GPDRR

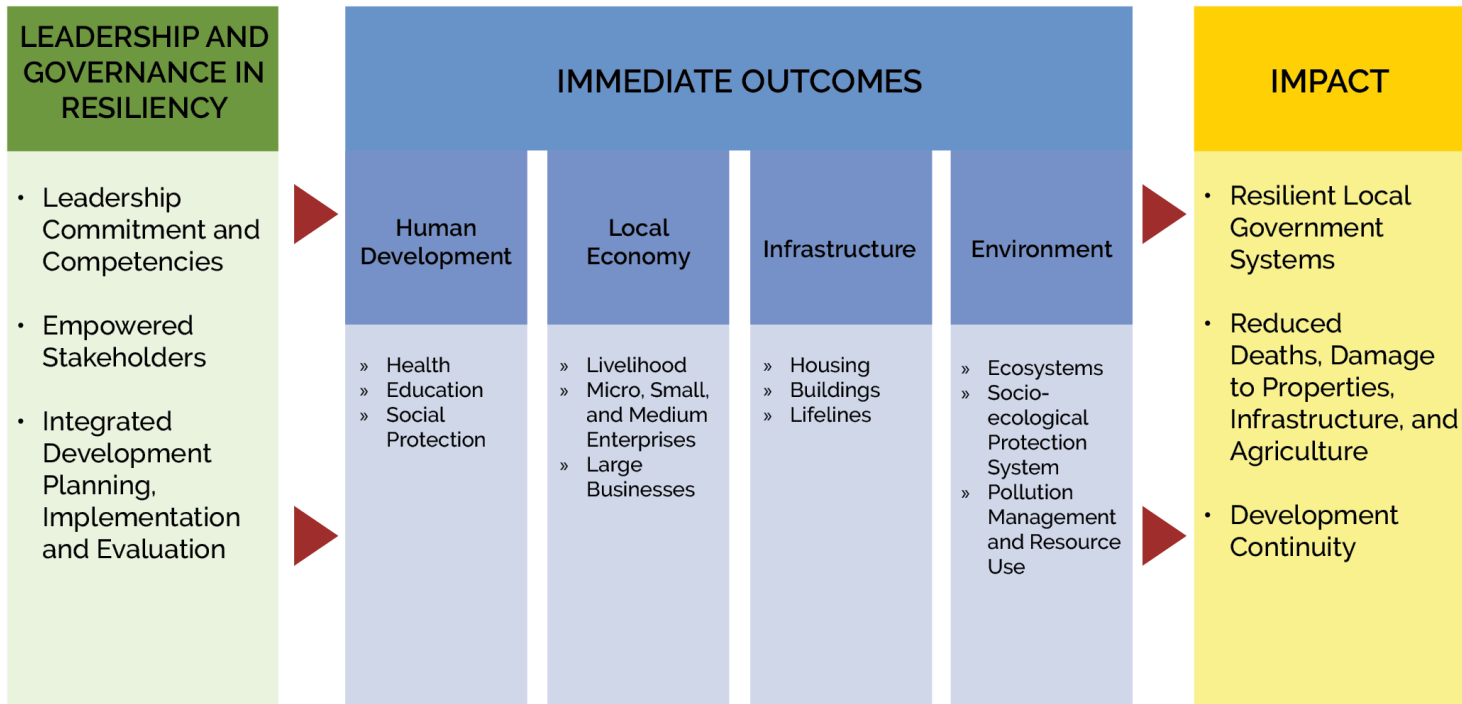
Organization



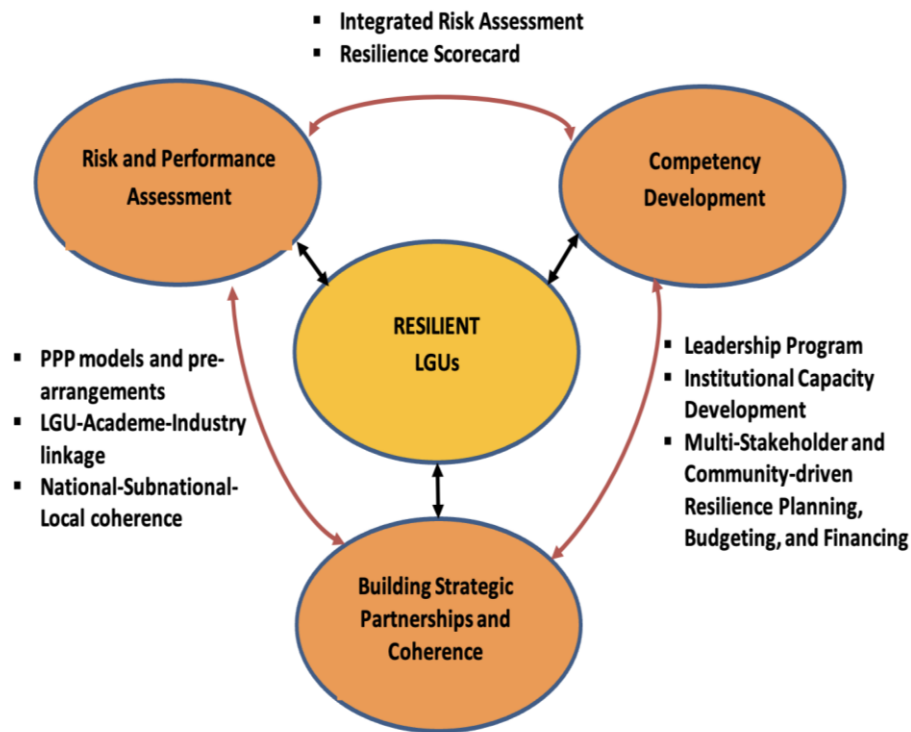
Multi-stakeholder Partnerships

Localized metrics co-designed & co-owned

THE RESILIENCE FRAMEWORK



Resilient LGU Program



Sendai Framework for Disaster Risk Reduction 2015 - 2030

SUSTAINABLE DEVELOPMENT GOALS



UNITED NATIONS
**PARIS CLIMATE
AGREEMENT**
SIGNING CEREMONY
— 22 APRIL 2016 —



3-year, 2-track Resilient LGU Program



PREPARE
(Baseline)
Ownership

How can we
minimize loss of
lives and assets?

ADAPT
(Institutionalize)
Co-ownership

How can we
improve existing
systems to reduce
risks?

TRANSFORM
(Implement)
Co-Creation

How can we change
existing systems to
achieve resilience
and sustainability

LEADERSHIP & GOVERNANCE

- Resilience Leadership Program Module 1 to Module 6
- NRC Coalition Workshop M1 to M6
- Practicum with Coaching




SCIENCE & TECHNOLOGY

- Year 1 - Climate and Disaster Risk Assessment
- Year 2 - Deepening Systems Thinking
- Year 3 - Solutions-Driven Action Research/ Choosing the Right Tools



Competency Development



Science – Policy – Practice			
	Academics	Research	Extension/Application
Physical, Social and Industrial Sciences	Core and Elective Subjects	Generation of Knowledge	CCAR APs+LGUs
CDRA/ Systems Dynamics	Certificate Course	Immersion, Training and Skills Enhancement	CCAR APs+LGUs+NRC
BA, BS, MA/MS MDRR	Degree Programs	Education, Training and co-generation of new knowledge	CCAR APs+LGUs+NRC
Institutionalization of Trans-disciplinary Action Research for Evidence-informed Decision Support Systems <div>    </div>			

Thank You