

Development Policy Research Month / Annual Public Policy Conference 2022

Messaging

DPRM/APPC THEME

**#CloseTheGap: Accelerate Post-pandemic
Recovery through Social Justice**

***#AlisinAngAgwat: Pabilisin ang Pag-ahon Mula sa
Pandemya sa Pamamagitan ng Katarungang
Panlipunan***

TARGET AUDIENCE OF THE DPRM

- Policymakers/Decisionmakers, Government
- Private sector
- Civil Society
- Academe/Research
- General public



ISSUE

- ❑ The COVID-19 pandemic has had an overwhelming impact on poverty and inequality, with vulnerable and marginalized groups (e.g., less educated individuals, vulnerable women, the elderly, persons with disabilities, displaced migrants, and indigenous peoples) bearing the brunt.
- ❑ These have magnified and exacerbated deep-seated structural inequities (social, political, economic, environmental).

PROMOTING SOCIAL JUSTICE AS A CORE PRINCIPLE IN ADDRESSING THE ISSUE

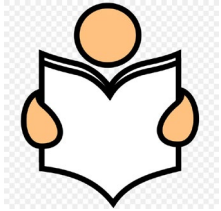
Social justice: ensuring the protection of equal access to liberties, rights, and opportunities, and taking care of the least advantaged members of society.



GENERAL MESSAGE

The COVID-19 pandemic highlighted and exacerbated existing socioeconomic disparities in the country and disproportionately affected the vulnerable and marginalized sectors of society. To make opportunities equitable, reduce socioeconomic and political inequalities, and remove cultural inequities, **let us make social justice a guiding principle of the post-pandemic recovery plan, particularly in the areas of human capital development and social protection, public health services and infrastructure, and environmental resilience.** Applying social justice in our policies, plans, and programs should be premised on **a holistic approach** that sees the organic and functional interrelationship between and among the different sectors of society and recognizes that the inequities experienced by vulnerable and marginalized groups affect the whole of society as these inequities hamper the attainment of broad-based, inclusive, and sustainable development.

SPECIFIC MESSAGES



Subtheme 1: Human capital development and social protection

1. Design learner-sensitive modes of education delivery that tackle the needs of low-income students; address the digital divide to increase their access to digital resources
2. Improve the design, targeting, and implementation of social protection programs
3. Develop a progressive budgeting paradigm that genuinely addresses social inequalities and push resources to people and places that need them most

SPECIFIC MESSAGES



Subtheme 2: Public health services and infrastructure

1. Ensure vulnerable and marginalized group's access to quality and affordable health services, including medicines, at all times
2. Increase investments in health programs that directly address the well-being of the population (e.g., programs on immunization, reproductive health, and communicable and noncommunicable diseases)
3. Adopt a lifecycle approach to health care (i.e., make quality health care accessible and affordable to all at every stage of life—from birth to old age)

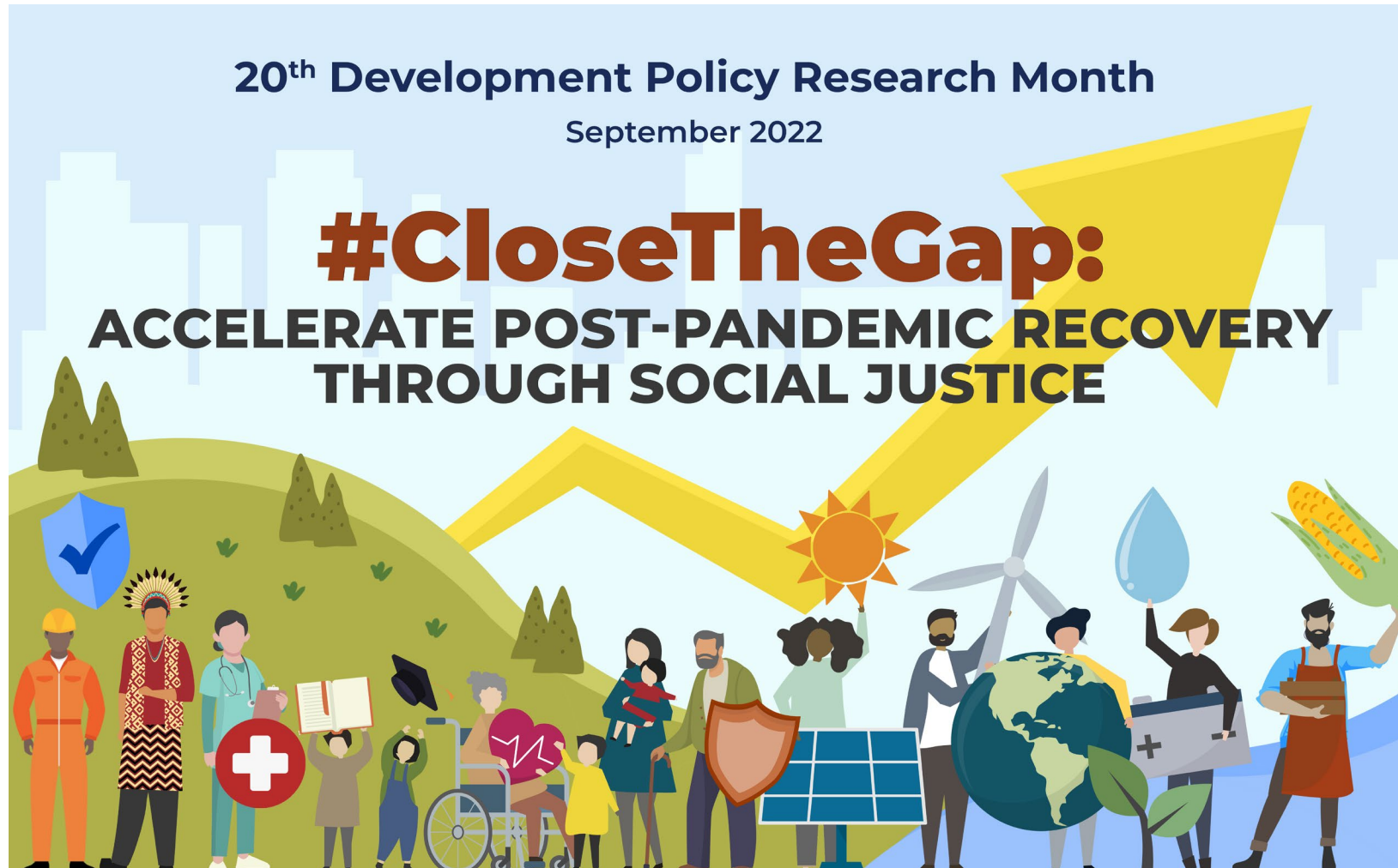
SPECIFIC MESSAGES



Subtheme 3: Environmental resilience and climate change

1. Protect local communities, including indigenous peoples, from environmentally destructive activities that violate their human rights and endanger their safety and well-being
2. Incorporate health and well-being in all policies and assess the potential impacts on health of proposed infrastructure, housing, and environmental projects
3. Boost the participation of vulnerable and marginalized groups in policy discourse and decisionmaking by strengthening government-civil society engagement and intensifying the use of bottom-up approaches

DPRM 2022 Banner



DPRM 2022 Banner (Filipino translation)





Service through
policy research

THANK YOU



/PIDS.PH



@PIDS_PH



www.pids.gov.ph

EMAIL: ssiar@mail.pids.gov.ph