

Inputs and Comments to the PIDS Public Webinar on the “*Bridging the Skills Gap: Insight and Strategies for the Evolving Philippine Labor Market*”

Executive Director Jeanette T. Damo
Institute for Labor Studies





Labor and Employment Plan

2023-2028

Priorities, Outcomes, and Strategies

Key sectoral outcome:
increased income-earning ability
of Filipinos



LEP Priority 1

Maximizing Productive,
Remunerative, Freely
Chosen, and Sustainable
Work and Employment
Opportunities



LEP Priority 2

Ensuring Labor Governance that respects all
Fundamental Principles and Rights at Work, International
Labor Standards and Human Rights



LEP Priority 3

Building an Equitable and
Inclusive Social Protection

Labor Market Information Services

Expanding Access to Employment Opportunities

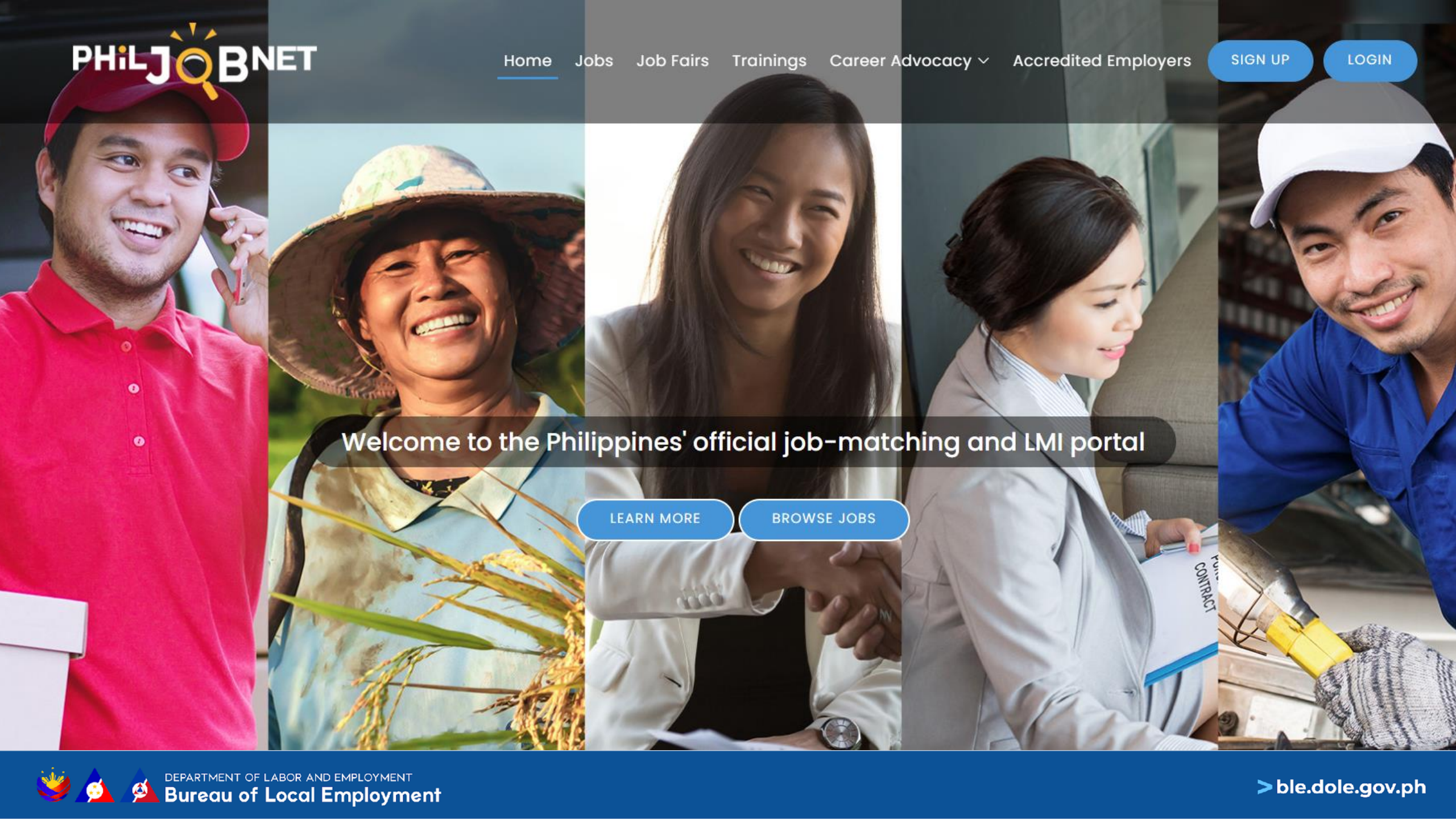
Providing Timely and Accurate Labor Market Information Services



NATIONAL SKILLS
REGISTRATION PROGRAM



CareerInfoPH



Welcome to the Philippines' official job-matching and LMI portal

[LEARN MORE](#)

[BROWSE JOBS](#)



Are you confused what career to take?

e.g. Job Title, Skills, etc.

Search Now

GREEN JOBS





Welcome to the DOLE Establishment Report System



Department Order No. 165,
Series of 2017

OBJECTIVE

- Maintain a continuing nationwide database of displaced workers based on Establishment Reports submitted to the DOLE Regional Offices

CLIENTS

- Jobseekers
- Employers
- Youth and Students
- Education Institutions
- National Government Agencies
- Groups in Vulnerable Situations





LABOR MARKET INFORMATION

Department Order No. 165,
Series of 2017

OBJECTIVE

- Provide timely relevant and accurate signals on the current labor market such as in-demand jobs and skills shortages

CLIENTS

- Jobseekers
- Employers
- Youth and Students
- Education Institutions
- National Government Agencies
- Groups in Vulnerable Situations

Download at ble.dole.gov.ph.

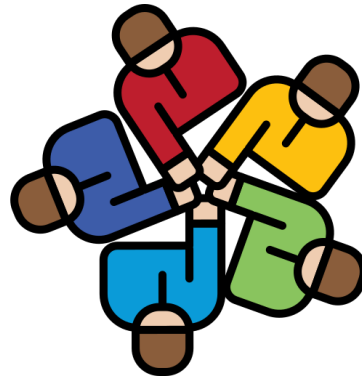


Insights on Institutional arrangements and collaborations

It is essential to establish meaningful, ongoing collaborations among government, employers, and workers. **Such collaboration must go beyond mere consultation**; it requires that the inputs and perspectives of all stakeholders are actively integrated into the LMIS. **Identifying potential entry points for this collaboration is crucial.**



Utilization of Industry
Tripartite Councils
(ITCs)



Collaboration with the
TESDA's Industry
Boards



Establishments of
Sector Skills
Councils (SSCs)

Insights on Institutional arrangements and collaborations

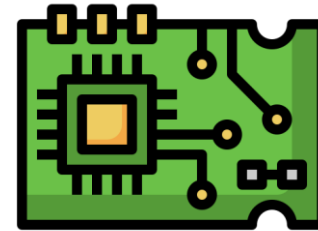
In partnership with industry associations, AFW is actively supporting the formation of SSCs in several key sectors:



**Analytics and
Artificial Intelligence**



**Fruit and Vegetable
Processing**



**Semiconductor and
Electronics**



Healthcare

Insights on Data and Partnerships

Drawing inspiration from the good practices observed in the countries cited in the study, one immediate recommendation we can look into is **to establish partnerships between the government and Digital Labor Market Intermediaries (DLMIs) such as JobStreet, Kalibrr, and LinkedIn**. These partnerships can support the data-intensive and real-time information needs of the LMIS in the following ways:



Data sharing agreements



Collaborative research initiatives



Enhanced job matching



Skills mapping



Public awareness campaigns and Feedback mechanisms

Insights on Data and Partnerships



Philippine Qualifications Framework



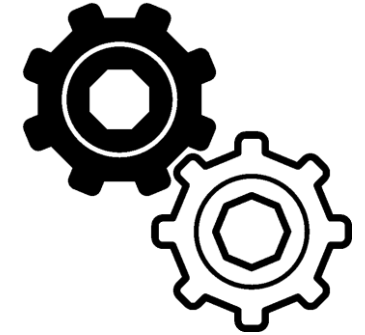
Philippine Skills Framework



Digital Workforce Competitiveness Act Working Group



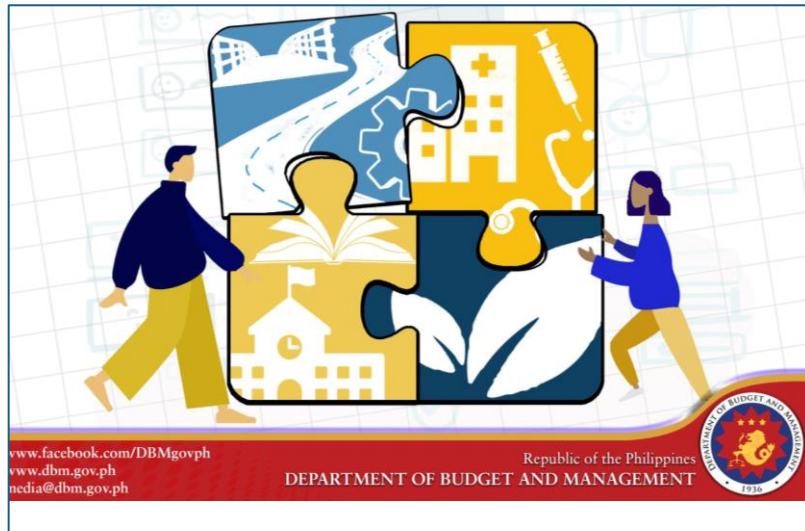
Inter-Agency Technical Working Group on Green Jobs



National Innovation Council

Insights on Support

On the provision of continuous support to sustain the LMIS and SAPSR, the authors may want to explore the inclusion of the following:



Program Convergence Budgeting for Livelihood and Employment Program



Philippine-UN Sustainable Development Cooperation Framework (UNSDCF)



Republic Act No. 10691
DOLE Department Order No. 157,
Series of 2016



bit.ly/DOLE-PESO

OBJECTIVE

- Provides the package of services which matches people to jobs, helps employers find the workers they need, and aligns labor market and skills needs across the economy.

CLIENTS

- Jobseekers
- Employers
- Students
- Youth
- Migrant Workers
- Persons with Disabilities
- Long-Term Unemployed
- Displaced Workers
- Senior Citizens
- Indigenous Peoples
- Graduates of Education Institutions



THANK YOU

JEANETTE T. DAMO

Executive Director
Institute for Labor Studies



3F MegaOne Building, Espana Blvd. cor.
Mayon St., Santa Teresita, Quezon City



(02) 8527-3456



ils.dole.gov.ph



jtdamo@dole.gov.ph



facebook.com/ilsdoleofficial