



FROM FURY TO JUSTICE: INCLUSIVE GRASSROOT INNOVATION AND DATA-DRIVEN HEALTH MANAGEMENT TOWARDS POLICY-MAKING

Gernelyn T. Logrosa, Ph.D.

Research Head, Mapúa Malayan Colleges Mindanao
Project Leader, AMDABiDSS-Health Project RESILIEMC

May Anne E. Mata, Ph.D.

Professor 1 & University Scientist, University of the Philippines Mindanao
Program and Project Leader, AMDABiDSS-Health Project PPASTOL

8th Mindanao Policy Research Forum (MPRF)

#CloseTheGap: Accelerating post-pandemic recovery through social justice

28 September 2022

THE FURY

THE FURY

Date: 28 Sep 2022 **8th Mindanao Policy Research Forum (MPRF):** From Fury to Justice: Inclusive Grassroot innovation and Data-Driven Health Management Towards Policy-Making



Coronavirus



RABIES: ZERO 2020- PROTECT SELF AND ACHIEVE ZERO BITES



<https://www.reuters.com/world/asia-pacific/philippines-ease-some-tough-covid-19-restrictions-monday-2021-04-11/>

<https://doh.gov.ph/node/11253>

<https://www.pna.gov.ph/articles/1160678>

<https://ejmo.org/pdf/Double%20Trouble%20Challenges%20of%20Cancer%20Care%20in%20the%20Philippines%20during%20the%20COVID19%20Pandemic-46287.pdf>



Republic of the Philippines

PHILIPPINE NEWS AGENCY



HOME NATIONAL PROVINCIAL OPINION BUSINESS FEATURES HEALTH FOREIGN SPORTS TRAVEL ENVIRONMENT SCITECH

Don't neglect cardiovascular diseases, diabetes: groups

By Ma. Cristina Arayata

November 23, 2021, 7:01 pm

Share [Share 0](#) [Twitter](#) [Facebook](#) [Email](#)



DOI: 10.14744/ejmo.2020.46287

EJMO 2020;4(2):135–136

Letter to the Editor



Double Trouble: Challenges of Cancer Care in the Philippines during the COVID-19 Pandemic

[Frederic Ivan L. Ting](#), [Gracieux Y. Fernando](#)

Division of Medical Oncology, Department of Medicine, University of the Philippines - Philippine General Hospital, Manila, Philippine

100% of COVID ICU beds in Davao City's SPMC full due to surge

By **ANTONIO L. COLINA IV** - MAY 25, 2021 10:16 PM

DAVAO CITY (MindaNews / 25 May) — The COVID-19 beds of the state-owned Southern Philippines Medical Center (SPMC) are either fully occupied or nearly all occupied due to a surge in cases.

All its 35 intensive care unit (ICU) beds (100%) and 273 of its 292 were reported to be occupied as of 12 noon on May 24, the SPMC pos page.



**DISMISS
DISINFORMATION**

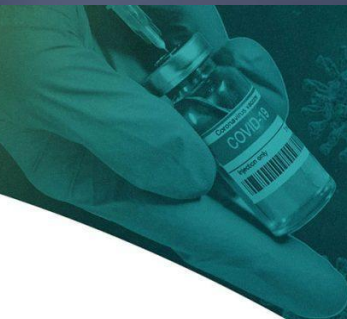


#FYTCOVID19:

Fighting Vaccine Misinformation

A fact-checking initiative for student and community journalists

January 28-29, 2022 | FRIDAY to SATURDAY | 10:00 am - 12:00 pm
LIVE on the YouTube channel of FYT



virus



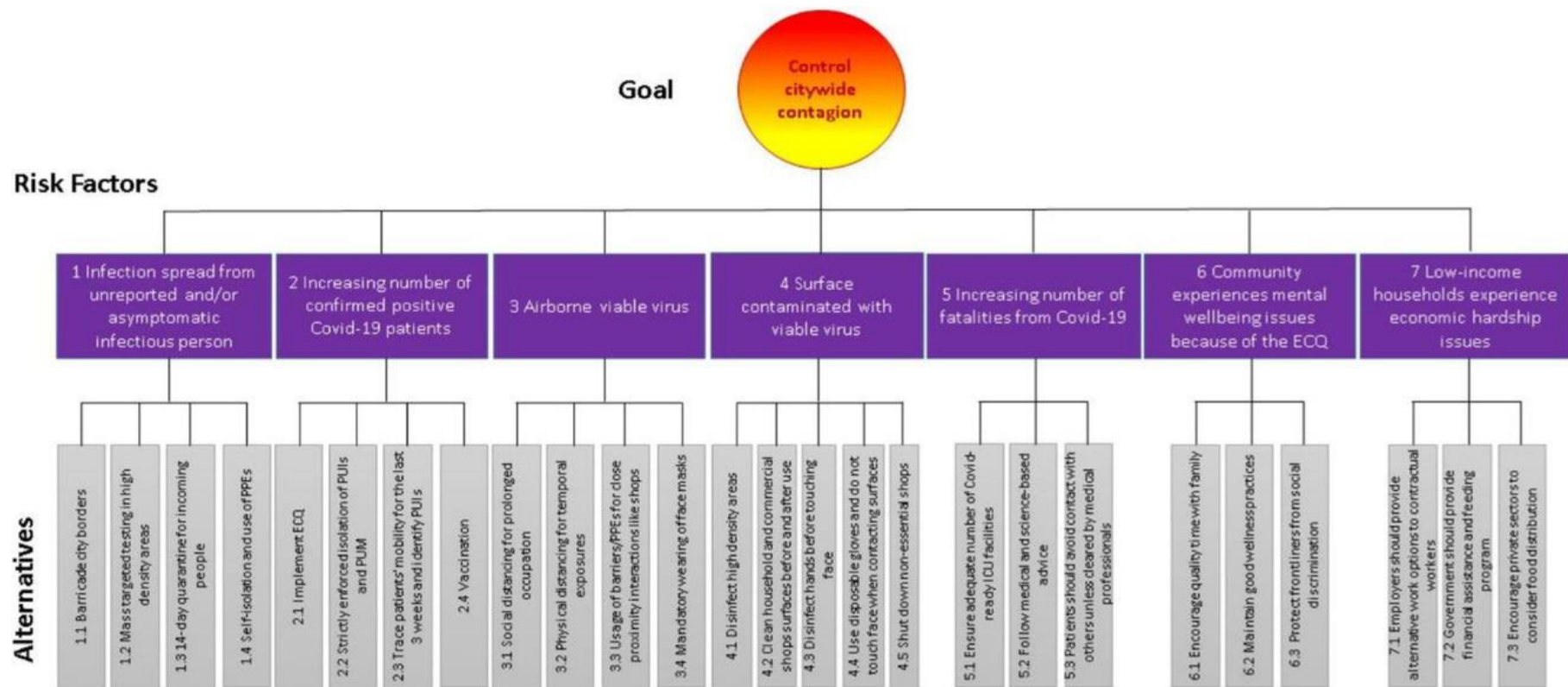
#workingPCOO #DismissDis www.pcoo.gov.ph @pcoogov

https://www.google.com/url?sa=i&url=https%3A%2F%2Fops.gov.ph%2Fnews_releases%2Fstatement-by-presidential-communications-secretary-martin-andanar-on-fake-news-circulating-online-claiming-pres-duterte-is-using-covid-19-vaccines-to-depopulate-the-philippines&psig=AOvVaw3sOtYyzR5hliwBoLq1MOAU&ust=1664270708672000&source=images&cd=vfe&ved=0CAwQIRxgFwoTCIC_vNj8sPoCFQAAAAAAdAAAAABAD
https://www.google.com/url?sa=i&url=https%3A%2F%2Fwww.adobomagazine.com%2Fpress-releases%2Fbrand-business-fyt-media-google-go-local-to-fight-vaccine-misinformation%2F&psig=AOvVaw3sOtYyzR5hliwBoLq1MOAU&ust=1664230709672000&source=images&cd=vfe&ved=0CAwQIRxgFwoTCIC_vNj8sPoCFQAAAAAAdAAAAABAZ

[illegible]

COVER 10 DOUGLASS

[illegible]



Integrating Risk Assessment and Decision-Making Methods in Analyzing the Dynamics of COVID-19 Epidemics in Davao City, Mindanao Island, Philippines



Gernelyn Logrosa, PhD



May Anne Mata, PhD



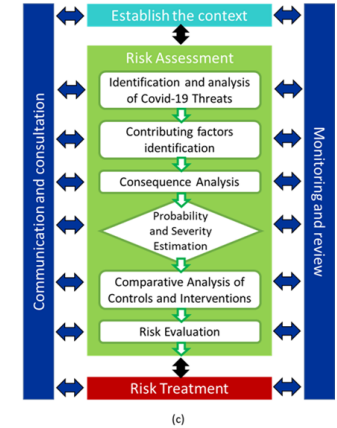
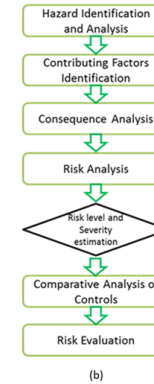
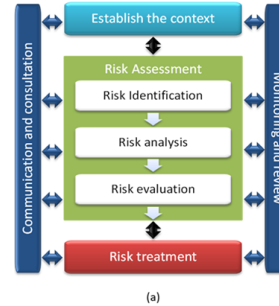
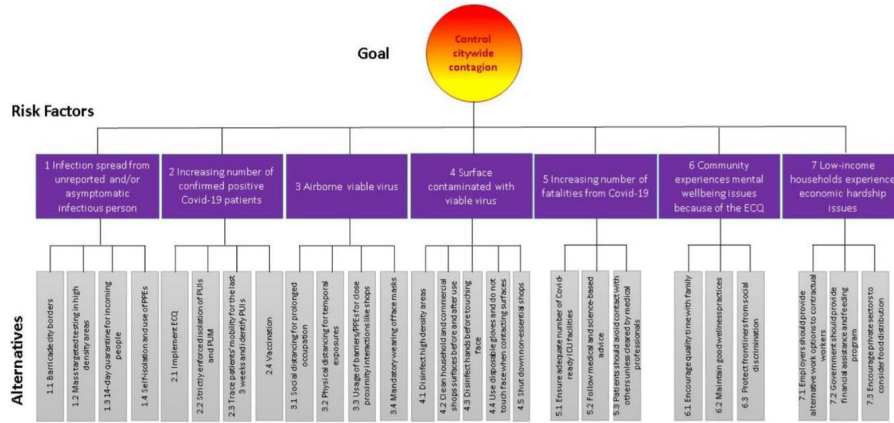
Zythron Paul Lachica



Leo Manuel Estaña, MSc



Maureen Hassal, PhD



RISK MANAGEMENT PROCESS

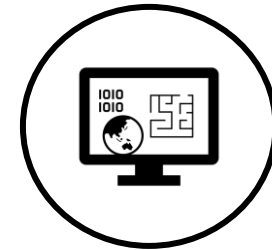
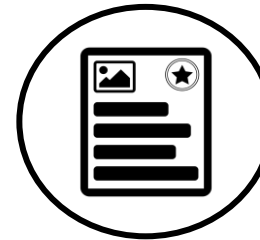
(ISO 31000)

RISK IDENTIFICATION

RISK ANALYSIS

RISK EVALUATION

RISK TREATMENT



RISK MANAGEMENT PROCESS

(ISO 31000)

RISK IDENTIFICATION

structured process to identify and assess the risks we are dealing with on a day-to-day operation.

RISK ANALYSIS

RISK EVALUATION

RISK TREATMENT



RISK MANAGEMENT PROCESS

(ISO 31000)

RISK IDENTIFICATION

RISK ANALYSIS

- understanding the sources and causes of the identified risks

RISK EVALUATION

RISK TREATMENT



RISK MANAGEMENT PROCESS

(ISO 31000)

RISK IDENTIFICATION

RISK ANALYSIS

RISK EVALUATION

-comparing risk analysis results with risk criteria to determine whether the residual risk is tolerable.

RISK TREATMENT



RISK MANAGEMENT PROCESS

(ISO 31000)

RISK IDENTIFICATION

RISK ANALYSIS

RISK EVALUATION

RISK TREATMENT

-changing the magnitude and likelihood of consequences, both positive and negative, to achieve a net increase in benefit.



RISK IDENTIFICATION

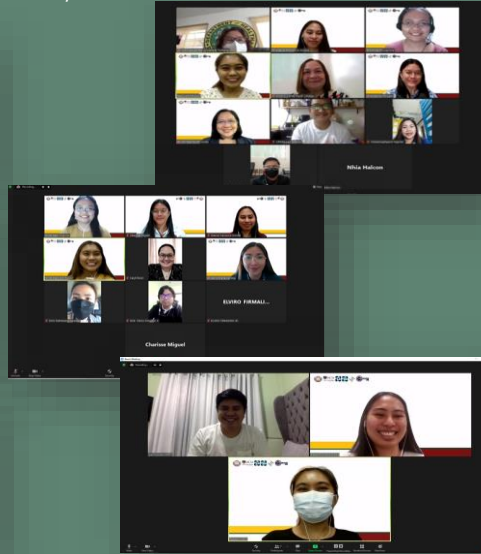


RESILIEMC

Field Works



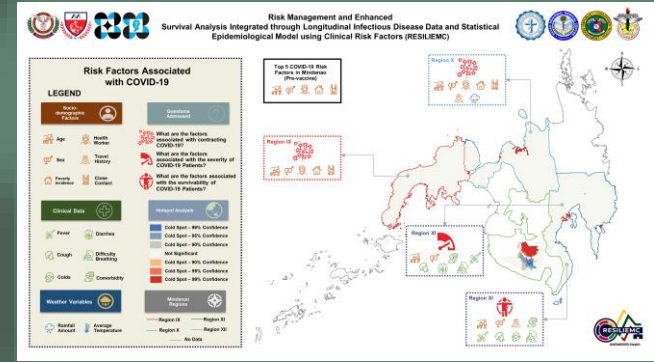
FGD/KII



Data Providers and partners



Identification of risk factors associated with COVID-19



Date: 28 Sep 2022

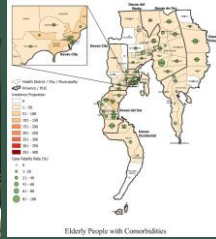
8th Mindanao Policy Research Forum (MPRF): From Fury to Justice: Inclusive Grassroot innovation and Data-Driven Health Management Towards Policy-Making



RISK IDENTIFICATION

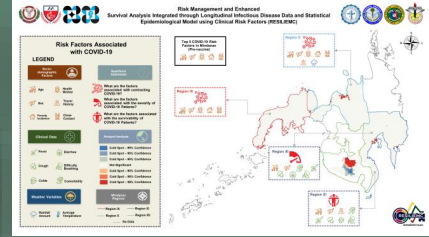


PPASTOL



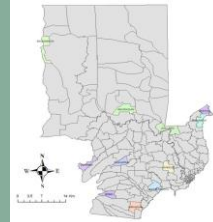
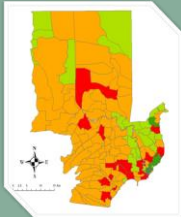
A Glimpse of the COVID-19 Threat to the Vulnerable Population of Davao Region, Philippines from March 2020 to August 2021

RESILIEMC



VATAS

Vulnerability index calculations for EMERGING INFECTIOUS DISEASES (EIDs)



iWAS

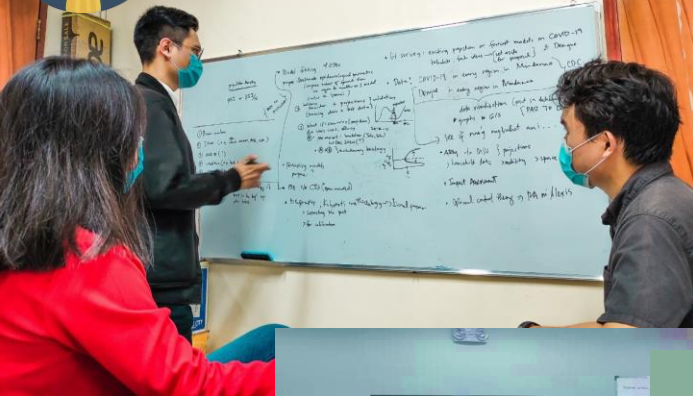


Wastewater surveillance protocol for COVID-19





PPASTOL



iWAS



RESILIEMC



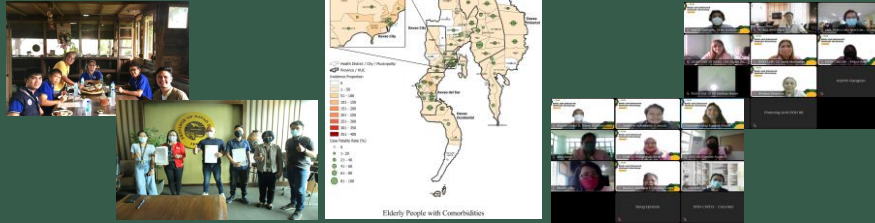
VATAS



RISK IDENTIFICATION



PPASTOL



A Glimpse of the COVID-19 Threat to the Vulnerable Population of Davao Region, Philippines from March 2020 to August 2021

RESILIEMC



VATAS

Vulnerability index calculations for Emerging Infectious Diseases (EIDs)



iWAS



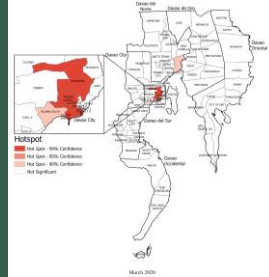
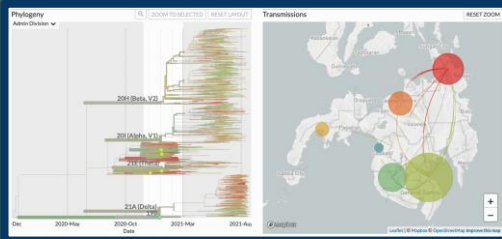
Wastewater surveillance protocol for COVID-19



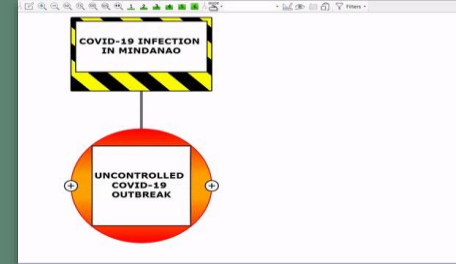
RISK ANALYSIS



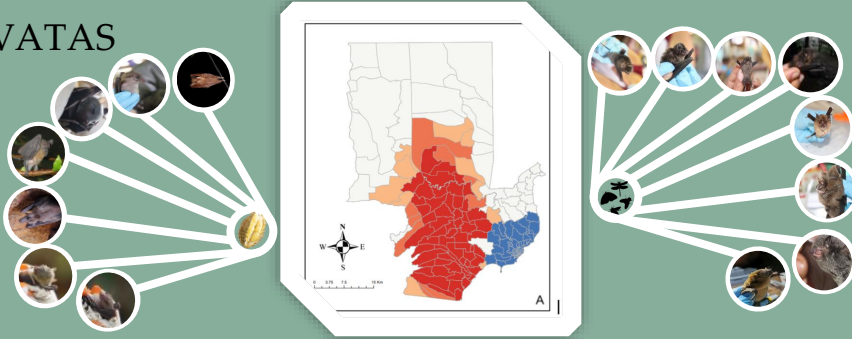
PPASTOL



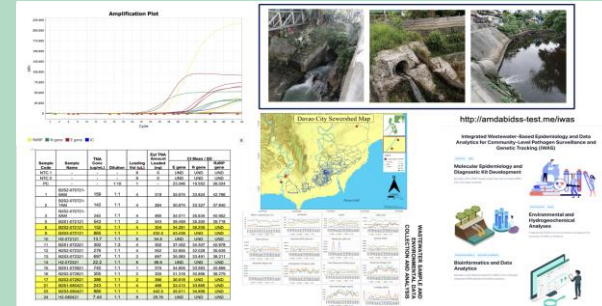
RESILIENCE



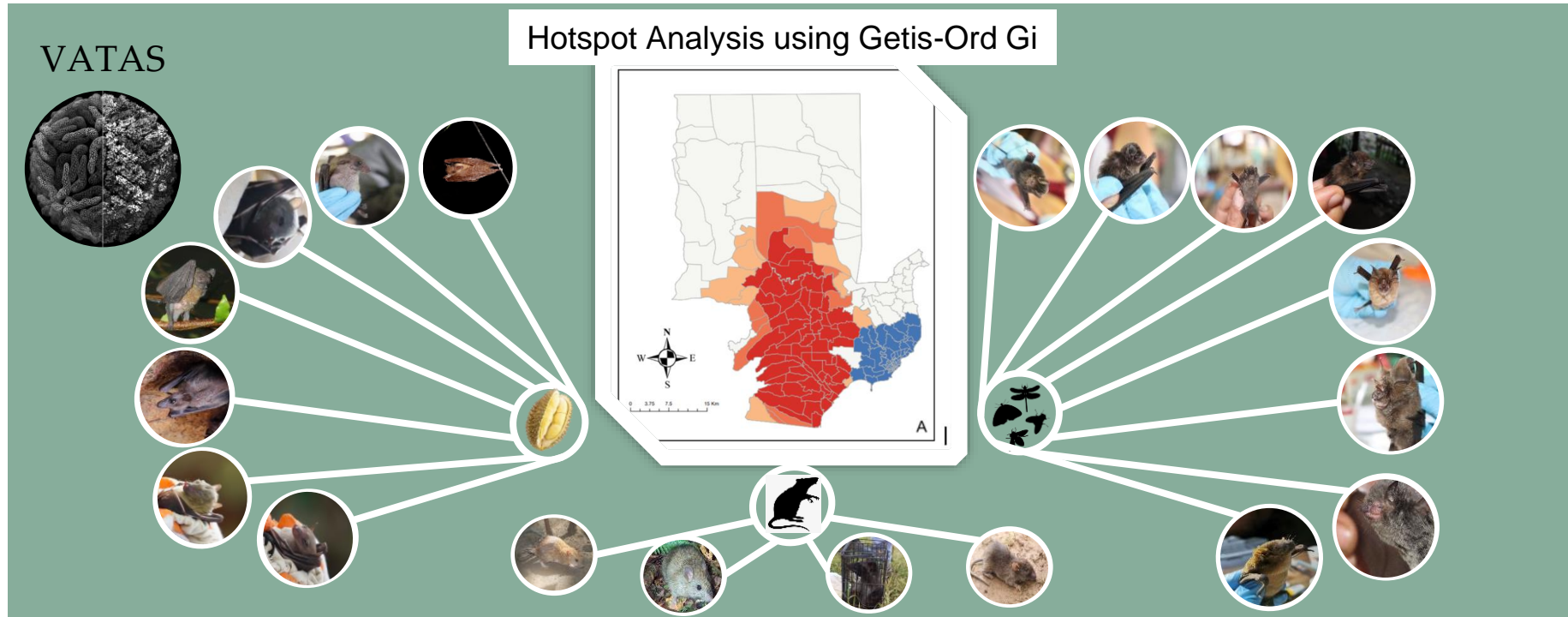
VATAS



iWAS



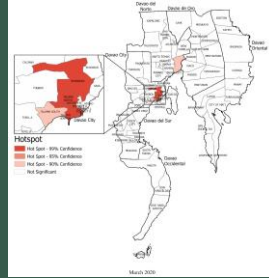
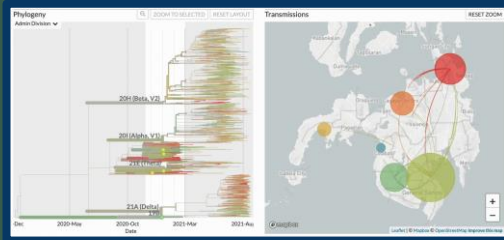
RISK ANALYSIS



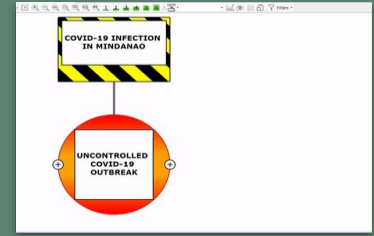
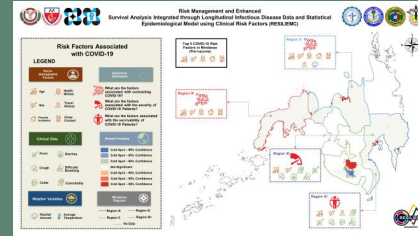
RISK ANALYSIS



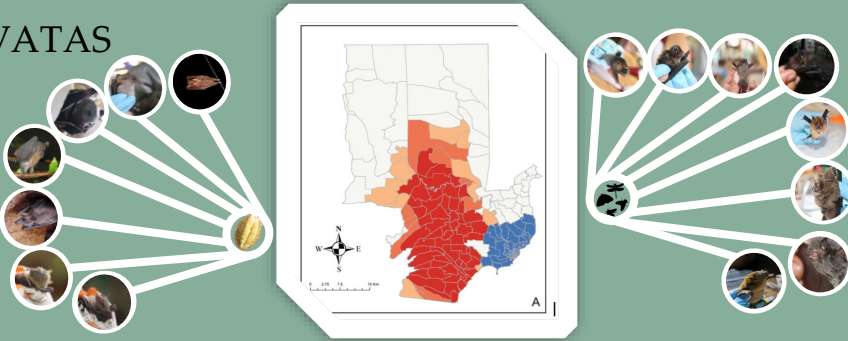
PPASTOL



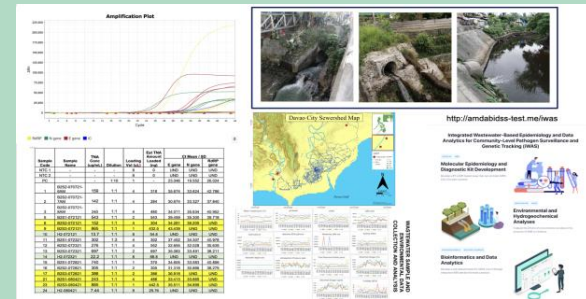
RESILIEMC



VATAS



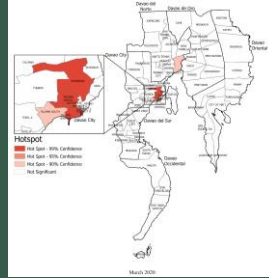
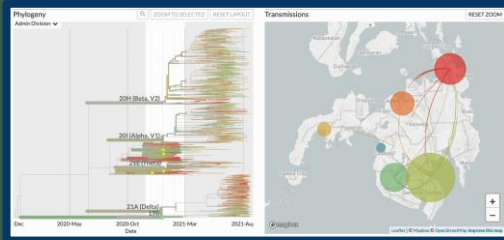
iWAS



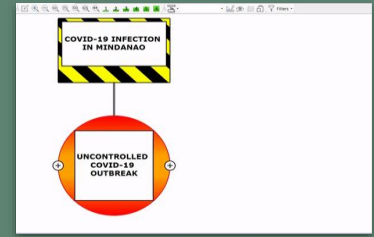
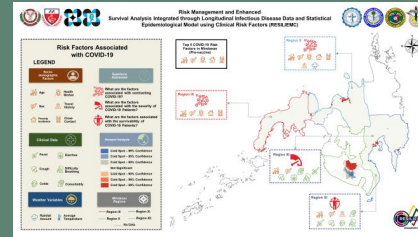
RISK ANALYSIS



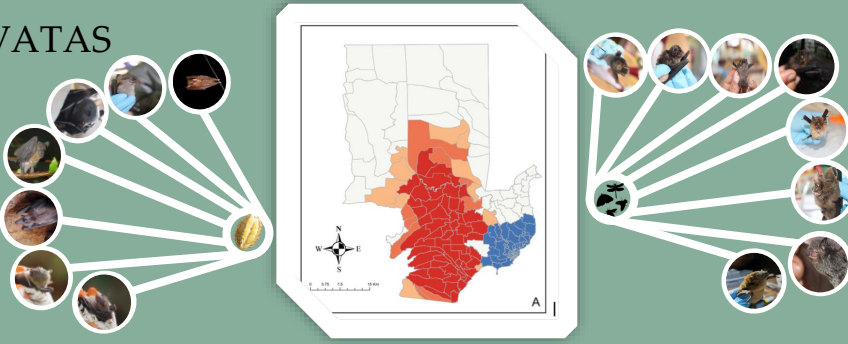
PPASTOL



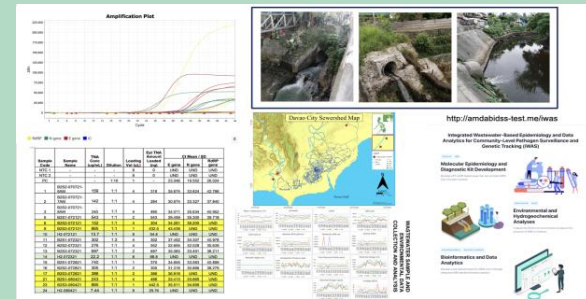
RESILIEMC



VATAS



iWAS



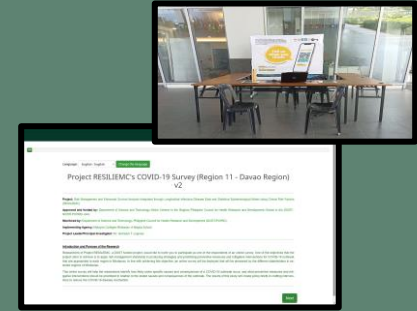
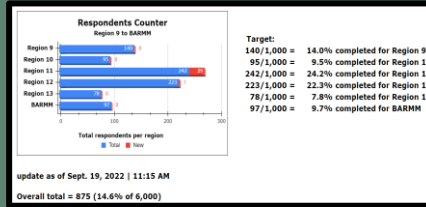
RISK EVALUATION



PPASTOL



RESILIEMC

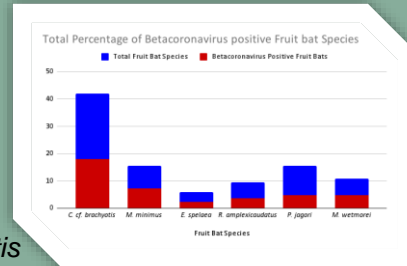


VATAS

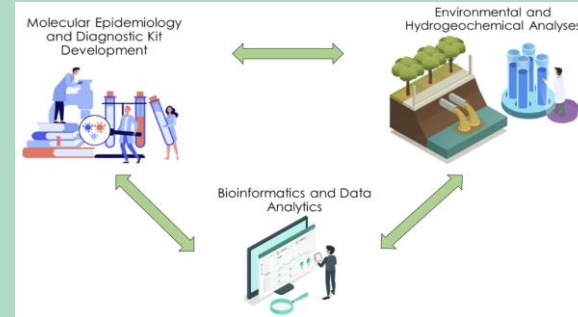
Total number of Bats: 83 fruit bats

Positivity Rate: 40%

Highest BetaCoV's species prevalence: *C. cf. brachyotis*



iWAS



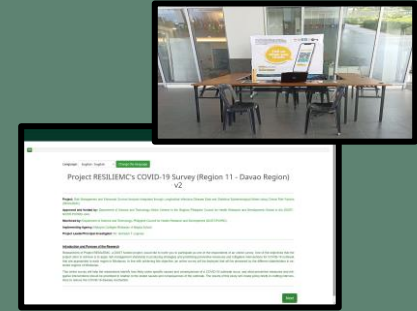
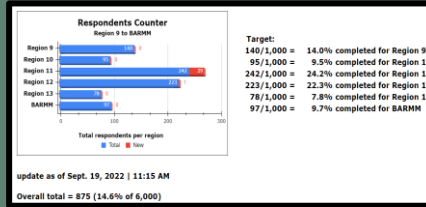
RISK EVALUATION



PPASTOL



RESILIEMC

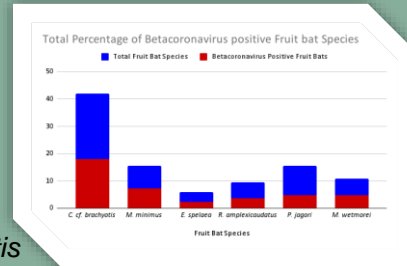


VATAS

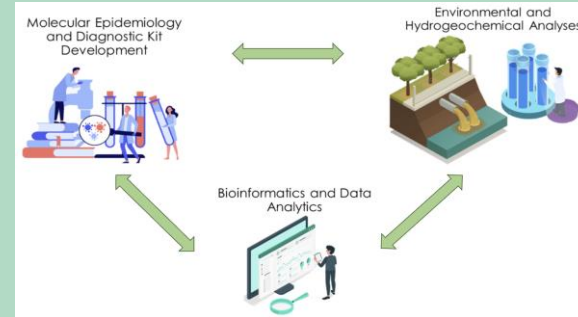
Total number of Bats: 83 fruit bats

Positivity Rate: 40%

Highest BetaCoV species prevalence: *C. cf. brachyotis*



iWAS



RISK TREATMENT

THE JUSTICE

THE JUSTICE



[DESCRIPTIVE](#)
[DIAGNOSTIC](#)
[PREDICTIVE](#)
[PRESCRIPTIVE](#)

DiWa: Disease Watch

A virtual planning tool and integrative platform
to empower decision-makers
for pandemic management in Mindanao.



Data Analytics



Spatiotemporal Maps



Agent-Based Modeling



Genome-based Epidemiology



Forecasts



Vaccination Rollout System



Triaging

Date: 28 Sep 2022

8th Mindanao Policy Research Forum (MPRF):
From Fury to Justice: Inclusive Grassroot innovation and Data-Driven Health
Management Towards Policy-Making





Center for Applied Modeling, Data Analytics, and Bioinformatics
for Decision Support System in Health

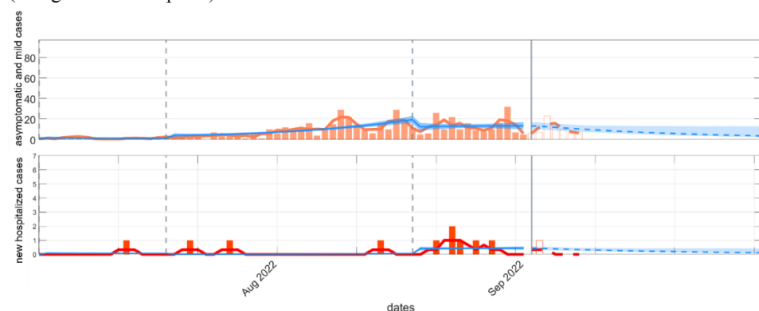
Predictive Modeling and Viral Phylodynamic Analysis On the Spatial and
Temporal Patterns of Disease Outbreaks with Considerations for Control and Logistics
Applied in Mindanao Region

Situational Report No. 63

Time-varying Reproduction Number in Davao Region and its Provinces
(Including Davao City) as of 10 September 2022

Transparency Note

The image below is an example from one of the fitting procedures the team has made. It shows that the epidemiology model (blue curve) fits well and captures the trend of the actual data (orange curve and spikes).



Supplemental Fig. 1. Model fit to the reported COVID-19 cases from July 03, 2022- September 02, 2022, and 30-day projections of COVID-19 cases in Davao del Norte.

Date: 28 Sep 2022
8th Mindanao Policy Research Forum (MPRF):
From Fury to Justice: Inclusive Grassroot innovation and Data-Driven Health
Management Towards Policy-Making

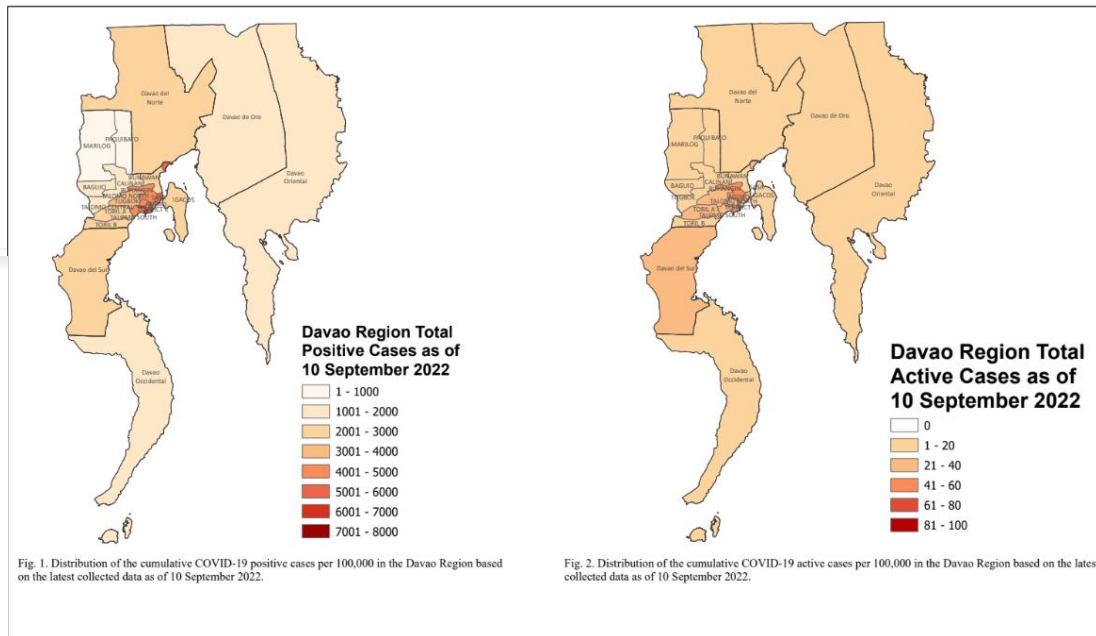


Fig. 1. Distribution of the cumulative COVID-19 positive cases per 100,000 in the Davao Region based on the latest collected data as of 10 September 2022.

Fig. 2. Distribution of the cumulative COVID-19 active cases per 100,000 in the Davao Region based on the latest collected data as of 10 September 2022.





Forecasts



JAYVE IAY ▾

Active Cases

Mild/Asymptomatic

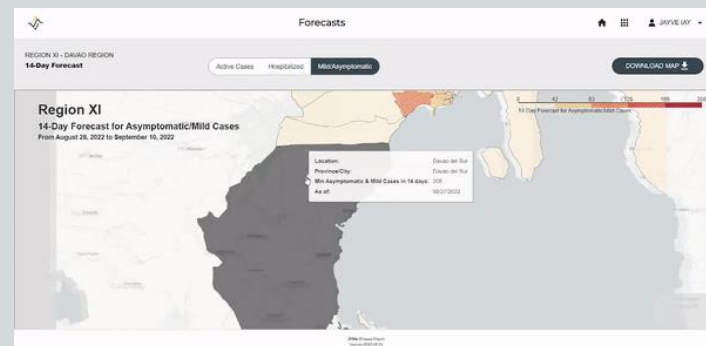
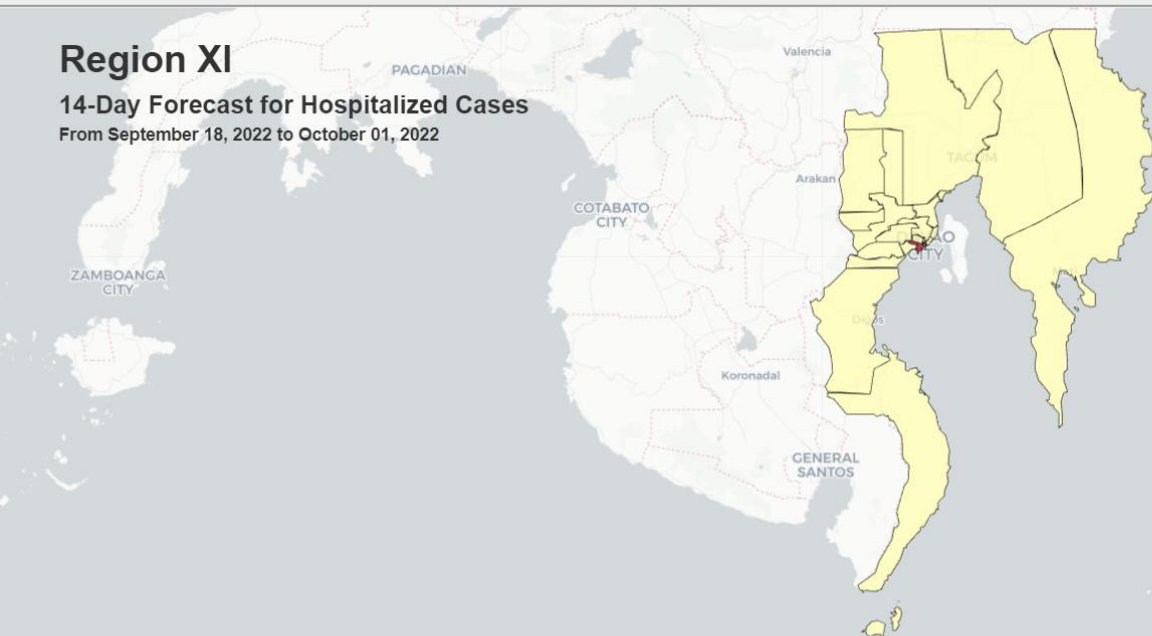
Hospitalized

DOWNLOAD MAP

Region XI

14-Day Forecast for Hospitalized Cases

From September 18, 2022 to October 01, 2022



DIWa: Disease Watch
Version 2022.09.01

Date: 28 Sep 2022

8th Mindanao Policy Research Forum (MPRF):
From Fury to Justice: Inclusive Grassroot innovation and Data-Driven Health Management Towards Policy-Making





Success Welcome Johanna to AMDABiDSS Vaccination Rollout System



OPEN VACCINE STATIONS

“What to open?”

PROCEED



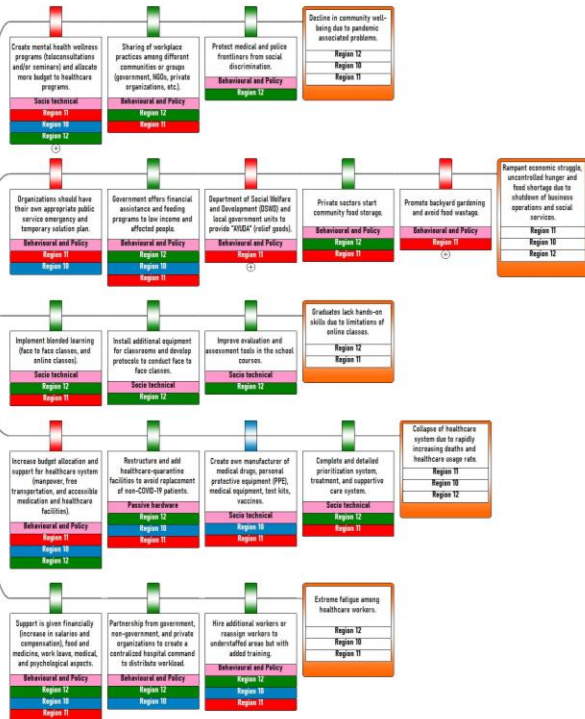
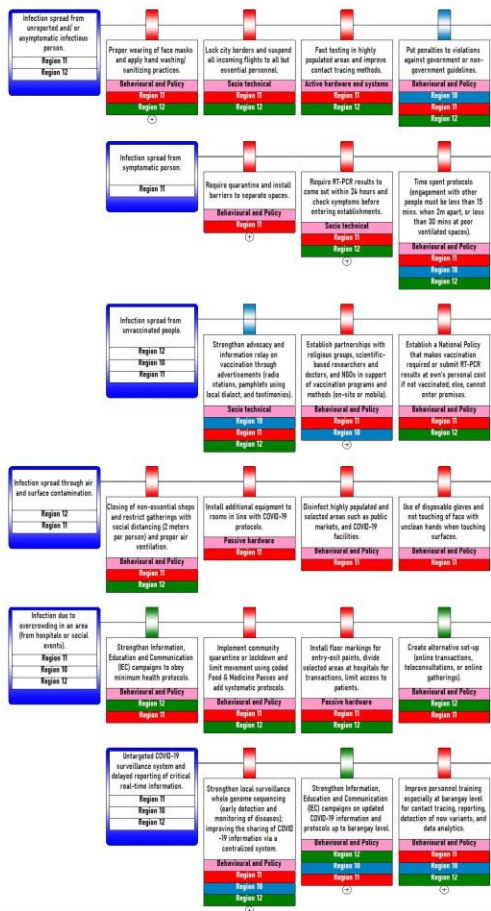
CREATE VACCINATION SCHEDULE

“Who, when and where?”

PROCEED

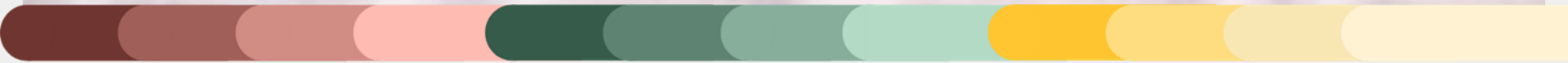


Legend:



Coronavirus

ng the industries
large percentage of cases
government has been
in response to the
the health system





1 REGION

2 PATIENT INFORMATION

3 CLINICAL INFORMATION

4 HAZARD RATIO

SELECT REGION ▼

[Empty]

NEXT →



AGE ▾	AGE-GROUP-3 [18 - 29 YEARS OLD]
SEX ▾	FEMALE
HEALTH WORKER ▾	NO
KNOWN CLOSE CONTACT ▾	YES

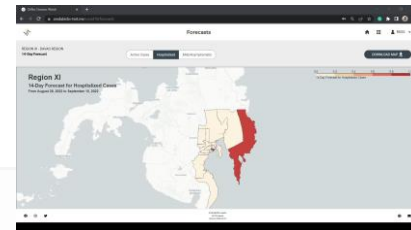
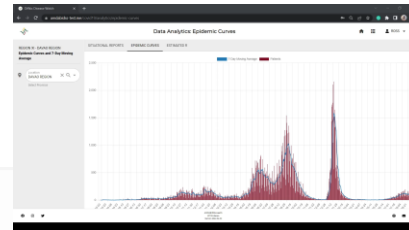
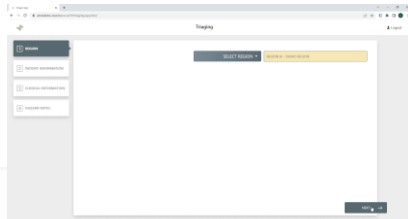
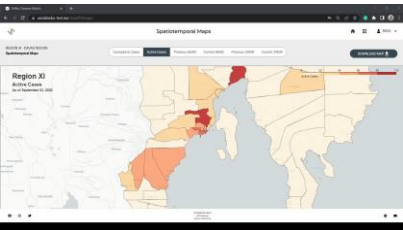


COMPUTE HAZARD RATIO

99.62 %

DIARRHEA ▾	YES
DIFFICULTY BREATHING ▾	YES
COMORBIDITY ▾	YES

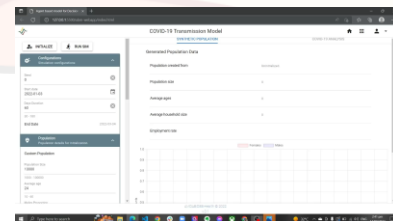
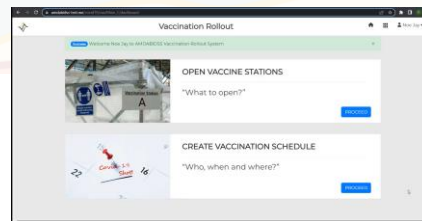
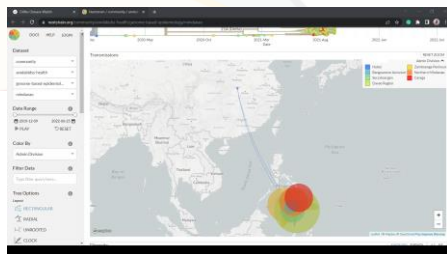




MINDANAOAN

DiWa: Disease Watch

A virtual planning tool and integrative platform
to empower decision-makers
for pandemic management in Mindanao.





Alone we can do so little; Together we can do so much.
–Helen Keller





Logrosa, G.T & Mata, M.A.E

THANK YOU FOR LISTENING!